



UNIVERSITY OF TAMPERE

This document has been downloaded from
TamPub – The Institutional Repository of University of Tampere

 *Publisher's version* <http://urn.fi/URN:NBN:fi:uta-201602111200>

Author(s): Sandell, Satu; Huovinen, Sanna; Palmio, Johanna; Raheem, Olayinka;
Lindfors, Mikaela; Zhao, Fang; Haapasalo, Hannu; Udd, Bjarne
Title: Diagnostically important muscle pathology in DNAJB6 mutated
LGMD1D
Year: 2016
Journal Title: Acta neuropathologica communications
Vol and number: 4 : 1
Journal Date: 1-10
ISSN: 2051-5960
Discipline: Biomedicine; Neurosciences
School /Other Unit: School of Medicine
Item Type: Journal Article
Language: en
DOI: <http://dx.doi.org/10.1186/s40478-016-0276-9>
URN: URN:NBN:fi:uta-201602111200
URL: <http://dx.doi.org/10.1186/s40478-016-0276-9>

All material supplied via TamPub is protected by copyright and other intellectual property rights, and duplication or sale of all part of any of the repository collections is not permitted, except that material may be duplicated by you for your research use or educational purposes in electronic or print form. You must obtain permission for any other use. Electronic or print copies may not be offered, whether for sale or otherwise to anyone who is not an authorized user.

RESEARCH

Open Access

Diagnostically important muscle pathology in DNAJB6 mutated LGMD1D

Satu Sandell^{1,2,3*}, Sanna Huovinen^{3,4}, Johanna Palmio^{2,3}, Olayinka Raheem^{3,5}, Mikaela Lindfors³, Fang Zhao⁵, Hannu Haapasalo^{3,4} and Bjarne Udd^{2,3,6,7}

Abstract

Introduction: Limb girdle muscular dystrophies are a large group of both dominantly and recessively inherited muscle diseases. LGMD1D is caused by mutated DNAJB6 and the molecular pathogenesis is mediated by defective chaperonal function leading to impaired handling of misfolded proteins which normally would be degraded. Here we aim to clarify muscle pathology of LGMD1D in order to facilitate diagnostic accuracy.

After following six Finnish LGMD1D families, we analysed 21 muscle biopsies obtained from 15 patients at different time points after the onset of symptoms. All biopsies were obtained from the lower limb muscles and processed for routine histochemistry, extensive immunohistochemistry and electron microscopy.

Results: Histopathological findings were myopathic or dystrophic combined with rimmed vacuolar pathology, and small myofibrillar aggregates. These myofibrillar inclusions contained abnormal accumulation of a number of proteins such as myotilin, α B-crystallin and desmin on immunohistochemistry, and showed extensive myofibrillar disorganization with excess of Z-disk material on ultrastructure. Later in the disease process the rimmed vacuolar pathology dominated with rare cases of pronounced larger pleomorphic myofibrillar aggregates. The rimmed vacuoles were reactive for several markers of defect autophagy such as ubiquitin, TDP-43, p62 and SMI-31.

Conclusions: Since DNAJB6 is known to interact with members of the chaperone assisted selective autophagy complex (CASA), including BAG3 – a known myofibrillar myopathy causing gene, the molecular muscle pathology is apparently mediated through impaired functions of CASA and possibly other complexes needed for the maintenance of the Z-disk and sarcomeric structures. The corresponding findings on histopathology offer clues for the diagnosis.

Keywords: LGMD1D, DNAJB6, Myopathy, Autophagy, CASA

Introduction

Limb girdle muscular dystrophy (LGMD) 1D is an autosomal dominant myopathy usually with late onset of weakness at the age of 30–60 and slow progression, although more aggressive forms can occur [1]. The disease affects mainly the lower limb muscles with a particular pattern of preferential involvement [2]. Typically the first symptom is difficulty in climbing stairs. Loss of ambulation does not occur until late senescence, except for the aggressive form of the disease [3]. Some patients may suffer from dysphagia or dysarthria. Phenotype descriptions and families from different ethnic populations have been reported [4, 5].

Myofibrillar myopathies (MFMs) are a group of myopathies that share common morphological findings but have different molecular etiologies [6, 7]. MFMs are characterized by a distinct pathological pattern of dark and hyaline cytoplasmic changes on trichrome staining corresponding to myofibrillar dissolution and accumulation of myofibrillar aggregates causing accumulated expression of several proteins, including desmin, myotilin, α B-crystallin and occasional amyloid material. On electron microscopy pathological alterations are marked in Z-disc structures leading to Z-line streaming and dispersion of dark Z-disc components [8]. A novel term: Protein aggregate and vacuolar myopathy, comprises a larger spectrum of myopathies unified by their pathological features, including the myofibrillar myopathies and

* Correspondence: satu.sandell@epshp.fi

¹Department of Neurology, Seinäjoki Central Hospital, Seinäjoki, Finland

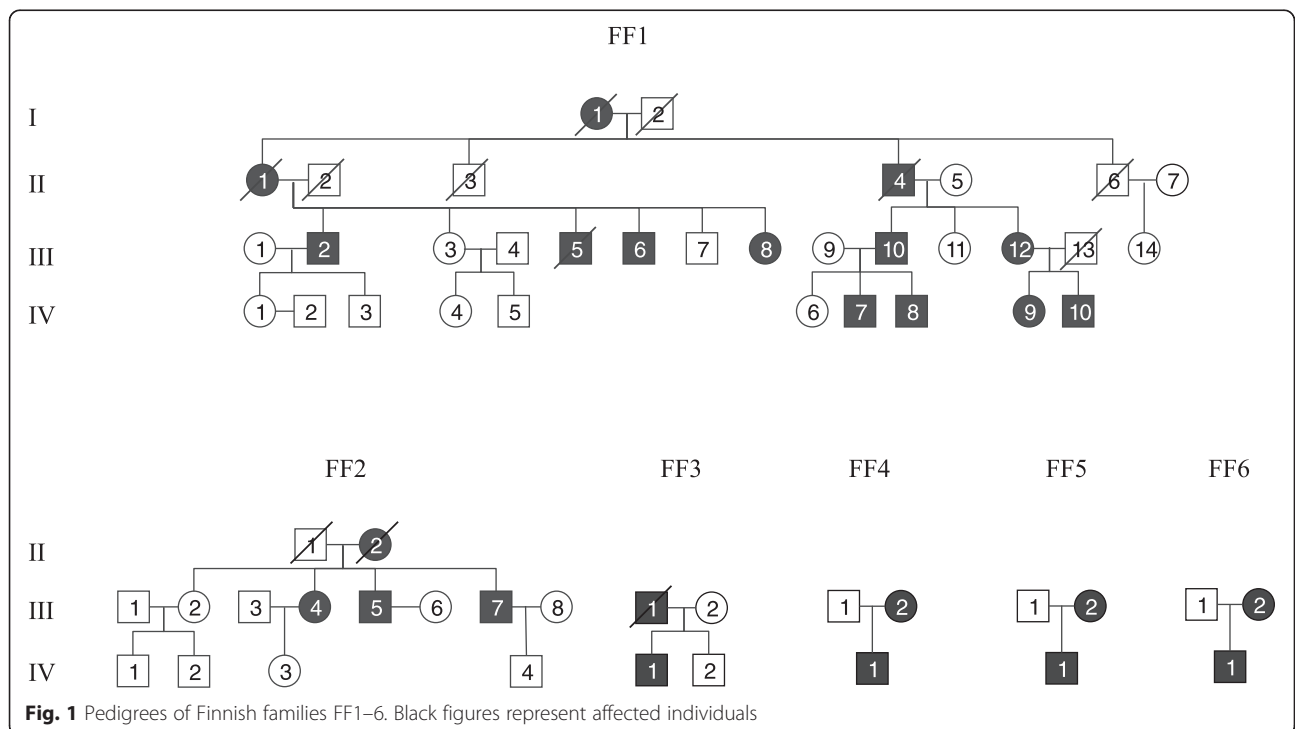
²Department of Neurology, Tampere University Hospital, Tampere, Finland

Full list of author information is available at the end of the article

Table 1 Clinical summary

Patient	Sex	Age of onset	Age at muscle biopsy	Symptoms (when examined)	CK	EMG	Other
FF1							
III-6	M	50	74	Il severe, ul mild	400	na	
III-8	F	60	69	Il mild, ul mild	187	myopathic	
III-12	F	35	47, 63, 72	Il severe, ul moderate	338	myopathic	
IV-7	M	34	46, 48	Il moderate, ul moderate	789	myopathic	dysphagia
V-8	M	30	38	Il mild, no ul	820	myopathic	
IV-9	F	30	38, 42	Il moderate, ul mild	375	myopathic	
IV-10	M	20	44, 49	Il moderate, ul mild	175	myopathic	
FF2							
III-4	F	50	63	Il mild, no ul	520	myopathic	
FF3							
IV-1	M	38	49, 51	Il, severe, ul moderate	600	myopathic	dysarthria, Il pain
FF4							
III-2	F	40	62	Il mild, slow course	"normal"	myopathic	
IV-1	M	28	31	Il mild, ul mild	1900	myopathic	
FF5							
IV-1	M	30	47	Il severe, ul mild	"normal"	myopathic	dysphagia
FF6							
IV-1	M	40	51	Il, severe, ul moderate	800	myopathic	

Il, lower limb; ul, upper limb. Clinical findings at the time of clinical examination, within one year of muscle biopsy sample time (or latest biopsy, if many). Creatine kinase (CK) normal upper limits 400 for men, 210 for women



various rimmed vacuolar myopathies with protein aggregates or inclusions [9].

We have previously reported preliminary data on muscle biopsy findings in patients with p.F93L mutation in *DNAJB6* [1, 10] and Sato et al. have reported biopsy findings in five LGMD1D patients [11] with the p.F93I mutation. In our current study of a large biopsy material of LGMD1D patients we show consistent pathological changes in the routine histopathology that can be used to direct the molecular genetic confirmation of the final diagnosis. Moreover, we show that the abnormal protein accumulations follow a sequential evolution from the early stage of small central myofibrillar lesions to the later stage of widespread myofibrillar disintegration with and autophagic rimmed vacuolar pathology in atrophic degenerating fibers.

Materials and methods

15 patients from six unrelated Finnish families were studied, four of them had two and one patient three biopsies, with an age range from 47 to 78 years. Patient data and their clinical findings are presented in Table 1. Clinical examination data was available from 13 patients. All patients were heterozygous for the *DNAJB6* mutation p. F93L. Pedigrees of the families FF1–6 are presented in Fig. 1.

All together 21 muscle biopsy samples were collected from four anatomically different muscles (vastus lateralis (VL), gluteus (G), soleus (S) and gastrocnemius medialis (GM)). Fresh-frozen 10 μ m cryostat sections of muscle tissue were stained with routine histochemical techniques [12, 13]. Frozen sections of 6 μ m thickness were cut and mounted on superFrost plus slides. Immunohistochemical staining was performed with the Ventana BechMark immunoautomate (Roche Tissue Diagnostics, Inc. AZ 85755) with antibodies and dilutions detailed in Table 2. The immunoreactions were visualized with a Ventana peroxidase based detection kit (UltraView Universal DAB detection system kit, Roche Tissue Diagnostics, Inc. AZ 85755). Stained sections were dehydrated using a gradient of ethanol and xylene and mounted with a solvent based mounting media.

Antibodies applied for immunohistochemical stainings are detailed in Table 2.

Ultrastructural studies were performed on ten patients. Muscle specimens were processed for semithin and ultrathin sections according to standard methods [14] and examined with JEOL 1400 transmission electron microscope (JEOL, Japan). Electron micrographs were taken by Olympus-SIS Morada digital camera (Olympus Soft Imaging Solutions, Munster, Germany).

Results

Clinical summary of the patients is presented in Table 1.

On light microscopy general myopathic or dystrophic features of variable severity depending on the stage of

Table 2 Antibodies used in immunohistochemical stainings, their dilutions and supplier

Antibody	Dilution	Supplier
Myotilin	1:50	Leica Biosystems, Novocastra
Alpha B crystallin	1:10	Leica Biosystems, Novocastra
Desmin	1:800	Biogenex
Dystrophin 2 (c-terminus)	1:100	Leica Biosystems, Novocastra
SMI-31	1:1000	Biosite
SMI-310	1:400	Abcam
TDP-43	1:175	Proteintech Europe
P62 (SQSTM1)	1:100	Santa Cruz Biotechnology
Ubiquitin	1:300	Dako
LAMP2	1:50	Southern Biotech
LC3	1:50	Novus Biologicals
LC3B	1:50	Cell Signaling technology
VCP	1:600	Thermo Scientific
FHL-1	1:200	Lifespan biosciences
DNAJB6	1:100	Abnova
HSPB8	1:200	Abcam
BAG3	1:800	Proteintech Europe
Proteasome	1:30	Atlas antibodies
Beta-amyloid	1:30	Leica Biosystems, Novocastra Life
Amyloid precursor protein	1:50	Biosciences
Wip1	1:50	Sigma
Dystrophin 1 (rod domain)	1:40	Leica Biosystems, Novocastra
Dystrophin 2 (c-terminus)	1:100	Leica Biosystems, Novocastra
Dystrophin 3 (N-terminus)	1:20	Leica Biosystems, Novocastra
Dysferlin	1:200	Leica Biosystems, Novocastra
α -Sarcoglycan	1:100	Leica Biosystems, Novocastra
β -Sarcoglycan	1:100	Leica Biosystems, Novocastra
γ -Sarcoglycan	1:15	Leica Biosystems, Novocastra
α -Dystroglycan	1:200	Millipore, Upstate
Caveolin 3	1:150	Santa Cruz Biotechnology
Merosin Laminin Alpha 2 Chain	1:500	USBiological
Utrophin	1:20	Leica Biosystems, Novocastra
Spectrin	1:50	Leica Biosystems, Novocastra

the disease were observed in all cases: fibrosis and fatty replacement of the muscle tissue, fiber size variation with atrophic and occasional hypertrophic fibers and central nucleation (Fig. 2a, b). There were occasional split fibers, necrotic and regenerating fibers, as well as focal endomysial mononuclear cells (Table 3). A uniform microscopic finding was the presence of distinct areas of myofibrillar abnormalities. In addition, rimmed vacuolar pathology was found in all cases. In the early stage pathology the myofibrillar lesions were characteristically

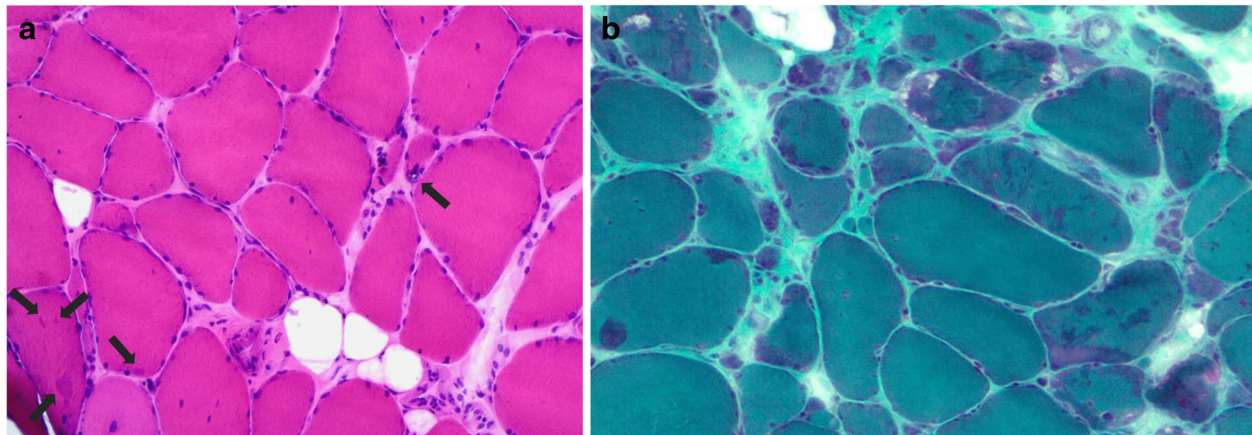


Fig. 2 **a** On H&E staining on gastrocnemius lateralis muscle of a 51-year-old male (FF3, IV-1) mild endomysial fibrosis as well as fiber size variation, internal nuclei, one atrophic rimmed vacuolated fiber (arrow in the middle) and small centrally located myofibrillar aggregates mainly in non-atrophic fibers (arrows in left corner) are evident. **b** In modified trichrome staining of the same muscle the aggregates appear as darker stained areas

small in size and often in a few fibers only, making them difficult to distinguish. On transverse sections they appeared as rounded dense aggregates on H&E staining and were often more easily identified on the modified trichrome stain as dark green areas. In these regions oxidative enzyme stainings were often weak, however without very distinct core or rubbed-out pathology. On longitudinal sections the myofibrillar lesions were wavy in shape extending over several sarcomeres in length. They occurred mainly in fibers with normal caliber and were usually not located in the periphery of the fibers. Both fiber types were equally involved. In the late stage of the disease the rimmed vacuolar pathology was usually very prominent. In a single biopsy a large number of fibers containing pleomorphic hyaline myofibrillar masses reminiscent of a classic myofibrillar myopathy were seen (Fig. 3a). These pleomorphic regions were occasionally congophilic on Congo red staining appearing bright red visualized through Texas red fluorescent filters (Fig. 3b). Increased expression of beta-amyloid precursor protein (APP) was also observed in some of these fiber regions associated with the hyaline deposits.

On immunohistochemistry moderate or strong expression of several proteins including myotilin, desmin, alphaB-crystallin, proteasome and SMI310 were shown in the myofibrillar lesions with aggregates (Fig. 3a, c, d) (Table 4), and dystrophin showed ectopic expression of mild or moderate intensity in the same regions (Fig. 3e). The extent of the aggregate pathology was variable depending on the stage of the disease. The protein accumulations also contained all tested CASA complex proteins such as BAG3, heat shock protein (HSP) B8, and DNAJB6 itself (Fig. 3f, g, h). The rimmed vacuoles showed material with reactivity for several markers of defect degradation and autophagic

processing such as ubiquitin, valosin-containing protein (VCP), TDP-43, p62 and SMI-31 (Table 4) (Fig. 4a, b, c, d, e). These rimmed vacuolar regions of local degeneration were filled with autophagosomes as shown by LC3 reactivity, whereas components of mature lysosomes expressing LAMP2 were less abundant or absent in the rimmed vacuolar spaces (Fig. 4f, g). Antibodies applied for the sarcolemmal proteins showed normal findings in the sarcolemma (Table 2).

On electron microscopy the myofibrillar lesions showed severe structural sarcomere disarrangement associated with prominent excess and dispersion of disintegrated Z-disk material (Fig. 5). Other frequent findings included autophagic regions with vesicles, myeloid figures and debris material, and fibers with multiple small vacuoles appearing to arise from the sarcoplasmic reticulum. A rare finding was the presence of occasional tubulofilamentous intranuclear or cytoplasmic inclusions in two cases.

Discussion and conclusions

The muscle pathology in our study of *DNAJB6* mutated *LGMD1D* shows distinct findings that should provide clues for a correct diagnostic approach even in a sporadic patient without known family history. On light microscopy the most common finding is the presence of early stage myofibrillar disintegration with small myofibrillar aggregates and rimmed vacuolated fibers. On immunohistochemistry many proteins are found in the aggregates, and the rimmed vacuoles are reactive for several proteins associated with autophagy. The light microscopy findings are in general similar to MFMs. However, the myofibrillar aggregates are commonly distributed in scattered fibers and are smaller than in a

Table 3 Myopathological findings

	Muscle	Neurogenic fiber type grouping	Fiber type predominance	Fiber size variation	Fibrosis and fatty degeneration	Increase of internal nuclei	Fiber splitting	Necrosis	Lymphocyte infiltrates	Fiber regeneration	Rimmed vacuoles	Cytoplasmic myofibrillar inclusions	Core-like lesions	Rubbed-out fibers	Moth-eaten fibers	Lobulated fibers	Ragged red fibers	COX- fibers	
FF1																			
III-6	VL	-	+		++	+	+	-	-	-	+	+	+	-	++	+	-	-	
III-8	S	(+)	-	++	++	++	++		-	-	+	++	++	-	-	-	-	-	
III-12	VL	-	+	(+)	+	-	-	-	-	+	(+)	+	-	-	-		-	-	
	GLU	-	+	(+)	+	-	+	-	+	+	+	++	+	-	-		-	-	
	VL	-		(+)	+	+	-	+	+	+	+	++	-	-	+	-	-	-	
IV-7	GM	-	-	+	+	+	+	+	+	-	+	+	+++	-	-	-	-	-	
	GM	-	-	++	++	++	++	-	+	+	++	++	+	-	+	-	-	-	
IV-8	GM	-	-	+	-	+	+	+	+	+	+	+	+	-	+	+	-	-	
IV-9	VL	-	+	+	-	+	+	+	+	+	+	+	-	-	+	-	-	-	
	VL	+	-	++	+	+	-	-	-	-	+	+	-	-	-	(+)	-	(+)	
IV-10	VL	-	-	-	-	-	-	-	-	-	+	(+)	+	-	-	-	-	-	
	VL	-	+	+	-	+	-	-	-	-	+	+	+	-	-	-	-	-	
FF2																			
III-4	VL	-		+	-	+	-	-	-	-	+	+	-	-	-	-	-	(+)	
III-5	VL	-		+	-	+	-	-	-	-	+	++	-	-	-	-	-	(+)	
III-7	VL	-		++	++	+++	+	+	+	+	+	+	+	-	+	-	-	-	
FF3																			
IV-1	VL	+	-	++	+	+++	+	+	+	-	+	++	+	-	+	-	-	-	
	GL	-	-	++	+	++	+	++	+	-	+	++	++	-	+	+	-	(+)	
FF4																			
III-2	VL	-	+	++	++	++	+	+	-	-	+	+	+	-	+	-	-	-	
IV-1	VL	-	-	(+)	-	+	-	+	-	+	+	+	++	-	+	-	-	-	
FF5																			
IV-1	VL	-	+	++	++	++	+	+	+	-	++	+	+	-	-	+++	-	-	
FF6																			
IV-1	VL	+	-	++	++	+	-	-	-	-	+	+	-	-	+	+	-	(+)	

Internal nuclei amount assessed as: -, absent; (+), existent in < 1 %; +, existent up to 5 %; ++, existent in 6–20 %; +++, existent in over 20 % of the fibers. Fibrosis and fatty degeneration: -, no fibrosis, fatty degeneration; +, mildly increased; ++, moderately increased

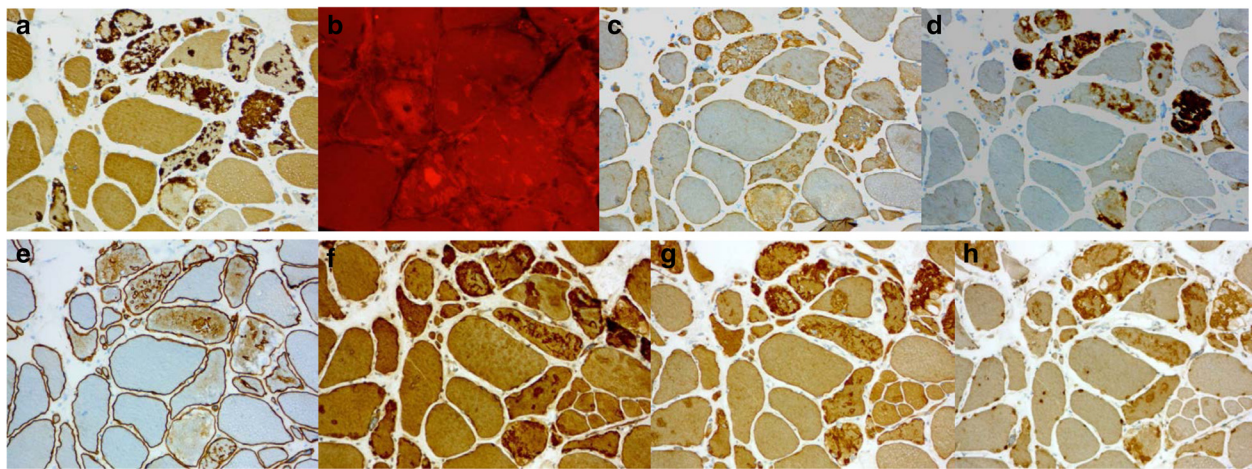


Fig. 3 a, c, d. Vastus lateralis muscle of a 72-year-old female (FF1, III-12): moderate or strong expression of proteins myotilin (**a**), desmin (**c**) and alphaB-crystallin (**d**) in the myofibrillar lesions with aggregates on immunohistochemistry. **b.** Congo red staining viewed through Texas-red filters shows numerous eosinophilic fluorescent deposits in muscle fibers. **e.** Dystrophin-2 showed ectopic expression of mild or moderate intensity in the same regions. **f, g, h.** The protein accumulations showing CASA complex proteins BAG3 (**f**), HSPB8 (**g**), and DNAJB6 (**h**)

typical MFM. Only in one biopsy large and pleomorphic aggregates in groups of fibers unevenly distributed across the fascicles more characteristic of a typical MFM were seen. In addition, rubbed-out fibers commonly found in MFMs such as desminopathies and alphaB-crystallinopathies are not a common feature in LGMD1D.

Secondary inflammatory changes that often may occur in genetic myopathies were observed in approximately half of the *DNAJB6* mutant biopsies. However, the endomysial inflammatory cells were few in number without larger infiltrates and no invasion in non-necrotic fibers was observed. In addition, there was no significant expression of MHC HLA Class I, thus clearly preventing any confusion with sporadic inclusion body myositis (s-IBM) despite the rimmed vacuolation. In addition, no significant numbers of cytochrome oxidase-negative muscle fibers or ragged red fibers were present. Clinically, the involvement of hamstrings was always more severe than the quadriceps and without the finger flexor weakness as with s-IBM.

The ultrastructural findings in myofibrillar myopathies may show some differences in the genetically different myopathies [15]. Compared to myotilinopathy the changes in LGMD1D show less frequently tubulofilamentous bundles and no basement membrane thickening, described in myotilinopathy [15]. In zaspopathy filamentous accumulations in bundles are frequent and intrasarcoplasmic rods common, but were not observed in LGMD1D. Desminopathies characteristically show cytoplasmic electron-dense reticular granulofilamentous accumulations, in addition to areas with sarcomere

disorganization and Z-disk alterations. Areas of amyloid-like material often adjacent to granulofilamentous inclusions or in vacuolated fibers can also be found in desminopathy, as well as other myofibrillar myopathies [8, 16]. Reticular desmin aggregates or amyloid deposits were not found ultrastructurally in the studied LGMD1D biopsies. The large complexes of electron-dense granulofilamentous accumulations and sandwich formations in desminopathy and α B-crystallinopathy and filamentous bundles and extensive Z-disk alterations in myotilinopathy and zaspopathy were not observed ultrastructurally in LGMD1D.

The autophagic degenerative component of the pathology in LGMD1D with the basic features of rimmed vacuoles on light microscopy and disorganized myofibrillar structures, Z-line dispersion, and dilatation of sarcoplasmic reticulum into vacuolar formations on ultrastructure are not particularly different compared to the similar pathology of the other myofibrillar myopathies or s-IBM. However, eosinophilic inclusions in the rimmed vacuoles that occasionally may be observed in s-IBM were rare in the LGMD1D samples.

LGMD1D is caused by mutations in *DNAJB6* gene [10]. *DNAJB6* belongs to the evolutionarily conserved DNAJ / HSP40 family of proteins, which regulate molecular chaperone activity by stimulating ATPase activity [17]. *DNAJB6* is expressed in many tissues [18] with its highest expression in brain. Its association to skeletal muscle disease was shown in 2012 [10]. Our previous studies suggested *DNAJB6* involvement in the CASA pathway, a major mechanism in protein re-cycling and turnover for the maintenance of Z-disc sarcomeric

Table 4 Immunohistochemical findings

	Muscle	Myotilin	α -BC	Desmin	DYS-2	SMI-31	TDP-43	p62	Ubiquitin	LAMP-2	VCP	FHL1	Membr prot	LC3	HSPB8
FF1															
III-6	VL			+				-	-						
III-8	S	++	++	+	++		++	++			+				
III-12	VL														
	GLU			+	+										
IV-7	VL	+	+	+	+				-		-		-		
	GM	++	++	+	++				++						
IV-8	GM	++	++	++	++	++	++	++	++	-	++	-			++
	GM	++	++	++	+		++	++	++	-	-	-			++
IV-9	VL	-	+	+	+								-		
	VL	+	+	+	-		++	++			-				
IV-10	VL	++	++	+	+	-		+	+		-		-		
	VL	++	++	+	+	-	+	+	++	-	-				+
FF2															
III-4	VL			-		-									
III-5	VL			-		-			-						
III-7	VL			+	+	+			+						
FF3															
IV-1	VL				-				++				-		
	GL	++	++	++	+				++				-		
FF4															
III-2	VL	++	++	++	++	++	++	++	++	-	++	-		++	+
IV-1	VL			+	++				++						
FF5															
IV-1	VL	++	++	+	+	++	++	++	-	-	-	-			+
FF6															
IV-1	VL	+	-	+	-	+/-	+/-	+	+	-	+	-		+	

Table 4 Immunohistochemical findings (Continued)

	DNAJB6	Ubiquilin2	Cathepsin B	Filamin C	BAG3	α-actinin	Teletonin	Actin	SERCA	α-tubulin	SMI310	Proteasome	β-amyloid	APP	WIP1
FF1											+		-	-	-
		++	-	-	++	+		-			++	+	-	-	-
		-	-	-	++	+		-		-	++	+	-	-	-
					++	+	+	-	-	-		+	-	-	-
			-	-		-	-	+	+	-	+		-	-	-
FF2															
FF3															
FF4	+	++	+	-	++							+	-	+	
FF5	+				+						++		-	-	-
FF6	+	+/-	-												

-, normal, no immunoreactivity; +, present immunoreactivity; ++, prominent immunoreactivity

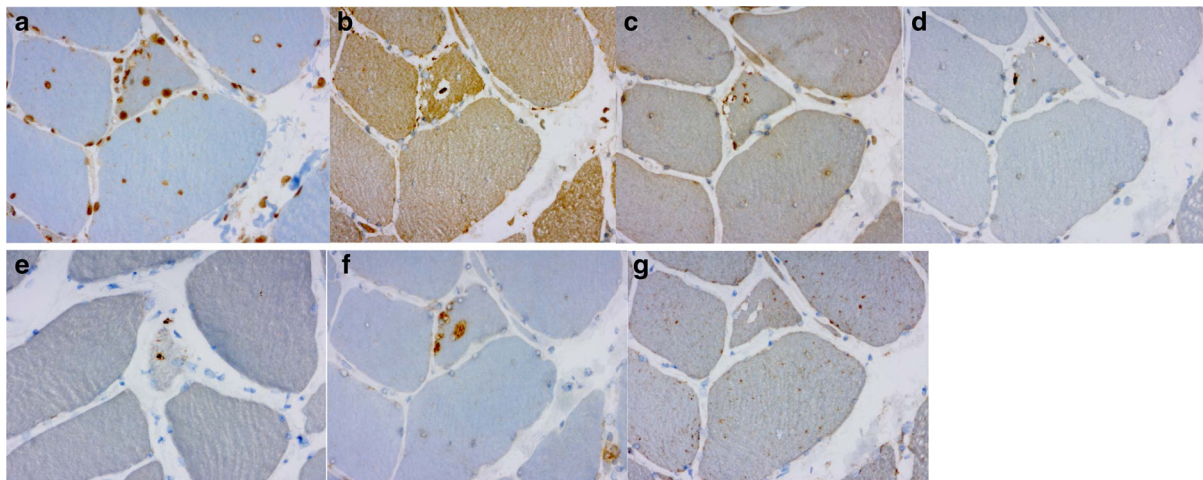


Fig. 4 a, b, c, d, e. The same patient and muscle as in Fig. 3. The rimmed vacuoles showed material with reactivity for several markers of defect degradation and autophagic processing such as ubiquitin (a), VCP (b), TDP-43 (c), p62 (d) and SMI-31 (e). **f, g.** The rimmed vacuolar regions of local degeneration filled with autophagosomes, shown by LC3 (f) reactivity, components of mature lysosomes expressing LAMP2 (g)

integrity. We have in our previous work found that DNAJB6 interacts with several members of CASA complex: BAG3, HSPA8, STUB1 and HSPB8 [10]. In this study we also demonstrate in patient muscle biopsies the involvement of these proteins, thus confirming the results shown with the F93I mutation [11]. The dominant toxic effect of the mutant F93L decreases the anti-aggregational effect of DNAJB6 and makes the whole chaperonal complex in which DNAJB6 is involved less effective, leading to protein aggregations and secondary autophagic abnormalities with rimmed vacuolar pathology. Because of the defective DNAJB6 function Z-disc components are disturbed and accumulate first (myotilin, desmin, α B-crystallin, BAG3) followed by

defective autophagy which can be seen as staining of rimmed vacuolar markers LC3, VCP, TDP-43, SMI-31 and p62 increasing with disease duration. These findings, when observed in the clinical diagnostic praxis, in particular the early changes of smaller myofibrillar aggregates in normal sized fibers should direct the further diagnostic efforts towards *DNAJB6* and *LGMD1D* disease.

Exceptionally, *LGMD1B* has been reported to cause myofibrillar changes similar to *LGMD1D*, however without rimmed vacuolar pathology [19].

Histopathology of *LGMD1D* is different from the other more prevalent autosomal dominant limb-girdle muscular dystrophies; markedly different from the usually nonspecific pathology in *LGMD1B* and *LGMD1C* and also distinct from the more closely related *LGMD1A* myotilinopathy.

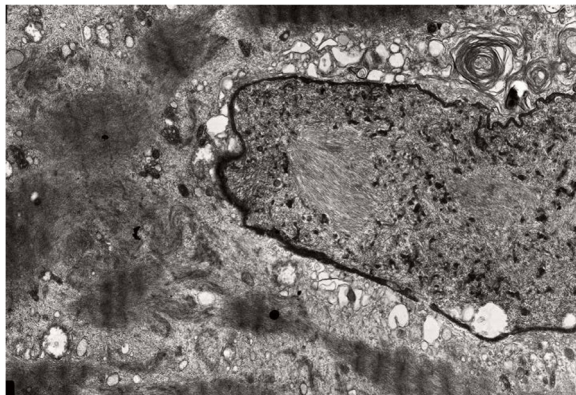


Fig. 5 Electron micrograph from vastus lateralis muscle biopsy of a 69-year-old female (FF1, III-8) shows loss of the normal sarcomeric structure with excess dispersed wavy Z-disk material

Ethics approval and consent to participate

Authors take full responsibility of the data, the analyses and the interpretation. All patients have given their informed consent prior to their inclusion in the study. All investigations have been performed in accordance of with Declaration of Helsinki and its amendments. This study has been approved by the ethical committee of Tampere University Hospital. The authors declare that they have no conflicts of interest.

Abbreviations

BAG3: Bcl-2 associated anthanogene 3; DNAJB6: Dnaj homolog subfamily B member 6; FHL-1: Four and a half LIM domains protein 1; HSBP8: Heat shock 22 kD protein 8; LC3: Microtubule-associated protein light chain 3; LC3B: Microtubule-associated protein light chain 3, isoform B; P62/SQSTM1: Sequestosome 1; SMI-31: Phosphorylated neurofilament;

SMI-310: Neurofilament; TDP-43: TAR DNA binding protein 43; VCP: Valosin containing protein; Wip1: Wildtype p53-induced phosphatase 1.

Competing interests

The authors declare that they have no competing interests in directly link with this work.

Authors' contributions

SS, SH and BU wrote the paper and all authors approved and commented it. SS, JP and BU recruited the patients and took muscle biopsies. SH and HH investigated the muscle samples by microscope. SS, JP and BU co-investigated the samples. OR and ML performed the immunohistochemical stainings. SH and FZ performed electromicroscopy of the muscle samples.

Author details

¹Department of Neurology, Seinäjoki Central Hospital, Seinäjoki, Finland.

²Department of Neurology, Tampere University Hospital, Tampere, Finland.

³Neuromuscular Research Center, Tampere University Hospital, University of Tampere, Tampere, Finland. ⁴Department of Pathology, Fimlab Laboratories, Tampere University Hospital, University of Tampere, Tampere, Finland.

⁵Department of Pathology and Genetics, HUSLAB Laboratories, Helsinki University Hospital, University of Helsinki, Helsinki, Finland. ⁶Department of Medical Genetics, Folkhälsan Institute of Genetics, University of Helsinki, Helsinki, Finland. ⁷Department of Neurology, Vaasa Central Hospital, Vaasa, Finland.

Received: 15 January 2016 Accepted: 15 January 2016

Published online: 05 February 2016

References

- Sandell S, Huovinen S, Sarparanta J, Luque H, Raheem O, Haapasalo H, et al. The enigma of 7q36 linked autosomal dominant limb girdle muscular dystrophy. *J Neurol Neurosurg Psychiatry*. 2010;81:834–9.
- Sandell SM, Mahjneh I, Palmio J, Tasca G, Ricci E, Udd BA. 'Pathognomonic' muscle imaging findings in DNAJB6 mutated LGMD1D. *Eur J Neurol*. 2013; 20:1553–9.
- Palmio J, Jonson PH, Evilä A, Auranen M, Straub V, Bushby K, et al. Novel mutations in DNAJB6 gene cause a very severe early-onset limb-girdle muscular dystrophy 1D disease. *Neuromuscul Disord*. 2015;25:835–42.
- Harms MB, Sommerville RB, Allred P, Bell S, Ma D, Cooper P, et al. Exome sequencing reveals DNAJB6 mutations in dominantly-inherited myopathy. *Ann Neurol*. 2012;71:407–16.
- Suarez-Cedeno G, Winder T, Milone M. DNAJB6 myopathy: a vacuolar myopathy with childhood onset. *Muscle Nerve*. 2014;49:607–10.
- De Bleeker JL, Engel AG, Ertl BB. Myofibrillar myopathy with abnormal foci of desmin positivity. II. Immunocytochemical analysis reveals accumulation of multiple other proteins. *J Neuropathol Exp Neurol*. 1996;55:563–77.
- Nakano S, Engel AG, Waclawik AJ, Emslie-Smith AM, Busis NA. Myofibrillar myopathy with abnormal foci of desmin positivity. I. Light and electron microscopy analysis of 10 cases. *J Neuropathol Exp Neurol*. 1996;55:549–62.
- Selcen D, Ohno K, Engel AG. Myofibrillar myopathy: clinical, morphological and genetic studies in 63 patients. *Brain*. 2004;127:439–51.
- Weihl C. Role of autophagy in protein aggregate and vacuolar myopathies. *Neuromusc Disord*. 2014;24:791.
- Sarparanta J, Jonson PH, Golzio C, Sandell S, Luque H, Screen M, et al. Mutations affecting the cytoplasmic functions of the co-chaperone DNAJB6 cause limb-girdle muscular dystrophy. *Nat Genet*. 2012;44:450–2.
- Sato T, Hayashi YK, Oya Y, Kondo T, Sugie K, Kaneda D, et al. DNAJB6 myopathy in an Asian cohort and cytoplasmic/nuclear inclusions. *Neuromuscul Disord*. 2013;23:269–76.
- Dubowitz V, Sewry C. *Muscle biopsy: a practical approach*. 3rd ed. London: Saunders, Elsevier; 2006.
- Raheem O, Huovinen S, Suominen T, Haapasalo H, Udd B. Novel myosin heavy chain immunohistochemical double staining developed for the routine diagnostic separation of I, IIA and IIX fibers. *Acta Neuropathol*. 2010; 119:495–500.
- Mascorro J, Bozzola J. Processing biological tissue for ultrastructural study. Electron microscopy methods and protocols. In: Kuo J, editor. *Methods in Molecular Biology*, vol. 369. New York: Humana Press; 2007. p. 19–34.
- Claeys KG, Fardeau M, Schröder R, Suominen T, Tolksdorf K, Behin A, et al. Electron microscopy in myofibrillar myopathies reveals clues to the mutated gene. *Neuromuscul Disord*. 2008;18:656–66.
- Goebel HH, Fardeau M, Olive M, Schröder R. 156th ENMC International Workshop: desmin and protein aggregate myopathies, 9–11 November 2007, Naarden, The Netherlands. *Neuromuscul Disord*. 2008;18:583–92.
- Ohtsuka K, Hata M. Mammalian HSP40/DNAJ homologs: cloning of novel cDNAs and a proposal for their classification and nomenclature. *Cell Stress Chaperones*. 2000;5:98–112.
- Seki N, Hattori A, Hayashi A, Kozuma S, Miyajima N, Saito T. Cloning, tissue expression, and chromosomal assignment of human MRJ gene for a member of the DNAJ protein family. *J Hum Genet*. 1999;44:185–9.
- D'Amico A, Benedetti S, Petrini S, Sambuughin N, Boldrini R, Menditto I, et al. Major myofibrillar changes in early onset myopathy due to de novo heterozygous missense mutation in lamin A/C gene. *Neuromuscul Disord*. 2005;15:847–50.

Submit your next manuscript to BioMed Central and we will help you at every step:

- We accept pre-submission inquiries
- Our selector tool helps you to find the most relevant journal
- We provide round the clock customer support
- Convenient online submission
- Thorough peer review
- Inclusion in PubMed and all major indexing services
- Maximum visibility for your research

Submit your manuscript at
www.biomedcentral.com/submit

