



UNIVERSITY OF TAMPERE

This document has been downloaded from
TamPub – The Institutional Repository of University of Tampere

 *Publisher's version*

The permanent address of the publication is <http://urn.fi/URN:NBN:fi:uta-201402241171>

Author(s): Hällberg, Ville; Palomäki, Ari; Lahtela, Jorma; Voutilainen, Seppo;
Tarkka, Matti; Kataja, Matti
Title: Associations of metabolic syndrome and diabetes mellitus with 16-
year survival after CABG
Year: 2014
Journal Title: Cardiovascular Diabetology
Vol and
number: 13 : 25
Pages: 1-8
ISSN: 1475-2840
Discipline: Internal medicine
School /Other
Unit: School of Medicine
Item Type: Journal Article
Language: en
DOI: <http://dx.doi.org/10.1186/1475-2840-13-25>
URN: URN:NBN:fi:uta-201402241171
URL: <http://www.cardiab.com/content/13/1/25>

All material supplied via TamPub is protected by copyright and other intellectual property rights, and duplication or sale of all part of any of the repository collections is not permitted, except that material may be duplicated by you for your research use or educational purposes in electronic or print form. You must obtain permission for any other use. Electronic or print copies may not be offered, whether for sale or otherwise to anyone who is not an authorized user.

ORIGINAL INVESTIGATION

Open Access

Associations of metabolic syndrome and diabetes mellitus with 16-year survival after CABG

Ville Hällberg^{1,2*}, Ari Palomäki¹, Jorma Lahtela^{2,3}, Seppo Voutilainen⁴, Matti Tarkka^{2,3}, Matti Kataja⁵
for The Study Group (W-CABG)

Abstract

Background: The associations of metabolic syndrome (MetS) or diabetes mellitus (DM) on long-term survival after coronary artery bypass grafting (CABG) have not been extensively evaluated. The aim of the present study was to assess the impact of MetS and DM on the 16-year survival after CABG.

Methods: Diabetic and metabolic status together with relevant cardiovascular data was established in 910 CABG patients operated in 1993-94. They were divided in three groups as follows: neither DM nor MetS (375 patients), MetS alone (279 patients) and DM with or without MetS (256 patients). The 16-year follow-up of patient survival was carried out using national health databases. The relative survival rates were analyzed using the Life Table method comparing the observed survival rates of three patient groups to the rates based on age-, sex- and time-specific life tables for the whole population in Finland. To study the independent significance of MetS and DM for clinical outcome, multivariate analysis was made using an optimizing stepwise procedure based on the Bayesian approach.

Results: Bayesian multivariate analysis revealed together six variables to predict clinical outcome (2 months to 16 years) in relation to the national background population, i.e. age, diabetes, left ventricular ejection fraction, BMI, perfusion time during the CABG and peripheral arterial disease. Our principal finding was that after postoperative period the 16-year prognosis of patients with neither DM nor MetS was better than that of the age-, sex- and time-matched background population (relative survival against background population 1.037, $p < 0.0001$). The overall survival of MetS patients resembled that of the matched background population (relative survival 0.998, NS). DM was associated with significantly increased mortality (relative survival 0.86, $p < 0.0001$). Additionally, mortality was even higher in patients receiving insulin treatment than in those without. Excess death rate of DM patients was predominantly caused by cardiovascular causes.

Conclusion: In this long-term follow-up study patient groups without diabetes had at least equal 16 years' survival after CABG than their matched background populations. Survival of DM patients started to deteriorate already few years after the operation.

Keywords: Coronary artery bypass grafting, Diabetes mellitus, Metabolic syndrome, Follow-up, Mortality

* Correspondence: ville.hallberg@khshp.fi

¹Kanta-Häme Central Hospital, Hämeenlinna, Finland

²University of Tampere, Medical School, Tampere, Finland

Full list of author information is available at the end of the article

Introduction

Metabolic syndrome (MetS), was first officially defined by the World Health Organization (WHO) and the National Cholesterol Education Program (NCEP) more than ten years ago [1,2]. Since that time its epidemiology has been widely evaluated [3,4]. MetS can be used as a tool to characterize patients at added risk [5-7]. Several studies have suggested that the risks of premature death and cardiovascular disease or diabetes are higher among subjects with MetS compared to those without. However, follow-up studies on long-term survival after coronary artery bypass grafting (CABG) have yielded controversial results with regard to the impact of MetS [8,9].

Diabetes (DM) is a prominent cardiovascular risk factor [10,11]. There is a considerable body of evidence on poor early outcome and higher in-hospital morbidity in diabetics compared with non-diabetic patients after CABG [12,13]. The association of diabetes on long-term survival after CABG has not been extensively evaluated. The few reports published comparing the type of treatment of diabetes to the long-term prognosis after CABG have come to conflicting conclusions [14,15].

Our aim was to evaluate the assumed detrimental impact of metabolic syndrome and diabetes mellitus on long-term prognosis after CABG, focusing on survival after the first two postoperative months.

Methods

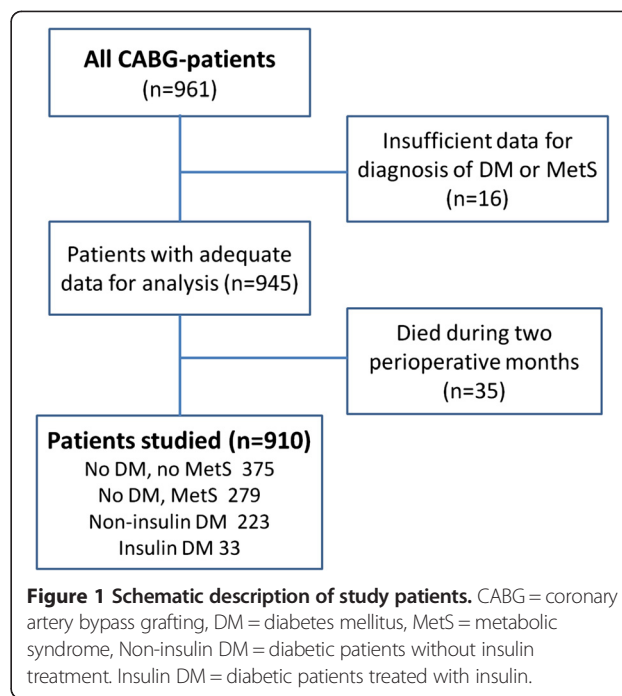
Study population

The population of the Working after CABG (W-CABG) study has been described elsewhere [16]. Briefly, CABG was done on 961 patients in Tampere University Hospital during a period of 18 months in 1993-94. Data on MetS and DM were available on 945 operated patients and 910 patients survived two months after CABG (Figure 1). These patients formed the study cohort and were followed for 16 years.

We analyzed the survival of CABG patients in three groups as follows: neither DM nor MetS (DM-/MetS-), MetS alone (DM-/MetS+) and DM with or without MetS (DM+). We combined all DM patients in the same group regardless of their status concerning MetS, in primary analyses of diabetic patients the presence of MetS did not affect survival.

Data collection and clinical definitions

The background of the patients and perioperative data were collected from the medical records in Tampere University Hospital and the secondary hospitals involved in the postoperative care. A survival analysis was made after the closing day, June 30, 2010, based on data obtained from the Statistical Office of Finland. The results of the full completed 16-year follow-up are given.



Diagnoses of hypertension, peripheral vascular disease, previous myocardial infarction, and previous transient ischemic attack (TIA) or stroke were established from patient records. Renal dysfunction was defined as a glomerular filtration rate less than 60 ml/min/1.73 m² calculated with the CKD-EPI equation [17]. Patients were defined as hypercholesterolemic if they had total cholesterol ≥ 5 mmol/l (200 mg/dl) (NCEP ATP III) or were on lipid-lowering drug therapy. Smoking habits were based on a questionnaire completed 21 months postoperatively [16].

Classification of MetS was made according to the NCEP/ATP III definition with the exception that body mass index (BMI) (kg/m²) was used as a measure of obesity. During the 1990s waist circumference was not commonly measured [9,18]. Modified MetS was defined as the presence of three or more of the following risk factors: BMI > 30 kg/m² for men and > 25 kg/m² for women, TGL concentration ≥ 150 mg/dL (1.7 mmol/l), HDL-C < 40 mg/dL (1.03 mmol/l) for men and < 50 mg/dL (1.3 mmol/l) for women and systolic blood pressure ≥ 130 mmHg or diastolic blood pressure ≥ 85 mmHg or on antihypertensive medication. Elevated blood glucose was defined as fasting blood glucose ≥ 100 mg/dl (5.6 mmol/l) [1,2]. For the diagnosis of diabetes the 1998 WHO criteria were used, defining fasting blood glucose level (fB-gluk) ≥ 110 mg/dL (6.1 mmol/l) or random blood glucose ≥ 180 mg/dL (10.0 mmol/l) [1]. A patient was also defined as diabetic if on antidiabetic medication according either to hospital records or the reimbursement database maintained by the Social Insurance Institution of Finland. Further they were divided in insulin-

treated diabetics regardless of oral antidiabetic medication and in non-insulin-treated diabetics based on hospital records at the time of admission for CABG. BMI was calculated as mass/height² (kg/m²).

Cardiovascular death was defined as any death caused by coronary heart disease or sudden death during 2 months to 16 years postoperatively. Stroke was considered as cardiovascular death.

Survival analysis

Overall survival (0-16 years postoperatively) was analyzed, including hospital and immediate postoperative survival for 945 patients. Separate survival analyses (2 months to 10 and 16 years) were then carried out for 910 patients, focusing on survival after the immediate postoperative phase. Survival analyses were made according to the metabolic status of the patients (DM-/MetS-, DM-/MetS+ and DM+). The cumulative relative mortality for each group was calculated in 2-month steps against age-, sex- and time-specific national background populations as described in Statistical methods. The first subanalysis was then made in similar manner to reveal survival of DM patients with and without insulin therapy. In the second subanalysis the association of MetS (yes or no) with survival was identically studied in DM patients. The study protocol was approved by the Ethics Committee of Tampere University Hospital.

Statistical methods

In the comparison of patient characteristics, categorical data are tabulated as frequencies and percentages, and continuous variables are expressed as mean and SD. Differences between two groups were tested by Chi squared test and the Wilcoxon rank test, and in cases of more than two groups by Kruskal-Wallis test. Fisher's exact test was used when appropriate in two-by-two tables with directed hypothesis. Differences in mean values between two groups were tested by Student's t-test and in the case of more than two groups by analysis of variance.

The relative survival rate was analyzed by sex, age, DM and MetS using the Life Table method [19]. In this approach, the observed survival rates of the groups are compared to the rates based on age-, sex- and time-specific life tables for the whole population in Finland. Calculation of survival rates was based on the individual life expectancies of the target population for the target years (reference population). The survival of the reference population is effectively 1.00. If the survival curve of the group remains below that of the reference population there is excess mortality in the group.

To study the independent significance of MetS and DM for clinical outcome (2 months to 16 years), multivariate analysis was made using an optimizing stepwise procedure

based on the Bayesian approach [20]. This procedure was developed for nominal variables, and does not require a perfect variable matrix. It selects, by the heuristic approach, the combination of variables which best explains the selected outcome factor. The Bayesian approach is applied by counting posterior likelihood ratios or odds ratios for each combination. The aim was to find an optimal subset of pre- and intraoperative variables to provide the best explanation. The parameters included in the multivariate analysis were age, gender, BMI, all significant cardiometabolic diseases and related operations as well as cardiac, lipid lowering and psychiatric medications. Also essential intraoperative characteristics of CABG were included in the analysis. Altogether 31 parameters were included in the Bayesian approach (Additional file 1: Table S1).

Results

Study population

The essential clinical characteristics of the 910 patients are shown in Table 1. Their mean age was 61.6 (SD 8.4) years; 191 of them were women (mean age 64.8 [SD 7.5] years) and 719 men (mean age 60.8 [SD 8.4] years). Of the 910 subjects, 41% were free of MetS or DM and 31% had MetS without DM (Figure 1).

Non-diabetic patients with MetS had by definition more often metabolic abnormalities than those without MetS (Table 1). Similar findings were obtained in patients with diabetes, of whom 82% had MetS. Non-diabetic patients without MetS had more often normal renal function than others ($P < 0.01$). Diabetic patients were older having more angina pectoris and peripheral arterial disease than other patients (Table 1). Smoking habits and the prevalence of hypercholesterolemia did not differ between the three groups.

Overall survival

No patients were lost during the 16-year follow-up. The overall postoperative survival is presented in Figure 2. DM was associated with significantly unfavourable prognosis compared to the non-diabetic patients in the two other groups (both $p < 0.001$). The difference in survival was already seen during the course of the first two postoperative months, where a total of 35 out of 945 patients (3.7%) died. Among non-diabetic patients there was no difference between subjects with or without MetS.

Long-term survival against background population

The analysis between 2 months and 16 years revealed that of the 910 patients alive two months postoperatively 432 (47.5%) had died. Figure 3A presents the relative survival of the three study groups matched by age, gender and calendar year against their respective Finnish background populations (relative survival = 1.00). After the

Table 1 Preoperative demographic data, clinical characteristics and severity of coronary heart disease in 910 patients surviving two months after CABG

	DM-/MetS-	DM-/MetS+	DM+	Overall
	n = 375	n = 279	n = 256	p-value
Female (%)	15.2	26.2	23.8	<0.01 ^{1,2}
Mean Age (years) (SD)	61.3 (8.2)	60.7 (8.6)	63.3 (8.4)	<0.001 ^{2,3}
Variables of Modified MetS				
BMI (kg/ m ²)	25.8	28.7	28.1	NA
Elevated Blood Pressure (%)	40.9	83.1	67.5	
HDL Cholesterol (low, %)	44.9	90.2	65.3	
Triglyceride (high, %)	27.4	83.7	67.7	
Elevated Glucose or DM (%)	4.5	25.8	100.0	
Concomitant Diseases				
Hypercholesterolemia (%)	69.5	80.3	77.7	NS
Previous MI (%)	70.5	67.8	67.7	NS
Previous TIA or stroke (%)	8.9	8.6	13.9	NS
Intermittent Claudication (%)	6.2	4.7	18.6	<0.001 ^{3,4}
Renal Function				
CreaCl (ml/min) (SD)	76.4 (13.8)	74.2 (18.2)	73.7 (16.9)	NS
CreaCl < 60 ml/min/1,73 m ² (%)	11.0	19.0	19.7	<0.01 ^{1,2}
Preoperative Smoking (%)	66.6	60.2	66.4	NS
Severity of Heart Disease				
EF (%) (SD)	60 (14)	61 (13)	58 (14)	<0.05 ⁵
EF ≤ 35% (%)	7	4	11	<0.05 ⁵
NYHA II (%)	11.9	13.0	6.5	
NYHA III (%)	59.9	54.3	56.3	<0.05 ⁵
NYHA IV (%)	28.2	32.6	37.2	
Operation Characteristics				
Three-vessel Disease (%)	61.1	59.7	58.6	NS
Left Main Disease (%)	13.1	16.6	14.1	NS
Number of Grafts	3.39	3.38	3.35	NS
Use of Arterial Grafts (%)	86.3	83.4	81.0	NS
Concomitant Operation (%)	6.1	3.3	7.6	NS
Perfusion Time (SD)	107.0 (36.6)	108.0 (58.8)	112.3 (34.2)	NS
Urgent or Emergency Operation (%)	26.7	29.9	33.5	NS

Abbreviations: *MI* myocardial infarct, *TIA* transient ischemic attack, *EF* ejection fraction, *NYHA* angina pectoris symptoms according to New York Heart Association, *CHD* coronary heart disease, *LM* left main, low HDL cholesterol: men < 1.03 mmol/l, women < 1.3 mmol/l, elevated triglycerides: ≥ 1.7 mmol/l, NS = not significant, NA = not applicable.

¹Unadjusted p < 0.01 by the pooled t-test for the comparison DM-/MetS+ against DM-/MetS-.

²Unadjusted p < 0.01 by the pooled t-test for the comparison DM+ against DM-/MetS-.

³Unadjusted p < 0.001 by the pooled t-test for the comparison DM+ against DM-/MetS+.

⁴Unadjusted p < 0.001 by the pooled t-test for the comparison DM+ against DM-/MetS-.

⁵Unadjusted p < 0.05 by the pooled t-test for the comparison DM+ against other groups.

perioperative phase, the 16-year relative survival of DM-/MetS- patients was 1.037, (95% CI, 1.026 to 1.048; < 0.0001) compared to that of the background population. For the first 10 postoperative years the relative survival was 1.033 (95% CI, 1.021 to 1.045; p < 0.0001).

Metabolic syndrome and long-term survival

In non-diabetic patients with MetS the long-term survival between 2 months and 16 years was poorer than among patients without MetS (P < 0.0001). However, during the same period the relative survival of DM-/MetS+ patients

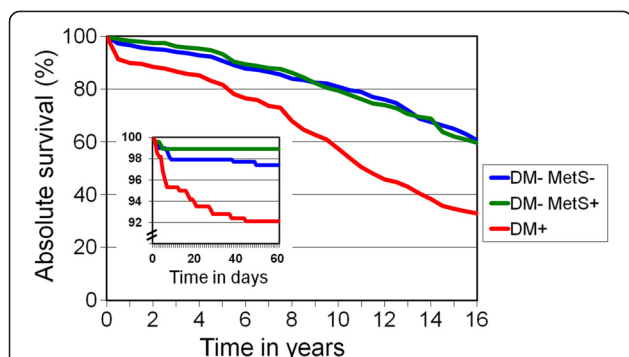


Figure 2 Postoperative absolute survival of patients with neither diabetes nor metabolic syndrome (DM-/MetS-), patients with only metabolic syndrome (DM-/MetS+) and patients with diabetes regardless of metabolic syndrome (DM+) during the 16-year follow-up. Comparison between DM-/MetS- and DM-/MetS+: NS Comparison of DM+ against both groups: $P < 0.001$. Follow-up of the first two months is shown in the small inset ($n = 945$).

resembled that of the matched background population (relative survival, 0.998; 95% CI, 0.978 to 1.018; NS).

During the first 10 postoperative years, the relative survival of DM-/MetS+ patients was 1.8% better than that of the matched background population (relative survival, 1.018; 95% CI, 1.010 to 1.026; $p < 0.0001$) but subsequently deteriorated thereafter (Figure 3A).

Diabetes mellitus and long-term survival

In the postoperative period of 2 months to 16 years, the survival of patients with DM was significantly inferior compared to the background population (relative survival, 0.86; 95% CI, 0.82 to 0.90) and to both non-diabetic patient groups (all $p < 0.0001$; Figure 3A). DM patients on insulin therapy had poorer survival than those with not on insulin ($p < 0.01$, Figure 3B).

Among patients with DM, MetS seemed not to affect postoperative survival (2 months-16 years) after adjustment for age, gender and time (absolute survivals, 0.39;

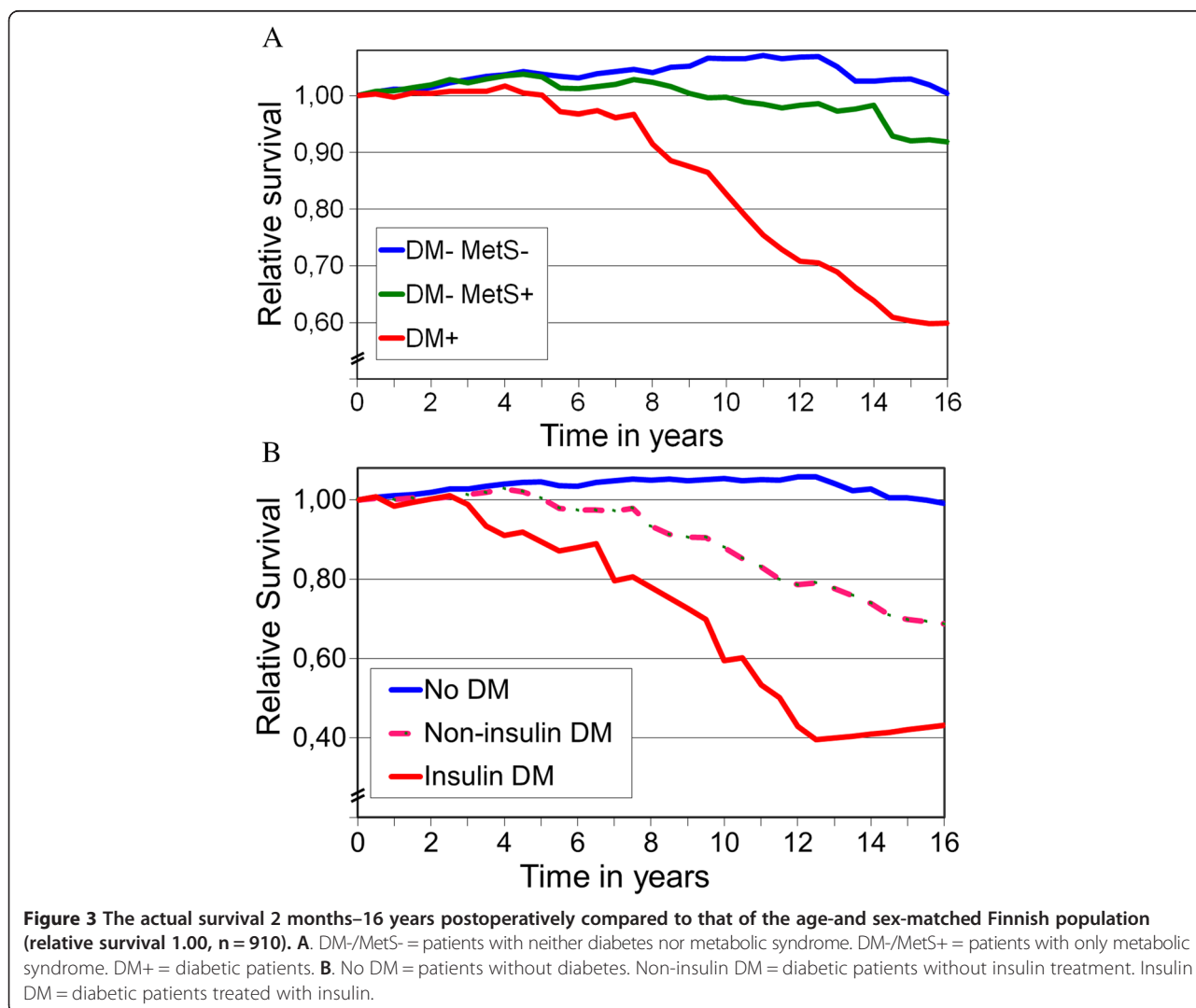


Figure 3 The actual survival 2 months–16 years postoperatively compared to that of the age- and sex-matched Finnish population (relative survival 1.00, $n = 910$). **A.** DM-/MetS- = patients with neither diabetes nor metabolic syndrome. DM-/MetS+ = patients with only metabolic syndrome. DM+ = diabetic patients. **B.** No DM = patients without diabetes. Non-insulin DM = diabetic patients without insulin treatment. Insulin DM = diabetic patients treated with insulin.

95% CI, 0.28 to 0.50 for DM+/MetS+ and 0.36; 95% CI, 0.10 to 0.62 for DM+/MetS-, NS).

Causes of death

Cardiovascular and non-cardiovascular death rates were 17.1% and 20.5% for DM-/MetS-, 18.3% and 21.5% for DM-/MetS+ and 38.7% and 28.1% for DM+ patients, respectively. Further, out of all deaths the corresponding proportions of cardiovascular deaths were 45.4%, 45.9% and 56.1%, respectively ($p < 0.0001$ between DM- and DM+ patients). Stroke was reported as a cause of death in only five patients.

Best predictors of long-term prognosis

Bayesian multivariate analysis revealed together six variables to predict clinical outcome (2 months to 16 years) in relation to the national background population, *i.e.* age, diabetes, left ventricular ejection fraction, BMI, perfusion time during the CABG and peripheral arterial disease. Using this model, the measure of agreement ($\kappa = 0.45$) was moderate.

Discussion

To the best of our knowledge this study is the first in which the survival of non-diabetic and diabetic CABG patients was compared to that of matched background populations.

Our principal finding was that the long-term prognosis of patients with neither diabetes nor metabolic syndrome was better than that of the age-, sex- and time-matched background population. Further, in non-diabetic patients the presence of metabolic syndrome reduced long-term survival after CABG when compared to those without MetS. However, the mortality of MetS patients was not significantly inferior to that of the matched background population, which might reflect the careful postoperative follow-up and treatment of known risk factors of operated MetS patients.

Not surprisingly, DM was associated with significantly increased intermediate- and long-term mortality. Survival was even shorter if the diabetes treatment strategy included insulin compared to patients without insulin therapy. MetS *per se* did not impair survival among diabetic patients.

MetS, glucose intolerance and insulin resistance form together complex relationships, whose interacting pathophysiological roles are not yet fully understood. Insulin resistance leads to glucose intolerance, if pancreatic compensation processes are incomplete [21]. Glucose abnormalities with or without diabetes predict cardiovascular events and mortality [22,23]. Insulin resistance is also associated with MetS and its components [24]. Further, MetS has been shown to worsen the prognosis of coronary heart disease patients [25].

However, until recently no studies have specifically examined the prognostic significance of MetS for longer than 10 years after CABG.

Two studies have yielded different results regarding the impact of metabolic syndrome [8,9]. In the BARI trial no significant difference was seen in the death-rate or MI during the 10-year follow-up between patients with and without MetS [9]. In another study of CABG patients MetS predicted inferior outcome in the group of non-diabetic patients [8]. An increase in both all-cause and cardiac mortality became apparent approximately 10 years after surgery. The detrimental effect of MetS on survival was more marked in non-DM patients than in DM patients [8]. Our data are in concordance with and expand these findings.

Diabetes is associated with impaired outcome after CABG [26-28]. However, relation of insulin treatment on the long-term prognosis after CABG has been controversial [14,15,29]. Thourani and Alserius with their co-workers found independently that diabetic patients had a poorer 10-year prognosis than non-diabetic patients [14,29]. In both studies insulin-treated patients with diabetes had the poorest 10-year survival rate. Also, in a 10-year follow-up of CABG patients Mohammadi and colleagues found insulin-treated DM to be an independent risk factor for long-term cardiac mortality [15]. However, in DM patients not on insulin therapy, the cardiac-specific survival was similar to that observed in non-diabetic patients [15].

Our results are in accord with the findings of Thourani and Alserius, suggesting inferior survival of DM patients on insulin compared to those without insulin or to non-diabetics. Insulin treatment might suggest more severe and advanced diabetes in this cohort.

We found, that the excessive death rate of diabetics was mostly but not completely related to cardiovascular causes. Our results conform to the idea that long-lasting DM is associated with a generalized vascular disease which is characterized by impaired vascular endothelial function and hypercoagulation [14,29].

The strength of the present study is the reliability and scope of the national registers used, allowing 100% coverage of the mortality data of our patients [30]. Our follow-up includes all subjects operated, like those migrated in the country and one patient moved in the neighbouring country. The length of the postoperative follow-up was exactly 16 years allowing conclusions more valid than those based on a shorter follow-up. According to Finnish health care policy every citizen has access to health care mainly financed by taxes. So in the background population such social factors, like a proportion of non-secured citizens, did not affect our results [31].

Certain limitations should also be considered. Firstly, the perioperative data were collected retrospectively [16].

Even though information was completed with patient questionnaires and direct contacts, 16 (1.7%) out of the original sample of 961 patients were excluded by reason of insufficient data. Secondly, we identified BMI-based obesity, not waist circumference, as a factor of the metabolic syndrome. Nevertheless, BMI is widely used in the modified definition of MetS and studies have demonstrated concordance between the definitions of MetS [7,18].

Conclusions

In this long-term follow-up study patients with neither DM nor MetS had extremely good prognosis for at least 16 years when compared to the matched background population. Also the survival of patients with MetS but without DM had a good prognosis. Survival of DM patients started to deteriorate already short after the operation.

Additional file

Additional file 1: Table S1. Univariate predictors of mortality. All variables presented here were taken into the Bayesian multivariate analysis.

Competing interests

The authors declare that they have no competing interests.

Authors' contributions

VH and AP designed the study. They acquired the final data and drafted the manuscript. MK carried out data maintenance and statistics. JL, MT and SV participated in the design and drafting of the manuscript. Other members of the W-CABG study group participated in their own hospitals in data acquisition. All authors read and approved the final manuscript.

Acknowledgements

We acknowledge the professional technical help received from Vesa Virtanen MD, PhD, Kalevi Oksanen MD, PhD and Mr Robert MacGilleon as well as the cooperation of personnel in the participating hospitals (Central Hospitals of Kanta-Häme, Päijät-Häme, Seinäjoki and Vaasa together with local hospitals in the Tampere University Hospital district).

The members of the W-CABG study group are V. Hällberg, A. Palomäki, M. Kataja, M. Tarkka, S. Voutilainen, H. Salonen, J. Lahtela, K. Aitola, T. Eerikäinen, M. Helén, M. Häkkinen, J. Karjalainen, V. Lappeteläinen, and H. Puolijoki.

Funding

The W-CABG study was supported by grants from the Ministry of Health and Social Welfare through the Medical Research Funds of Tampere University Hospital and Kanta-Häme Central Hospital.

Author details

¹Kanta-Häme Central Hospital, Hämeenlinna, Finland. ²University of Tampere, Medical School, Tampere, Finland. ³Tampere University Hospital, Tampere, Finland. ⁴Päijät-Häme Central Hospital, Lahti, Finland. ⁵National Institute for Health and Welfare, Helsinki, Finland.

Received: 8 November 2013 Accepted: 3 January 2014

Published: 22 January 2014

References

1. Alberti KG, Zimmet PZ: Definition, diagnosis and classification of diabetes mellitus and its complications: part I: diagnosis and classification of diabetes mellitus provisional report of a WHO consultation. *Diabet Med* 1998, **5**:539–553.
2. Executive summary of the third report of the national cholesterol education program (NCEP) expert panel on detection, evaluation, and treatment of high blood cholesterol in adults (Adult Treatment Panel III). *JAMA* 2001, **285**:2486–2497.
3. Lakka HM, Laaksonen DE, Lakka TA, Niskanen LK, Kumpusalo E, Tuomilehto J, Salonen JT: The metabolic syndrome and total and cardiovascular disease mortality in middle-aged men. *JAMA* 2002, **288**:2709–2716.
4. Ford ES: Risks for all-cause mortality, cardiovascular disease, and diabetes associated with the metabolic syndrome. *Diabetes Care* 2005, **28**:1769–1778.
5. Pohjantähti-Maaroos H, Palomäki A, Kankkunen P, Laitinen R, Husgafvel S, Oksanen K: Circulating oxidized low-density lipoproteins and arterial elasticity: comparison between men with metabolic syndrome and physically active counterparts. *Cardiovasc Diabetol* 2010, **9**:41.
6. Lorenzo C, Williams K, Hunt K, Haffner S: The national cholesterol education panel–adult treatment panel III, international diabetes federation, and world health organization definitions of the metabolic syndrome as predictors of incident cardiovascular disease and diabetes. *Diabetes Care* 2007, **30**:8–13.
7. Reaven GM: The metabolic syndrome: time to get off the merry-go-round? *J Intern Med* 2010, **269**:127–136.
8. Kajimoto K, Kasai T, Miyauchi K, Hirose H, Yanagisawa N, Yamamoto T, Takazawa K, Niinami H, Hosoda Y, Daida H, Amano A: Metabolic syndrome predicts 10-year mortality in non-diabetic patients following coronary artery bypass surgery. *Circ J* 2008, **72**:1481–1486.
9. Yatskar L, Holper E, Bansilal S, Schwartzbard A, Lombarder M, Ramanathan K, Feit F, Fisher E, Faxon D, Hochman JS, Farkouh ME: Long-term outcomes in non-diabetic patients with metabolic syndrome undergoing revascularization for multi-vessel coronary artery disease. *Atherosclerosis* 2008, **198**:389–395.
10. Haffner SM, Lehto S, Rönnemaa T, Pyörälä K, Laakso M: Mortality from coronary heart disease in subjects with type 2 diabetes and in non-diabetic subjects with and without prior myocardial infarction. *NEJM* 1998, **339**:229–234.
11. Yusuf S, Hawken S, Ounpuu S, Dans T, Avezum A, Lanas F, McQueen M, Budaj A, Pais P, Varigos J, Lisheng L, INTERHEART study investigators: Effect of potentially modifiable risk factors associated with myocardial infarction in 52 countries (the INTERHEART study): case-control study. *Lancet* 2004, **364**:937–952.
12. Herlitz J, Wognsen GB, Emanuelsson H, Haglid M, Karlson BW, Karlson T, Albertsson P, Westberg S: Mortality and morbidity in diabetic and non-diabetic patients during a 2-year period after coronary artery bypass grafting. *Diabetes Care* 1996, **19**:698–703.
13. Carson JL, Scholz PM, Chen YA, Peterson ED, Gold J, Schneider SH: Diabetes mellitus increases short-term mortality and morbidity in patients undergoing coronary artery bypass graft surgery. *J Am Coll Cardiol* 2002, **40**:418–423.
14. Alseriy T, Hammar N, Nordqvist T, Ivert T: Risk of death or acute myocardial infarction 10 years after coronary artery bypass surgery in relation to type of diabetes. *Am Heart J* 2006, **152**:599–605.
15. Mohammadi S, Dagenais F, Mathieu P, Kingma JG, Doyle D, Lopez S, Baillot R, Perron J, Charbonneau E, Dumont E, Metras J, Desaulniers D, Voisine P: Long-term impact of diabetes and its comorbidities in patients undergoing isolated primary coronary artery bypass graft surgery. *Circulation* 2007, **116**:I-220–I-225.
16. Hällberg V, Palomäki A, Kataja M, Tarkka M: Return to work after coronary artery bypass surgery: a 10-year follow-up study. *Scand Cardiovasc J* 2009, **43**:277–284.
17. Levey AS, Stevens LA, Schmid CH, Zhang YL, Castro AF III, Feldman HI, Kusek JW, Eggers P, Van Lente F, Greene T, Coresh J: CKD-EPI (Chronic Kidney Disease Epidemiology Collaboration): a new equation to estimate glomerular filtration rate. *Ann Intern Med* 2009, **150**:604–612.
18. Park YW, Zhu S, Palaniappan L, Heshka S, Carnethon MR, Heymsfield SB: The metabolic syndrome: prevalence and associated risk factor findings in the US population from the third national health and nutrition examination survey, 1988–94. *Arch Intern Med* 2003, **163**:427–436.
19. Hakulinen T: On long-term relative survival rates. *J Chron Dis* 1977, **30**:431–443.
20. Kurki T, Kataja M: Preoperative prediction of postoperative morbidity in coronary artery bypass grafting. *Ann Thorac Surg* 1996, **61**:1740–1745.
21. Cavaghan MK, Ehrmann DA, Polonsky KS: Interactions between insulin resistance and insulin secretion in the development of glucose intolerance. *J Clin Invest* 2000, **106**:329–333.

22. Mazurek M, Kowalczyk J, Lenarczyk R, Zielinska T, Sedkowska A, Pruszkowska-Skrzep P, Swiatkowski A, Sredniawa B, Kowalski O, Polonski L, Strojek K, Kalarus Z: **The prognostic value of different glucose abnormalities in patients with acute myocardial infarction treated invasively.** *Cardiovasc Diabetol* 2012, **11**:78.
23. Kuramitsu S, Yokoi H, Domei T, Nomura A, Watanabe H, Yamaji K, Soga Y, Arita T, Kondo K, Shirai S, Ando K, Sakai K, Iwabuchi M, Nosaka H, Nobuyoshi M: **Impact of post-challenge hyperglycemia on clinical outcomes in Japanese patients with stable angina undergoing percutaneous coronary intervention.** *Cardiovasc Diabetol* 2013, **12**:74.
24. Vonbank A, Saely CH, Rein P, Drexel H: **Insulin resistance is significantly associated with the metabolic syndrome, but not with sonographically proven peripheral arterial disease.** *Cardiovasc Diabetol* 2013, **12**:106.
25. Nigam A, Bourassa MG, Fortie A, Guertin MC, Tardif JC: **The metabolic syndrome and its components and the long-term risk of death in patients with coronary heart disease.** *Am Heart J* 2006, **151**:514–521.
26. Barsness GW, Petersson ED, Ohman EM, Nelson CL, DeLong ER, Reves JG, Smith PK, Anderson RD, Jones RH, Mark DB, Califf RM: **Relationship between diabetes and long-term survival after coronary bypass and angioplasty.** *Circulation* 1997, **96**:2551–2556.
27. Hakala T, Pitkänen O, Halonen P, Mustonen J, Turpeinen A, Hippeläinen M: **Early and late outcome after coronary artery bypass surgery in diabetic patients.** *Scand Cardiovasc J* 2005, **39**:177–181.
28. Ketonen M, Pajunen P, Koukkunen H, Immonen-Räihä P, Mustonen J, Mähönen M, Niemelä M, Kuulasmaa K, Palomäki P, Arstila M, Vuorenmaa T, Lehtonen A, Lehto S, Miettinen H, Torppa J, Tuomilehto J, Airaksinen J, Pyörälä K, Salomaa V, for the FINMONICA/FINAMI Study Group: **Long-term prognosis after coronary artery surgery.** *Int J Card* 2008, **124**:72–79.
29. Thourani VH, Weintraub WS, Stein B, Gebhardt SSP, Craver JM, Jones EL, Guyton RA: **Influence of diabetes mellitus on early and late outcome after coronary artery bypass grafting.** *Ann Thorac Surg* 1999, **67**:1045–1052.
30. Pajunen P, Koukkunen H, Ketonen M, Jerkkola T, Immonen-Räihä P, Kärjä-Koskenkari P, Mähönen M, Niemelä M, Kuulasmaa K, Palomäki P, Mustonen J, Lehtonen A, Arstila M, Vuorenmaa T, Lehto S, Miettinen H, Torppa J, Tuomilehto J, Kesäniemi YA, Pyörälä K, Salomaa V: **The validity of the Finnish hospital discharge register and causes of death register data on coronary heart disease.** *Eur J Cardiovasc Prev Rehabil* 2005, **12**:132–137.
31. Stimpson JP, Wilson FA, Murillo R, Pagan JA: **Persistent disparities in cholesterol screening among immigrants to the United States.** *Int J Equity Health* 2012, **12**:22.

doi:10.1186/1475-2840-13-25

Cite this article as: Hällberg *et al.*: Associations of metabolic syndrome and diabetes mellitus with 16-year survival after CABG. *Cardiovascular Diabetology* 2014 **13**:25.

Submit your next manuscript to BioMed Central and take full advantage of:

- Convenient online submission
- Thorough peer review
- No space constraints or color figure charges
- Immediate publication on acceptance
- Inclusion in PubMed, CAS, Scopus and Google Scholar
- Research which is freely available for redistribution

Submit your manuscript at
www.biomedcentral.com/submit

