



ORIGINAL ARTICLE

The prognostic value of extramural venous invasion in preoperative MRI of rectal cancer patients

Taru M. Lehtonen¹ | Laura E. Koskenvuo¹ | Toni T. Seppälä^{1,2} | Anna H. Lepistö^{1,2}

¹Department of Surgery, Helsinki University Hospital and University of Helsinki, Helsinki, Finland

²Applied Tumor Genomics, Research Programs Unit, University of Helsinki, Finland

Correspondence

Taru M. Lehtonen, Department of Surgery, Helsinki University Hospital and University of Helsinki, Helsinki, Finland.
Email: Taru.lehtonen@hus.fi

Abstract

Aim: This study aimed to examine the prognostic value of extramural venous invasion observed in preoperative MRI on survival and recurrences.

Method: In total, 778 rectal cancer patients were evaluated in multidisciplinary meetings in Helsinki University Hospital during the years 2016–2018. 635 patients met the inclusion criteria of stage I–III disease and were intended for curative treatment at the time of diagnosis. 128 had extramural venous invasion in preoperative MRI.

Results: The median follow-up time was 2.5 years. In a univariate analysis extramural venous invasion was associated with poorer disease-specific survival (hazard ratio [HR] 2.174, 95% CI 1.118–4.224, $P = 0.022$), whereas circumferential margin ≤ 1 mm, tumour stage $\geq T3c$ or nodal positivity were not. Disease recurrence occurred in 17.3% of the patients: 13.4% had metastatic recurrence only, 1.7% mere local recurrence and 2.2% both metastatic and local recurrence. In multivariate analysis, extramural venous invasion (HR 1.734, 95% CI 1.127–2.667, $P = 0.012$) and nodal positivity (HR 1.627, 95% CI 1.071–2.472, $P = 0.023$) were risk factors for poorer disease-free survival (DFS). Circumferential margin ≤ 1 mm was a risk factor for local recurrence in multivariate analysis (HR 5.675, 95% CI 1.274–25.286, $P = 0.023$).

Conclusion: In MRI, circumferential margin ≤ 1 mm is a risk factor for local recurrence, but the risk is quite well controlled with chemoradiotherapy and extended surgery. Extramural venous invasion instead is a significant risk factor for poorer DFS and new tools to reduce the systemic recurrence risk are needed.

KEYWORDS

extramural venous invasion, MRI, rectal cancer

INTRODUCTION

Colorectal cancer is the second most common cancer in Europe and in Finland. Rectal cancer constitutes about one-third of the cases. In 2018, the incidence of colorectal cancer in Finland was 51/100 000 for women and 72/100 000 for men. Based on the Finnish Cancer Registry database, the 5-year overall survival (OS) rate in 2016–2018 was 66% [1]. In rectal cancer, survival and recurrence rates vary

considerably depending on the tumour stage at the time of diagnosis and tumour characteristics. The incidence of local recurrence varies from 4.4% to 26% [2,3]. The risk of local recurrence started to decrease with improvements in surgical techniques such as total mesorectal excision (TME) [4] and extended abdominoperineal resection [5]. The other major contributors have been the use of neoadjuvant (chemo)radiotherapy [2,3,6,7] and the centralization of management to tertiary centres [8,9].

This is an open access article under the terms of the [Creative Commons Attribution-NonCommercial](https://creativecommons.org/licenses/by-nc/4.0/) License, which permits use, distribution and reproduction in any medium, provided the original work is properly cited and is not used for commercial purposes.

© 2022 The Authors. *Colorectal Disease* published by John Wiley & Sons Ltd on behalf of Association of Coloproctology of Great Britain and Ireland.

Extramural venous invasion (EMVI) detected in histological specimens is defined as the involvement of the veins beyond the muscularis propria [10]. It is an independent risk factor for local recurrence, metachronous nodal and distant metastases and also for overall mortality [10,11]. Involved surgical margin and mucinous histology are additional risk factors for a local recurrence [12]. After adoption of the TME technique, the effect of mesenteric nodal involvement on local recurrence risk is less clear [13–15].

The aim of preoperative neoadjuvant treatment including chemoradiotherapy (CRT) is to reduce the risk of local and distant recurrences [3]. The decisions regarding neoadjuvant treatment are taken in multidisciplinary meetings, and MRI has proven to be the best modality to estimate the possibly threatened circumferential margin (CRM) and EMVI [16,17]. For nodal involvement, MRI is the best method available but yet not particularly accurate, as it is highly sensitive but not specific [16,17]. For locally advanced rectal cancers, preoperative CRT has been shown to be beneficial in ensuring cancer-free surgical margins and thus decreasing the risk of local recurrence [7]. So far, CRM, T class and nodal status in MRI have been the main parameters guiding decision making on neoadjuvant therapy. Even though the treatment planning has improved local control, metachronous distant metastases remain a problem impacting survival, and preoperatively identifying EMVI has not changed the situation [18,19]. Therefore, we aimed to study the effect of EMVI seen in preoperative MRI (mrEMVI) on survival and local recurrence risk, and to study the prognostic impact of the nodal status in MRI.

PATIENTS AND METHODS

Patients

Patients diagnosed with rectal cancer who were evaluated in multidisciplinary rectal cancer meetings in Helsinki University Hospital between January 2016 and December 2018 were included. Helsinki University Hospital serves as a secondary referral centre for 1.1 million and a tertiary referral centre for 1.6 million inhabitants.

The data comprised 778 patients. The eligibility criteria were rectal adenocarcinoma or mucinous adenocarcinoma with distal margin at or below 15 cm from the anal verge on clinical examination or MRI, and the intent for curative treatment at the time of diagnosis.

Exclusion criteria were metastatic disease at the time of diagnosis, no MRI available before surgery, and final histology other than predominantly adenocarcinoma or mucinous adenocarcinoma. Finally, 635 eligible patients were included (Table 1).

Our primary aim was to examine death due to all causes OS, death from rectal cancer disease-specific survival (DSS), disease recurrence disease-free survival (DFS) and local recurrence. The primary test factor was mrEMVI status in the preoperative MRI. As secondary points of interest we examined the above-mentioned outcomes according to mrT stage, mrN stage and mrCRM. We also did a subgroup analysis of the post-CRT patients with the above-mentioned outcomes.

What does this paper add to the literature?

The article offers more information on the importance of extramural venous invasion and its relationship to rectal cancer recurrence. The value of the study is enhanced by the quite large study population (635 consecutive patients) which were all evaluated in rectal cancer multidisciplinary meetings and treated in a single centre.

The data on the patients were obtained from electronic medical records. Information on neoadjuvant treatment, radiotherapy (RT), patient demographics, surgical technique, postoperative adjuvant therapy and histopathological records was acquired. Long-course 45–54 Gy CRT (capecitabine as a radiosensitizer) and long wait (7–11 weeks) before surgery were preferred for tumours with threatened margin or high volume. Alternatively, long-course RT or short-course 5 × 5 Gy RT with long wait before surgery was chosen for fragile patients not suitable for long-course CRT. The data on patients not attending follow-up in the Helsinki University Hospital were obtained from the electronic patient records of local health-care centres (primary healthcare providers). Causes of death were identified from the Finnish Population Register Centre. The study was approved by the local institutional review board.

Imaging assessment

MRI was performed using, in most cases, the Siemens scanner 1.5 T or 3 T using high resolution multichannel phased-array pelvic surface coils. Bowel preparation for the rectum was used.

The imaging interpretation was done by five specialized gastrointestinal radiologists regularly attending the rectal cancer multidisciplinary meetings. The structured report of the preoperative MRI included mrT stage (T1, T2, T3a–d, T4a–b), primary tumour extramural extension, mrCRM, distance from the anal verge, nodal status (mrN0, mrN1, mrN2) and mrEMVI [20]. The tumours with threatened margins (mrCRM ≤ 1 mm) above the peritoneal reflection were reported T4a and the tumours below the peritoneal reflection T3mrf+.

The nodes were reported positive if their size was 5 mm or greater, had heterogeneity or had irregular margins. Patients were classified as mrN0 in the absence of lymph node metastasis, as mrN1 in the case of one to three regional positive lymph nodes and as mrN2 for four or more positive nodes.

mrEMVI+ was reported when the tumour penetrated through the bowel wall and invaded at least one extramural vascular structure [21,22].

The radiological assessment of distant metastases (M0, M1a–c) was based on the structured report of whole body CT that was performed at the time of the diagnosis.

Only the patients undergoing long-course 45–54 Gy (C)RT with long wait or short-course RT 5 × 5 Gy with long wait before surgery

TABLE 1 Patient characteristics

		<i>n</i> = 635	%
Age (years)	Median (range)	70.1	24.1–98.2
Gender	Female	273	43.0
	Male	362	57.0
BMI (kg/m ²)	Mean (\pm SD)	25.7	(\pm 4.7)
ASA	1	43	6.8
	2	243	38.3
	3	277	42.6
	4	62	9.8
	Missing	62	1.6
	Distance from the anal verge	6 cm or less	286
	Over 6 cm	349	55
Histology	Adenocarcinoma	600	94.5
	Mucinous adenocarcinoma or signet cell features	35	5.5
MRI T stage	mrTx	9	1.4
	mrT1	6	0.9
	mrT2	114	18.0
	mrT3	233	36.7
	mrT3a	28	4.4
	mrT3b	149	23.5
	mrT3c	53	8.3
	mrT3d	3	0.5
	mrT4a or T3mrf+	180	28.3
	mrT4b	93	14.6
MRI N stage	mrN0	285	44.9
	mrN1	218	34.3
	mrN2	132	20.8
MRI EMVI	EMVI+	128	20.2
	EMVI–	503	79.2
	Missing	21	
MRI CRM	mrCRM \leq 1 mm	279	43.9
	mrCRM >1 mm	335	52.8
	Missing	21	
Pathological T stage	pTx	30	4.7
	pT1	50	7.9
	pT2	185	29.1
	pT3	306	48.2
	pT4	64	10.1
Pathological N stage	pN0	405	63.8
	pN1	153	24.1
	pN2	77	12.1
Pathological lymphovascular invasion	Positive	80	12.6
	Negative	552	86.9
	Missing	3	

(Continues)

TABLE 1 (Continued)

		n = 635	%
Neoadjuvant treatment	Long-course (chemo)radiotherapy 50 Gy	197	31.0
	Short-course radiotherapy 5 × 5 Gy	182	28.7
	No preoperative radiotherapy	256	40.3
Procedure	Anterior resection	461	72.6
	Abdominoperineal resection/ELAPE	153	24.1
	Hartmann	19	3.0
	Other	2	0.3
Postoperative adjuvant therapy	No	300	47.2
	Yes	309	48.7
	No, even though planned	24	3.8
	Missing	2	

Abbreviations: ASA, American Society of Anesthesiologists; BMI, body mass index; CRM, circumferential resection margin; ELAPE, extralevator abdominoperineal excision; EMVI, extramural venous invasion.

had a response MRI. Response MRI was performed approximately 6–7 weeks after the end of (C)RT.

Histopathological assessment

Histopathological information was gathered from pathological reports. Structured pathological reports were based on the Union for International Cancer Control TNM 7th edition. When the 8th edition was issued in 2018, mismatch repair immunohistochemical staining and budding were added to the structured report. The pathological report included information on histological type (World Health Organization 2010) [23], size of the tumour, tumour grade, depth of invasion (T class), the integrity of the mesorectal fascia and possible tumour perforations, and the resection margins including CRM. In the pathology report the number of metastatic and normal lymph nodes (N class) and the possible invasion of blood vessels, lymphatic vessels or nerves were listed. Response to RT was estimated at 1–5 (Dvorak classification) [24].

Postoperative follow-up

The follow-up visits were scheduled at 6 weeks and 6, 12, 18 and 24 months after the operation and included laboratory tests (carcinoembryonic antigen [CEA] and haemoglobin) and endoscopy of the colorectal/anal anastomosis; further, haemoglobin and CEA were taken yearly after 2 years until 5 years. In addition to routine protocol, for patients with increased risk of recurrence (node positive, high grade histology, lymphovascular invasion, mucinous histology) whole body CT was performed at 1 and 2 years after operation. For patients with coloanal anastomosis, flexible sigmoidoscopy was performed also at 3, 4 and 5 years from the operation. For patients with long-course CRT pelvic MRI, whole body CT, haemoglobin and CEA were arranged at 4 and 6 years. The follow-up of elderly

patients (>80 years) was decided individually. No patients were lost to follow-up.

Statistical analysis

Patient characteristics and surgical and pathology results were described using frequency and percentage for categorical variables and median and range for continuous variables. Data were compared using the Pearson chi-squared test for categorical variables. DSS and DFS were calculated with Kaplan–Meier analysis, and the survivals were compared with the log-rank test. The risk for disease recurrence or disease-specific death was analysed using Cox regression analysis. Potential risk factors with a $P < 0.1$ in univariate analysis were incorporated into multivariate logistic regression. All tests were two-sided, and $P < 0.05$ was considered statistically significant. A biostatistician was consulted on the methodology. The statistical analysis was conducted using SPSS 25 software.

RESULTS

Median age of the patients was 70.1 years (range 24.1–98.2 years) and 362 (57.0%) were men. Median body mass index (BMI) was 25.0 kg/m² (16.3–45.7 kg/m²) and 520 (82%) of the patients were American Society of Anesthesiologists Physical Status Classification class II–III. In 286 patients (45%) the tumour was located at 6 cm or less from the anal verge. The tumours were predominantly adenocarcinomas (94.5%), and 5.5% had mucinous histology. T-stage distribution in the MRI is presented in Table 1: 306 patients (48.2%) had mrT1–T3b tumour and 329 (51.8%) mrT3c–T4b tumour. Nodal status was mrN0 in 285 (44.9%), mrN1 in 218 (34.3%) and mrN2 in 132 (20.8%) patients. Altogether, 197 (31%) of the 635 patients were planned to receive long-course CRT as neoadjuvant treatment. Due to the side effects of the capecitabine or poor general condition,

eight received only RT (50.4 Gy). mrEMVI was found in 128 (20.2%) patients.

mrEMVI-positive patients

Of the 128 mrEMVI-positive patients, 76 (59.4%) underwent CRT before surgery, of whom two received only long-course RT, six patients received short-course RT (5 × 5 Gy) and had surgery after a long waiting interval, 23 received short-course RT (5 × 5 Gy) and had surgery within the following 5 days, and the remaining 23 patients received no neoadjuvant treatment. A report of the response MRI with EMVI information was available in 75 of the mrEMVI+ patients, and in the following response MRI 30 patients out of 75 (40%) mrEMVI+ patients turned mrEMVI negative.

Disease-specific survival and disease-free survival

The median follow-up time was 2.5 years (0–4.7), during which time 71 (11.2%) deaths occurred, 39 (6.1%) being cancer related. During the follow-up time, OS was 88.8% and DSS rate was 93.7%. There were 110 (17.3%) recurrences. Altogether 25 (3.9%) local recurrences were found; of these 11 (1.7%) were local recurrences only, 14 (2.2%) were a combination of local and metastatic recurrences. 85 (13.4%) were metastatic recurrences.

In univariate analyses, mrEMVI+ disease was associated with poorer DSS ($P = 0.019$) (Table 2, Figure 1), whereas mrCRM ≤ 1 mm, mrT

class $\geq T3c$ or mrN+ were not. We also calculated the cumulative DSS at 3 years, to check that the smaller number of patients in follow-up after 3 years did not affect the result, and found that the difference between the groups remained ($P = 0.027$). In multivariate analysis, none of these was associated with DSS. mrEMVI+ disease and mrN+ were associated with poorer DFS in both univariate and multivariate analyses (Table 2, Figure 2) and mrEMVI+ patients developed metastases more often and earlier than mrEMVI– patients (Figure 2). Mean time until recurrence was 0.67 years in EMVI+ patients versus 1.26 years in EMVI– patients.

We also did a subgroup analysis of the 75 patients who were mrEMVI+ at the beginning and had a response MRI available. In the group of 30 patients who turned mrEMVI– in response MRI, DFS seemed to be better than for those 45 patients who remained mrEMVI+ (Figure 3), although the difference did not reach statistical significance ($P = 0.053$). There was no significant difference in OS ($P = 0.116$) nor in DSS ($P = 0.224$).

Risk factors for local recurrence in MRI

There were 25 (3.9%) local recurrences, of which 11 (1.7%) were solitary local recurrences without metastatic disease. In univariate analyses, mrCRM ≤ 1 mm and mrT class $\geq T3c$ were significant risk factors for local recurrence (Table 2, Figure 4A,B), but mrEMVI+ and mrN+ were not, nor was the location of the tumour ≤ 6 cm from the anal verge (Table 2). In Cox regression multivariate analysis, CRM remained an independent risk factor for local recurrence (Table 2).

TABLE 2 Cox regression analysis

	Univariate analysis			Multivariate analysis		
	HR	95% CI	P value	HR	95% CI	P value
<i>Disease-specific survival</i>						
mrEMVI+	2.174	1.118–4.224	0.022	1.700	0.787–3.675	0.177
mrCRM ≤ 1 mm	1.788	0.903–3.541	0.095	1.596	0.784–3.248	0.197
mrT3c–T4	1.628	0.858–3.089	0.136			
mrN+	1.347	0.709–2.556	0.363			
<i>Disease-free survival</i>						
mrEMVI+	2.129	1.421–3.192	0.000	1.734	1.127–2.667	0.012
mrCRM ≤ 1 mm	1.387	0.933–2.062	0.106			
mrT3c–T4	1.609	1.098–2.358	0.015	1.259	0.838–1.892	0.267
mrN+	1.912	1.281–2.854	0.002	1.627	1.071–2.472	0.023
<i>Local recurrence</i>						
mrEMVI+	1.764	0.735–4.231	0.204			
mrCRM ≤ 1 mm	5.481	1.844–16.293	0.002	5.675	1.274–25.286	0.023
mrT3c–T4	3.963	1.487–10.559	0.006	0.954	0.241–3.783	0.947
mrN+	1.469	0.649–3.326	0.356			
Low tumour (≤ 6 cm)	1.844	0.828–4.105	0.134			

Abbreviations: CRM, circumferential resection margin; EMVI, extramural venous invasion; HR, hazard ratio.

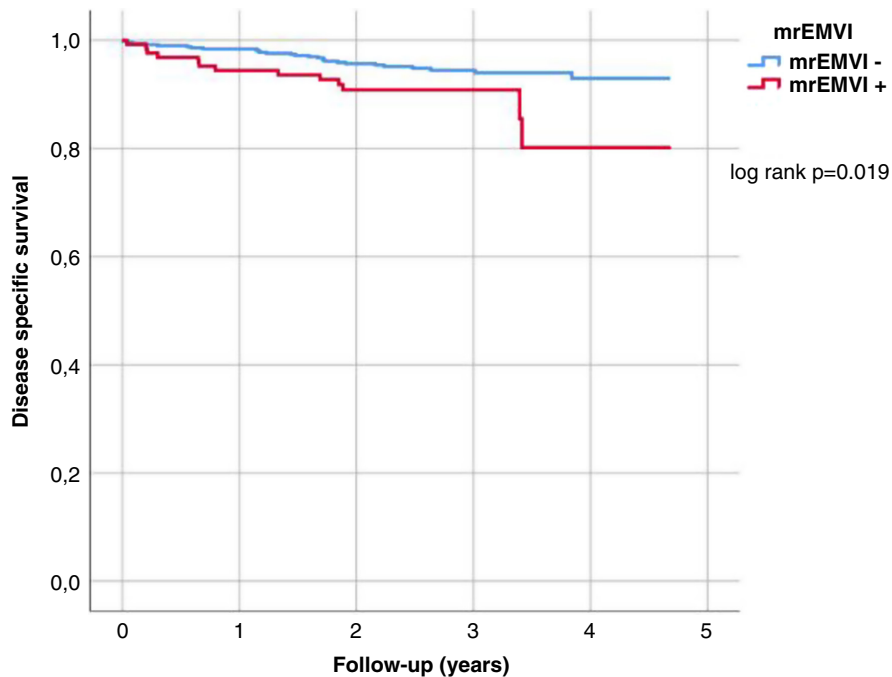


FIGURE 1 Disease-specific survival in mrEMVI-positive and mrEMVI-negative patients

No. of cases remaining:

EMVI+	128	115	85	33	7	0
EMVI-	504	486	406	210	79	0

3 patient's emvi-data missing and not included in the Kaplan Meier analysis

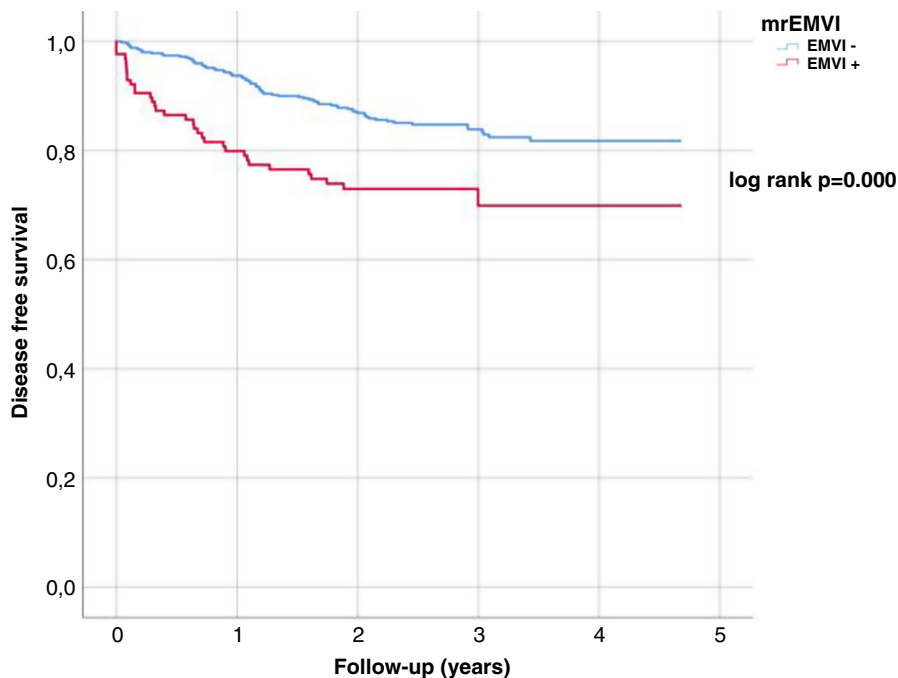


FIGURE 2 Disease-free survival in mrEMVI-positive and mrEMVI-negative patients

No. remaining cases:

EMVI+	128	95	67	23	6	0
EMVI-	503	456	358	184	72	0

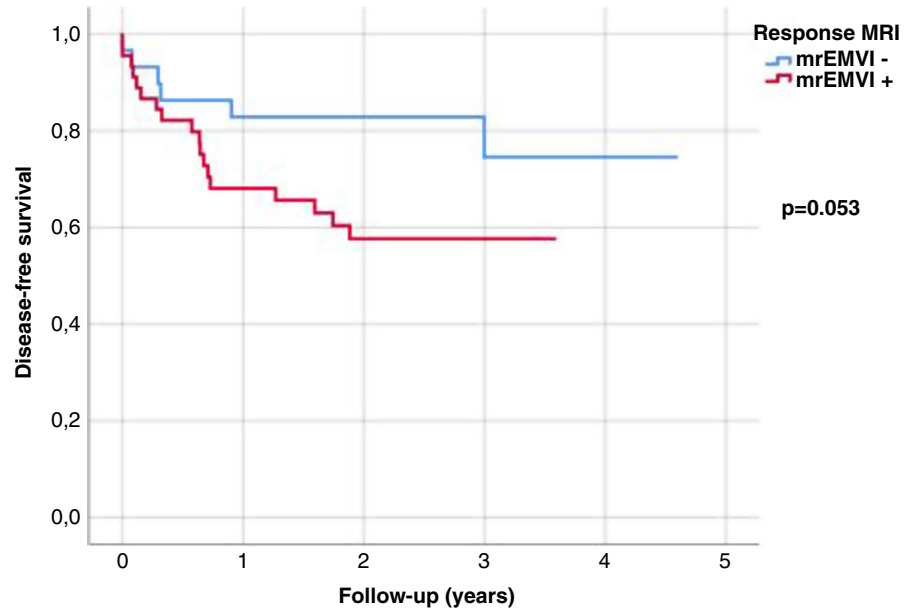
3 patient's emvi-data missing and not included in the Kaplan Meier analysis

DISCUSSION AND CONCLUSIONS

In this study clarifying the prognostic significance of preoperative MRI in 635 consecutive rectal cancer patients treated with curative intent, mrEMVI+ was a risk factor associated with poorer DFS, but not for

local recurrence. In univariate analysis, mrEMVI+ was also a risk factor for DSS. Statistical significance was not reached in multivariate analysis, most probably depending on the relatively short follow-up time. During the follow-up time, 3.9% of the patients had local recurrence and 15.6% developed metachronous distant metastases.

FIGURE 3 Disease-free survival of patients who turned mrEMVI-negative in response MRI



No of cases remaining:

mrEMVI-	30	24	23	9	2	0
mrEMVI+	45	28	19	3	0	0

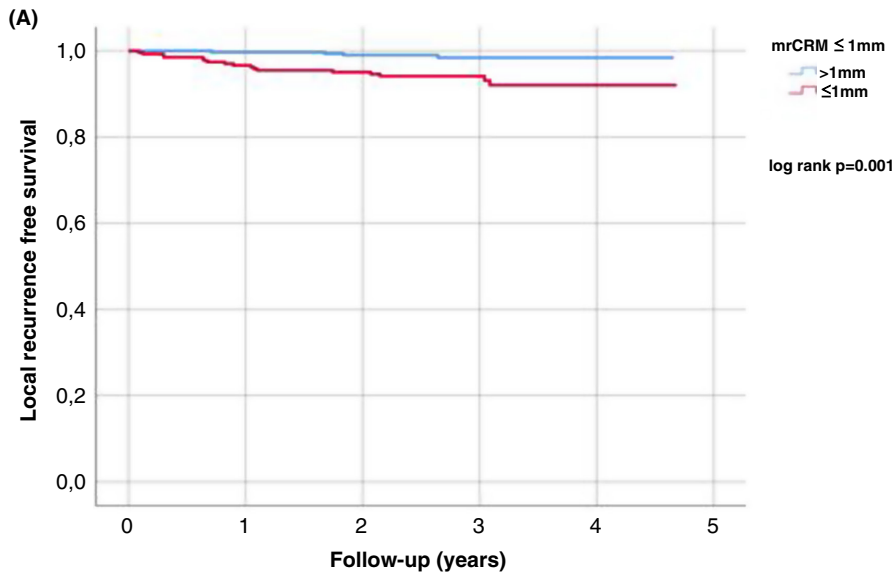
Centralization of rectal cancer treatment, and at the same time the adoption of multidisciplinary teams in planning the therapy of each individual rectal cancer patient, along with a high quality TME technique [25,26], has resulted in a decreasing number of local recurrences [8,9]. Perhaps the most important single tool in this pre-operative evaluation has been rectal MRI and especially dedicated gastrointestinal radiologists interpreting it. MRI has been proven to be quite precise in estimating CRM [17,20,21] and therefore in guidance to choosing long-course CRT in order to down-size the tumour. Before the introduction and adoption of the TME technique mesenteric nodal positivity seemed to be a risk factor for local recurrence [3,27], most probably because of leaving part of the mesentery behind during surgery. Since then, nodal positivity seen in rectal MRI has been an indicator for the recommendation of neoadjuvant RT in many rectal cancer centres. However, the evaluation of nodal positivity in rectal MRI is not that accurate [28], notably not in so-called good T3 tumours, leading to overtreatment with RT. In these tumours, about 4% local recurrence rates have been achieved with meticulous TME alone [4]. It is also worth considering that the benefit of adjuvant therapy in stage III rectal cancer is far less clear than in colon cancer, and the results are somewhat contradictory [29–31]. In the present study, nodal positivity in MRI was not a risk factor for decreased DSS or local recurrence. However, mrN+ was a risk factor for poorer DFS.

Lately, increasing attention has been paid to the possible prognostic significance of EMVI in rectal MRI [32], although it has not been used as an independent factor to guide the decision making in the guidelines for the time being. In our study, mrEMVI+ was a highly significant factor predicting poorer DFS and most of the recurrences appeared as distant metastases; just 1.7% of the patients had local recurrence only. The effect on DSS was seen in

univariate analysis but not in multivariate analysis. This may be due to the relatively short follow-up time. Previously, in patients treated with neoadjuvant CRT, post-CRT mrEMVI positivity has been reported to be the only significant MRI-related factor for DFS [33], which was also noticed in our study. The recurrences also appeared earlier in mrEMVI+ patients in our series, in line with earlier reports [34]. This suggests that there is a high risk of micrometastases already when mrEMVI+ is noticed. Accordingly, mrEMVI+ patients also develop synchronous metastases more frequently [32]. Obviously, this raises the question whether it is possible to decrease the risk of distant recurrence in mrEMVI+ patients with more comprehensive systemic neoadjuvant chemotherapy such as the total neoadjuvant chemotherapy approach [35]. No controlled studies using mrEMVI+ as an indicator for systemic neoadjuvant chemotherapy have been published but they are being conducted ([ClinicalTrials.gov](https://clinicaltrials.gov/ct2/show/study/NCT04842006) NCT04842006). The results of an observational open-label and non-comparative study in which patients were treated with neoadjuvant chemotherapy before surgery were not encouraging; 3-year DFS for mrEMVI+ patients was 44% versus 96% for mrEMVI- patients [36], which is an encouragement to improve the systemic control.

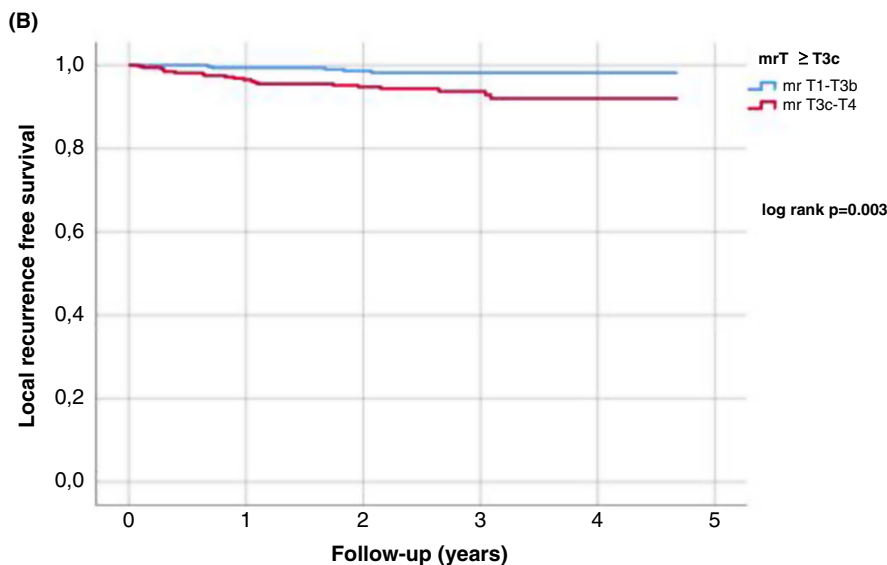
Only mrCRM ≤ 1 mm was a risk factor for local recurrence in our study, which follows the results of previous reports [37–39]. However, considering that over a third of the patients had mrCRM ≤ 1 mm in our study population, selective long-course CRT combined with extended surgery resulted in an acceptable 3.9% rate of local recurrence.

Retrospective study design and relatively short follow-up time concerning DFS and DSS are the limitations of our study. It is possible that, with longer follow-up time, in addition to mrEMVI also some other factors in MRI might have an influence on survival. For



No. remaining cases:

mrCRM $>1\text{mm}$	335	326	265	138	46	0
mrCRM $\leq 1\text{mm}$	278	252	212	99	38	0



No. remaining cases:

mrT1-T3b	306	297	240	120	42	0
mrT3c-T4	327	294	244	120	43	0

example, tumour deposits, which seem to be an interesting prognostic factor [40], were not comprehensively mentioned in the radiology reports in the time period of our study. On the other hand, the strength of the study lies in the number of patients analysed ($n = 635$) and especially the number of mrEMVI+ patients ($n = 128$). Moreover, all the patients were evaluated and treated in one tertiary high-volume centre.

In conclusion, mrCRM $\leq 1\text{mm}$ is a risk factor for local recurrence in rectal cancer, but the risk is quite well controlled with neoadjuvant (chemo)radiotherapy and extended surgery. In contrast, mrEMVI+ is a significant risk factor associated with poorer DFS after curative rectal cancer surgery and new tools to mitigate the systemic recurrence risk are needed.

FIGURE 4 (A) Local recurrence and mrCRM, (B) Local recurrence and mrT-class

FUNDING INFORMATION

The study received no external funding.

ETHICAL APPROVAL

The study was approved by the hospitals ethical board.

AUTHOR CONTRIBUTION

All authors contributed to the writing, analyzing or design of the study.

DATA AVAILABILITY STATEMENT

The data that support the findings of this study are available from the corresponding author upon reasonable request.



ORCID

Taru M. Lehtonen  <https://orcid.org/0000-0001-7816-0870>

Laura E. Koskenvuo  <https://orcid.org/0000-0001-8335-7942>

REFERENCES

- Pitkaniemi J, Malila N, Virtanen A, Degerlund H, Heikkinen S, Seppä K. Cancer in Finland 2018. Cancer Society of Finland; 2020. Publication No.94. Available from: <https://syoparekisteri.fi>. Accessed 27 May 2020.
- Sebag-Montefiore D, Stephens RJ, Steele R, Monson J, Grieve R, Khanna S, et al. Preoperative radiotherapy versus selective postoperative chemoradiotherapy in patients with rectal cancer (MRC CR07 and NCIC-CTG C016): a multicentre, randomised trial. *Lancet*. 2009;373(9666):811–20. [https://doi.org/10.1016/S0140-6736\(09\)60484-0](https://doi.org/10.1016/S0140-6736(09)60484-0)
- Folkesson J, Birgisson H, Pahlman L, Cedermark B, Glimelius B, Gunnarsson U. Swedish rectal cancer trial: long lasting benefits from radiotherapy on survival and local recurrence rate. *JCO*. 2005;23(24):5644–50. <https://doi.org/10.1200/JCO.2005.08.144>
- Heald RJ, Ryall RDH. Recurrence and survival after total mesorectal excision for rectal cancer. *Lancet*. 1986;327(8496):1479–82. [https://doi.org/10.1016/S0140-6736\(86\)91510-2](https://doi.org/10.1016/S0140-6736(86)91510-2)
- Holm T, Ljung A, Häggmark T, Jurell G, Lagergren J. Extended abdominoperineal resection with gluteus maximus flap reconstruction of the pelvic floor for rectal cancer. *Br J Surg*. 2007;94(2):232–8. <https://doi.org/10.1002/bjs.5489>
- Ma B, Gao P, Wang H, Xu Q, Song Y, Huang X, et al. What has preoperative radio(chemo)therapy brought to localized rectal cancer patients in terms of perioperative and long-term outcomes over the past decades? A systematic review and meta-analysis based on 41,121 patients. *Int J Cancer*. 2017;141(5):1052. <https://doi.org/10.1002/ijc.30805>
- Fleming FJ, Pahlman L, Monson JRT. Neoadjuvant therapy in rectal cancer. *Dis Colon Rectum*. 2011;54(7):901–12. <https://doi.org/10.1007/DCR.0b013e31820eeb37>
- Gietelink L, Henneman D, van Leersum NJ, de Noo M, Manusama E, Tanis PJ, et al. The influence of hospital volume on circumferential resection margin involvement: results of the Dutch surgical colorectal audit. *Ann Surg*. 2016;263(4):745–50. <https://doi.org/10.1097/SLA.0000000000001009>
- Archampong D, Borowski D, Wille-Jørgensen P, Iversen LH. Workload and surgeon's specialty for outcome after colorectal cancer surgery. *Cochrane Database Syst Rev*. 2012;(3):CD005391. <https://doi.org/10.1002/14651858.CD005391.pub3>
- Petersen VC, Baxter KJ, Love SB, Shepherd NA. Identification of objective pathological prognostic determinants and models of prognosis in Dukes' B colon cancer. *Gut*. 2002;51(1):65. <https://doi.org/10.1136/gut.51.1.65>
- Roxburgh CSD, McMillan DC, Richards CH, Atwan M, Anderson JH, Harvey T, et al. The clinical utility of the combination of T stage and venous invasion to predict survival in patients undergoing surgery for colorectal cancer. *Ann Surg*. 2014;259(6):1156–65. <https://doi.org/10.1097/SLA.0000000000000229>
- Räsänen M, Carpelan-Holmström M, Mustonen H, Renkonen-Sinisalo L, Lepistö A. Pattern of rectal cancer recurrence after curative surgery. *Int J Colorectal Dis*. 2015;30(6):775–85. <https://doi.org/10.1007/s00384-015-2182-1>
- Giesen LJX, Borstlap WAA, Bemelman WA, Tanis PJ, Verhoef C, Olthof PB. Effect of understaging on local recurrence of rectal cancer. *J Surg Oncol*. 2020;122(6):1179–86. <https://doi.org/10.1002/jso.26111>
- Patel A, Green N, Sarmah P, Langman G, Chandrakumaran K, Youssef H. The clinical significance of a pathologically positive lymph node at the circumferential resection margin in rectal cancer. *Tech Coloproctol*. 2019;23(2):151–9. <https://doi.org/10.1007/s10151-019-01947-6>
- Räsänen M, Renkonen-Sinisalo L, Mustonen H, Lepistö A. Is there a need for neoadjuvant short-course radiotherapy in T3 rectal cancer with positive lymph node involvement? A single-center retrospective cohort study. *World J Surg Onc*. 2019;17(1):139. <https://doi.org/10.1186/s12957-019-1670-0>
- MERCURY Study Group. Diagnostic accuracy of preoperative magnetic resonance imaging in predicting curative resection of rectal cancer: prospective observational study. *BMJ*. 2006;333(7572):779–82. <https://doi.org/10.1136/bmj.38937.646400.55>
- Battersby NJ, How P, Moran B, Stelzner S, West NP, Branagan G, et al. Prospective validation of a low rectal cancer magnetic resonance imaging staging system and development of a local recurrence risk stratification model: the MERCURY II study. *Ann Surg*. 2016;263(4):751–60. <https://doi.org/10.1097/SLA.0000000000001193>
- Sohn B, Lim J-S, Kim H, Myoung S, Choi J, Kim NK, et al. MRI-detected extramural vascular invasion is an independent prognostic factor for synchronous metastasis in patients with rectal cancer. *Eur Radiol*. 2015;25(5):1347–55. <https://doi.org/10.1007/s00330-014-3527-9>
- Chand M, Evans J, Swift RI, Tekkis PP, West NP, Stamp G, et al. The prognostic significance of postchemoradiotherapy high-resolution MRI and histopathology detected extramural venous invasion in rectal cancer. *Ann Surg*. 2015;261(3):473–9. <https://doi.org/10.1097/SLA.0000000000000848>
- Beets-Tan RGH, Lambregts DMJ, Maas M, Bipat S, Barbaro B, Curvo-Semedo L, et al. Magnetic resonance imaging for clinical management of rectal cancer: updated recommendations from the 2016 European Society of Gastrointestinal and Abdominal Radiology (ESGAR) consensus meeting. *Eur Radiol*. 2018;28(4):1465–75. <https://doi.org/10.1007/s00330-017-5026-2>
- Brown G, Radcliffe AG, Newcombe RG, Dallimore NS, Bourne MW, Williams GT. Preoperative assessment of prognostic factors in rectal cancer using high-resolution magnetic resonance imaging. *Br J Surg*. 2003;90(3):355–64. <https://doi.org/10.1002/bjs.4034>
- Balyasnikova S, Brown G. Imaging advances in colorectal cancer. *Curr Colorectal Cancer Rep*. 2016;12(3):162. <https://doi.org/10.1007/s11888-016-0321-x>
- Bosman FT, Carneiro F, Hruban RH, Theise ND. WHO classification of tumours of the digestive system. Geneva, Switzerland: World Health Organization; 2010.
- Dworak O, Keilholz L, Hoffmann A. Pathological features of rectal cancer after preoperative radiochemotherapy. *Int J Colorectal Dis*. 1997;12:19–23.
- MacFarlane JK, Ryall RD, Heald RJ. Mesorectal excision for rectal cancer. *Lancet*. 1993;341(8843):457–60. [https://doi.org/10.1016/0140-6736\(93\)90207-W](https://doi.org/10.1016/0140-6736(93)90207-W)
- Heald RJ, Husband EM, Ryall RD. The mesorectum in rectal cancer surgery—the clue to pelvic recurrence? *Br J Surg*. 1982;69(10):613–6. <https://doi.org/10.1002/bjs.1800691019>
- Swedish Rectal Cancer Trial, Cedermark B, Dahlberg M, Glimelius B, Pahlman L, Rutqvist LE, et al. Improved survival with preoperative radiotherapy in resectable rectal cancer. *N Engl J Med*. 1997;336(14):980–7. <https://doi.org/10.1056/NEJM199704033361402>
- Taylor FGM, Quirke P, Heald RJ, Moran B, Blomqvist L, Swift I, et al. Preoperative high-resolution magnetic resonance imaging can identify good prognosis stage I, II, and III rectal cancer best managed by surgery alone: a prospective, multicenter, European study. *Ann Surg*. 2011;253(4):711–9. <https://doi.org/10.1097/SLA.0b013e31820b8d52>
- Breugom AJ, Swets M, Bosset J-F, Collette L, Sainato A, Cionini L, et al. Adjuvant chemotherapy after preoperative (chemo)

- radiotherapy and surgery for patients with rectal cancer: a systematic review and meta-analysis of individual patient data. *Lancet Oncol.* 2015;16(2):200–7. [https://doi.org/10.1016/S1470-2045\(14\)71199-4](https://doi.org/10.1016/S1470-2045(14)71199-4)
30. Bujko K, Glimelius B, Valentini V, Michalski W, Spalek M. Postoperative chemotherapy in patients with rectal cancer receiving preoperative radio(chemo)therapy: a meta-analysis of randomized trials comparing surgery +/- a fluoropyrimidine and surgery + a fluoropyrimidine +/- oxaliplatin. *Eur J Surg Oncol.* 2015;41(6):713–23. <https://doi.org/10.1016/j.ejso.2015.03.233>
 31. Hong YS, Nam B-H, Kim K-P, Kim JE, Park SJ, Park YS, et al. Oxaliplatin, fluorouracil, and leucovorin versus fluorouracil and leucovorin as adjuvant chemotherapy for locally advanced rectal cancer after preoperative chemoradiotherapy (ADORE): an open-label, multicentre, phase 2, randomised controlled trial. *Lancet Oncol.* 2014;15(11):1245–53. [https://doi.org/10.1016/S1470-2045\(14\)70377-8](https://doi.org/10.1016/S1470-2045(14)70377-8)
 32. Siddiqui MRS, Simillis C, Hunter C, Chand M, Bhoday J, Garant A, et al. A meta-analysis comparing the risk of metastases in patients with rectal cancer and MRI-detected extramural vascular invasion (mrEMVI) vs mrEMVI-negative cases. *Br J Cancer.* 2017;116(12):1513. <https://doi.org/10.1038/bjc.2017.99>
 33. Lee ES, Kim MJ, Park SC, Hur BY, Hyun JH, Chang HJ, et al. Magnetic resonance imaging-detected extramural venous invasion in rectal cancer before and after preoperative chemoradiotherapy: diagnostic performance and prognostic significance. *Eur Radiol.* 2018;28(2):496–505. <https://doi.org/10.1007/s00330-017-4978-6>
 34. Kim YC, Kim JK, Kim MJ, Lee JH, Kim YB, Shin SJ. Feasibility of mesorectal vascular invasion in predicting early distant metastasis in patients with stage T3 rectal cancer based on rectal MRI. *Eur Radiol.* 2016;26(2):297–305. <https://doi.org/10.1007/s00330-015-3837-6>
 35. Bahadoer RR, Dijkstra EA, van Etten B, Marijnen CAM, Putter H, Kranenbarg EM, et al., Short-course radiotherapy followed by chemotherapy before total mesorectal excision (TME) versus preoperative chemoradiotherapy, TME, and optional adjuvant chemotherapy in locally advanced rectal cancer (RAPIDO): a randomised, open-label, phase 3 trial. *Lancet Oncol.* 2021;22(1):29–42. [https://doi.org/10.1016/S1470-2045\(20\)30555-6](https://doi.org/10.1016/S1470-2045(20)30555-6). Epub 2020 Dec7. Erratum in: *Lancet Oncol.* 2021 Feb;22(2):e42. PMID: 33301740.
 36. Patel UB, Brown G, Machado I, Santos-Cores J, Pericay C, Ballesteros E, et al. MRI assessment and outcomes in patients receiving neoadjuvant chemotherapy only for primary rectal cancer: long-term results from the GEMCAD 0801 trial. *Ann Oncol.* 2017;28(2):344–53. <https://doi.org/10.1093/annonc/mdw616>
 37. Zhang X-Y, Wang S, Li X-T, Wang Y-P, Shi Y-J, Wang L, et al. MRI of extramural venous invasion in locally advanced rectal cancer: relationship to tumor recurrence and overall survival. *Radiology.* 2018;289(3):677–85. <https://doi.org/10.1148/radiol.2018172889>
 38. Taylor FGM, Quirke P, Heald RJ, Moran B, Blomqvist L, Swift I, et al. One millimetre is the safe cut-off for magnetic resonance imaging prediction of surgical margin status in rectal cancer. *Br J Surg.* 2011;98(6):872–9. <https://doi.org/10.1002/bjs.7458>
 39. Taylor FGM, Quirke P, Heald RJ, Moran BJ, Blomqvist L, Swift IR, et al. Preoperative magnetic resonance imaging assessment of circumferential resection margin predicts disease-free survival and local recurrence: 5-year follow-up results of the MERCURY study. *J Clin Oncol.* 2014;32(1):34–43. <https://doi.org/10.1200/JCO.2012.45.3258>
 40. Lord AC, D'Souza N, Shaw A, Rokan Z, Moran B, Abulafi M, et al. MRI-diagnosed tumour deposits and EMVI status have superior prognostic accuracy to current clinical TNM staging in rectal cancer. *Ann Surg.* 2020. Online ahead of print. <https://doi.org/10.1097/SLA.0000000000004499>

How to cite this article: Lehtonen TM, Koskenvuo LE, Seppälä TT, Lepistö AH. The prognostic value of extramural venous invasion in preoperative MRI of rectal cancer patients. *Colorectal Dis.* 2022;24:737–746. <https://doi.org/10.1111/codi.16103>