



# A *Lactobacillus*-Deficient Vaginal Microbiota Dominates Postpartum Women in Rural Malawi

✉ Ronan Doyle,<sup>a,f</sup> Austridia Gondwe,<sup>b</sup> Yue-Mei Fan,<sup>c</sup> Kenneth Maleta,<sup>d</sup> Per Ashorn,<sup>b,e</sup> Nigel Klein,<sup>a</sup> Kathryn Harris<sup>f</sup>

<sup>a</sup>Institute of Child Health, University College London, London, United Kingdom

<sup>b</sup>Department for International Health, University of Tampere School of Medicine, Tampere, Finland

<sup>c</sup>Center for Child Health Research, University of Tampere School of Medicine and Tampere University Hospital, Tampere, Finland

<sup>d</sup>Department of Pathology, University of Malawi College of Medicine, Blantyre, Malawi

<sup>e</sup>Department of Paediatrics, University of Tampere School of Medicine, Tampere, Finland

<sup>f</sup>Department of Microbiology, Virology and Infection Control, Great Ormond Street Hospital NHS Foundation Trust, London, United Kingdom

**ABSTRACT** The bacterial community found in the vagina is an important determinant of a woman's health and disease status. A healthy vaginal microbiota is associated with low species richness and a high proportion of one of a number of different *Lactobacillus* spp. When disrupted, the resulting abnormal vaginal microbiota is associated with a number of disease states and poor pregnancy outcomes. Studies up until now have concentrated on relatively small numbers of American and European populations that may not capture the full complexity of the community or adequately predict what constitutes a healthy microbiota in all populations. In this study, we sampled and characterized the vaginal microbiota found on vaginal swabs taken postpartum from a cohort of 1,107 women in rural Malawi. We found a population dominated by *Gardnerella vaginalis* and devoid of the most common vaginal *Lactobacillus* species, even if the vagina was sampled over a year postpartum. This *Lactobacillus*-deficient anaerobic community, commonly labeled community state type (CST) 4, could be subdivided into four further communities. A *Lactobacillus iners*-dominated vaginal microbiota became more common the longer after delivery the vagina was sampled, but *G. vaginalis* remained the dominant organism. These results outline the difficulty in all-encompassing definitions of what a healthy or abnormal postpartum vaginal microbiota is. Previous identification of community state types and associations among bacterial species, bacterial vaginosis, and adverse birth outcomes may not represent the complex heterogeneity of the microbiota present. (This study has been registered at ClinicalTrials.gov as NCT01239693.)

**IMPORTANCE** A bacterial community in the vaginal tract is dominated by a small number of *Lactobacillus* species, and when not present there is an increased incidence of inflammatory conditions and adverse birth outcomes. A switch to a vaginal bacterial community lacking in *Lactobacillus* species is common after pregnancy. In this study, we characterized the postpartum vaginal bacterial community of a large group of women from a resource-poor, undersampled population in rural Malawi. The majority of women were found to have a *Lactobacillus*-deficient community, and even when sampled a year after delivery the majority of women still did not have *Lactobacillus* present in their vaginal microbiota. The effect of becoming pregnant again for those who do not revert to a *Lactobacillus*-dominant community is unknown, and this could suggest that not all *Lactobacillus*-deficient community structures are adverse. A better understanding of this complex community state type is needed.

Received 28 September 2017 Accepted 29 December 2017

Accepted manuscript posted online 5 January 2018

**Citation** Doyle R, Gondwe A, Fan Y-M, Maleta K, Ashorn P, Klein N, Harris K. 2018. A *Lactobacillus*-deficient vaginal microbiota dominates postpartum women in rural Malawi. Appl Environ Microbiol 84:e02150-17. <https://doi.org/10.1128/AEM.02150-17>.

**Editor** Edward G. Dudley, The Pennsylvania State University

**Copyright** © 2018 Doyle et al. This is an open-access article distributed under the terms of the [Creative Commons Attribution 4.0 International license](https://creativecommons.org/licenses/by/4.0/).

Address correspondence to Ronan Doyle, [ronan.doyle@gosh.nhs.uk](mailto:ronan.doyle@gosh.nhs.uk).

N.K. and K.H. contributed equally to this article.

**KEYWORDS** 16S rRNA gene, *Gardnerella vaginalis*, *Lactobacillus* spp., postpartum, sub-Saharan Africa, vaginal microbiota

Healthy vaginal community states have been defined as being dominated by a number of different *Lactobacillus* species (1). Previous studies have found that individuals lacking an abundance of lactobacilli are more likely to develop other conditions, such as bacterial vaginosis (BV) or aerobic vaginitis (AV), leading to an increased risk in transmission of sexually transmitted infections (2) and, if pregnant, premature delivery (3). BV is defined by an overabundance of anaerobic organisms, such as *Gardnerella vaginalis*, *Prevotella* spp., and *Bacteroides* spp. (4), and has previously been identified by a change in vaginal pH, vaginal discharge, and a fishy odor. AV is defined by a *Lactobacillus* species-deficient community and an overabundance of aerobic bacteria, such as *Escherichia coli*, *Staphylococcus* spp., and group B *Streptococcus* (GBS) spp. (5).

The incidence of a vaginal microbiota lacking *Lactobacillus* spp. during pregnancy has been associated with adverse birth outcomes, in particular that of preterm birth (6–10). Vaginal microbiota can also undergo extensive shifts postpartum (3, 11). Incidence of preterm birth is highest in low-income countries, such as Malawi (12), and while there are many risk factors involved, infection has been estimated as the probable cause of preterm birth in 25 to 40% of cases, with ascending infection from the vagina through the cervix as the potential source of organisms invading maternal and fetal tissues (13). Many of the organisms historically recovered from intrauterine infections are also commonly found in the genital tract (14), and the presence of these organisms postpartum is associated with a higher risk of developing infections (15).

Previous work has used scoring of Gram stains to diagnose BV (16), but recent studies have utilized molecular techniques focusing on the amplification of the 16S rRNA genes to compare with these scores and elucidate multiple community state types (CSTs). These include whether the vaginal microbiota is dominated by *Lactobacillus crispatus* (CST 1), *Lactobacillus gasseri* (CST 2), *Lactobacillus iners* (CST 3), or *Lactobacillus jensenii* (CST 5). Those communities that are *Lactobacillus* species-deficient have been grouped as CST 4 (1, 17). There have been comparatively more 16S rRNA gene high-throughput vaginal microbiota studies focusing on Caucasian cohorts in the United States and Europe than studies focusing on sub-Saharan African populations. The findings from these studies may not be immediately translatable, given the evidence that ethnicity influences the composition of the vaginal microbiota (18). While high estimates of the prevalence of BV in Malawi have been made (19), no attempt so far has been made to characterize the majority of the bacteria involved.

The aim of this study was to characterize the vaginal microbiota of a large cohort of women in rural Malawi using 16S rRNA gene sequencing. We wanted to expand the current knowledge base for the community structure of the vaginal microbiota in a low-income African setting and whether this structure alters over time postpartum. We also wanted to study the correlation between vaginal microbiota and birth outcomes that continues postpartum.

## RESULTS

**Sample collection.** Starting in February 2011, a total of 1,391 pregnant women were recruited into the iLiNS-DYAD-M trial, with the last delivery taking place in February 2013. A single vaginal mucus swab sample was taken from each participant approximately 1 week postpartum, and a vaginal microbiota was characterized in 1,107 (79.6%) participants. Of those excluded, 222 were lost to follow-up, 11 were excluded due to twin deliveries, and 51 failed sequencing (Fig. 1). Participants who were included in this substudy were older (25 years versus 24 years;  $P = 0.025$ ), had completed less time in education (3.9 years versus 4.5 years;  $P = 0.049$ ), had a lower proxy for socioeconomic status (37) ( $-0.05$  versus  $0.30$ ;  $P < 0.001$ ), and were more likely to be primiparous (first pregnancy; 29.6% versus 20.1%;  $P = 0.001$ ) than those excluded from

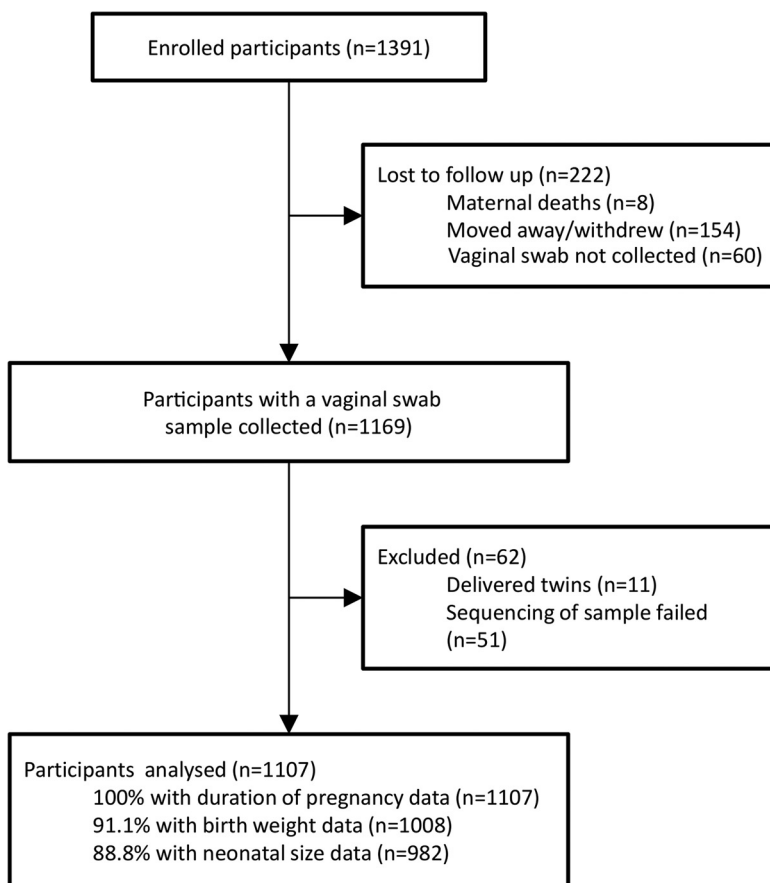


FIG 1 Study participant flow diagram.

the analyses (Table 1). We sequenced 1,107 samples from individual participants, and filtering for quality and error allowed analysis at a median depth of 14,585 reads per sample (interquartile range [IQR], 7,986 to 21,659) from 18,661,136 reads across the entire cohort. After sequence filtering steps, 994 participant samples had sufficient sequence depth to be taken forward for analysis.

**The vaginal microbiota of rural Malawian women after pregnancy is dominated by *Gardnerella vaginalis*, with limited numbers of *Lactobacillus* spp.** We found that *Gardnerella vaginalis* was the most common organism recovered from participants' vaginal swabs (Fig. 2). It was prevalent in 75.7% (752/994) of participants and was the only operational taxonomic unit (OTU) found in more than 50% of

TABLE 1 Baseline characteristics of the included and excluded participants ( $n = 1,391$ )

Characteristic <sup>a</sup>	Included ( $n = 1,107$ )	Excluded ( $n = 284$ )	<i>P</i> value <sup>b</sup>
Mean (SD) BMI (kg/m <sup>2</sup> )	22.1 (2.8)	22.4 (2.9)	0.126
Mean (SD) maternal age (yrs)	25.1 (6.1)	24.2 (6.6)	0.025
Mean (SD) maternal education, completed years of school (yrs)	3.9 (3.4)	4.5 (3.7)	0.049
Mean (SD) socioeconomic score	-0.05 (0.9)	0.30 (1.1)	<0.001
Proportion of primiparous women (%)	29.6	20.1	0.001
Proportion of women with a low BMI (%) <sup>c</sup>	4.1	5.7	0.367
Proportion of women with a positive HIV test (%)	12.2	13.9	0.591
Proportion of women with a positive malaria test (RDT) (%)	22.4	23.5	0.749

<sup>a</sup>SD, standard deviation; BMI, body-mass index; RDT, rapid diagnostic test.

<sup>b</sup>*P* value obtained from ANOVA (comparison of means) or Fisher's exact test (comparison of proportions).

<sup>c</sup>A low BMI was defined as <18.5 kg/m<sup>2</sup>.

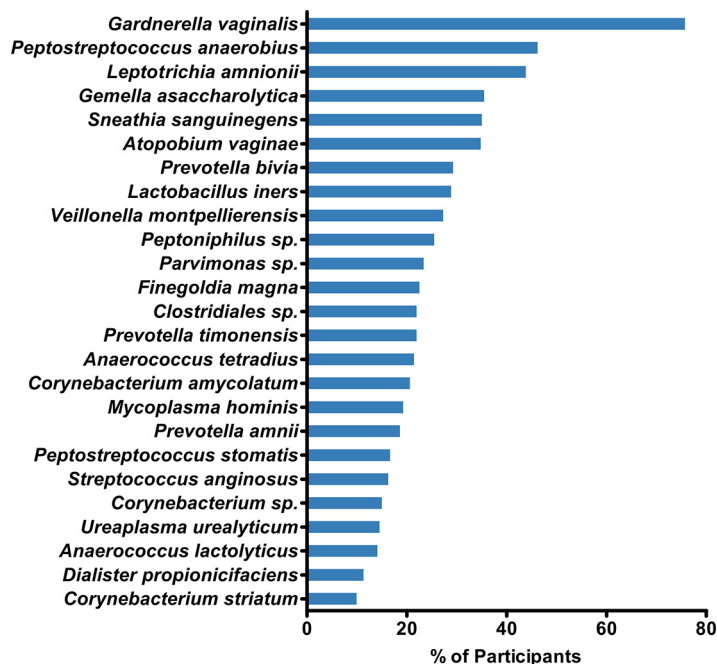
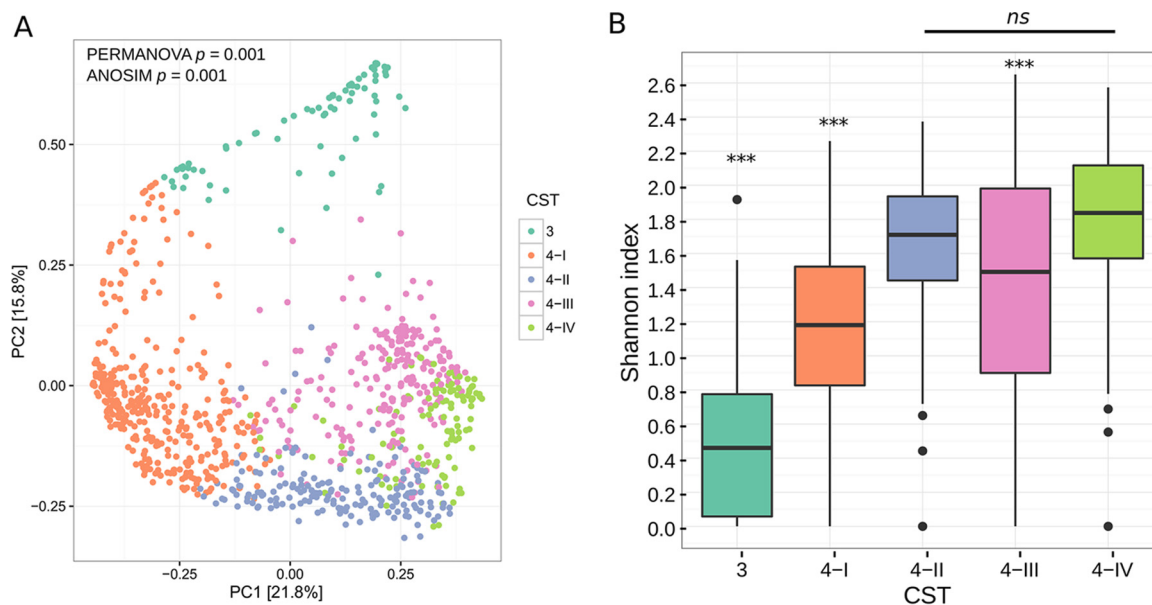


FIG 2 The 25 most prevalent OTUs recovered from participants' vaginal swab samples ( $n = 994$ ).

individuals. In contrast, *Lactobacillus* spp. were found in the vaginal microbiota of just 27.1% (269/994) of participants. When lactobacilli were present they were characterized by sequence identity as almost universally *Lactobacillus iners*, with low prevalence and proportions of *Lactobacillus crispatus*. Neither *Lactobacillus gasseri* nor *Lactobacillus jensenii* was identified in any sample.

**Identification of subtypes in community state type 4.** To elucidate possible similarities in vaginal microbiota community structure between groups of participants, we calculated Bray-Curtis distances across the entire population. We carried out *de novo* clustering on 994 individuals based on the similarity of their microbiota and found that participants separated into five community states (Fig. 3A).

The vaginal microbiota of one cluster of participants dominated by *Lactobacillus iners* was found to be similar to community state type 3 (CST 3) in previous studies (Fig. 4). This was also confirmed when comparing the CST 3 Shannon index to those of the other groups, with CST 3 having a statistically significantly lower Shannon index than all of the CST 4 groups (Fig. 3B). The majority of the other participants had a lactobacillus-deficient community that was instead dominated by bacteria similar to those in the previously studied CST 4. In this study, CST 4 clustered into three more subgroups that were defined by having a high relative abundance of *Gardnerella vaginalis* (CST 4-I), *Leptotrichia amnionii* (CST 4-II), or *Peptostreptococcus anaerobius* (CST 4-IV) or as another group that was not dominated by a single OTU but instead had high abundances of *Prevotella* spp., *Gemella* spp., and *Corynebacterium* spp. (CST 4-III) (Fig. 4). Although there was some crossover, these clusters were confirmed as statistically significantly different from each other by both permutational multivariate analysis of variance (PERMANOVA) ( $F$  statistic = 159.7;  $P < 0.001$ ) and analysis of similarity (ANOSIM) ( $R = 0.68$ ;  $P < 0.001$ ) tests (Fig. 3A). Both CST 4-I and 4-II also shared many of the same minor OTUs in their communities, such as *Gemella asaccharolytica*, *Prevotella bivia*, *Veillonella montpellierensis*, *Atopobium vaginae*, *Clostridiales* sp., and *Prevotella amnii*. In addition, CST 4-III and 4-IV both had minor OTUs present that were not found in the majority of CST 4-I and 4-II samples, such as *Corynebacterium amycolatum*, *Fingoldia magna*, *Peptoniphilus* sp., *Staphylococcus aureus*, and *Peptostreptococcus stomatis*. All the CST 4 subtypes had alpha diversities significantly different from one another, apart from the two groups with the highest Shannon index values, CST 4-II and



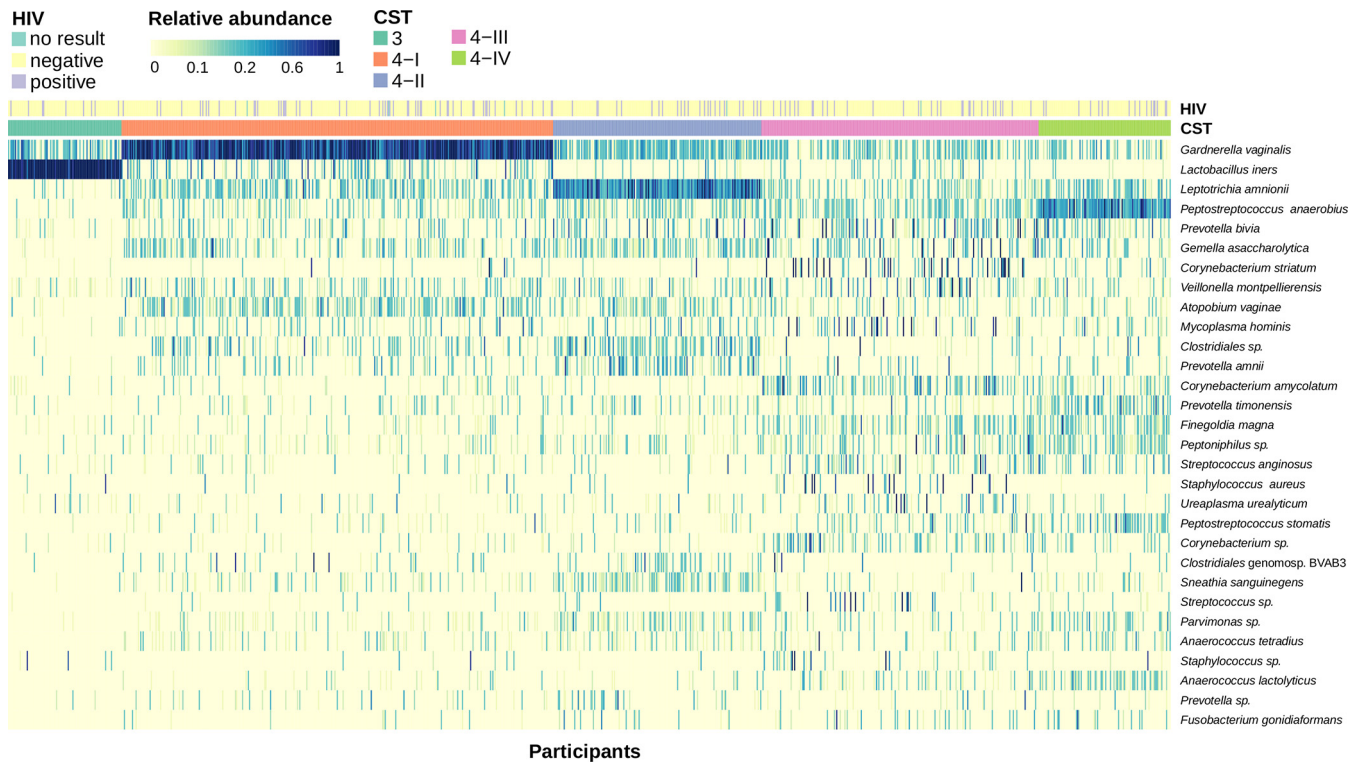
**FIG 3** (A) Principal-coordinate analysis of Bray-Curtis distances comparing presence of OTUs in participants' vaginal swab samples. Participants are colored based on *de novo* clustering by the shared presence of OTUs ( $n = 994$ ). (B) Box-and-whisker plot of the distribution of OTU richness. OTU richness was measured among all five CSTs using the Shannon index. Three asterisks (\*\*\*) above a CST indicate that the difference between it and all other groups was statistically significant ( $P < 0.0001$ ) as determined by Student's *t* test (false discovery rate [FDR]-corrected), and *ns* indicates there was no statistically significant difference between the Shannon index values in CST 4-II and CST 4-IV.

CST 4-IV (Fig. 3B). CST 4-II had the lowest Shannon index value of the CST 4 subtypes, with a population more likely to consist entirely of *Gardnerella vaginalis*. Interestingly, we found that although CST 4-III was not dominated by a single OTU like the other groups, it still had a lower Shannon index value than both CST 4-II and CST 4-IV.

**Vaginal microbiota composition varies based on time after delivery.** The majority of samples collected in this study were taken from participants less than 20 days after delivery, and some were sampled long after delivery (full range, 5 to 583 days; Fig. 5A). To visualize the possible association between time postpartum and the microbiota present, we binned participants based on how long after delivery they were sampled (Fig. 5B). The proportion of participants defined as CST 3 was low in those sampled less than 20 days after delivery, but CST 3 was the second most abundant CST in samples collected more than 200 days after delivery. This corresponded with a relative decrease in the proportion of participants defined as CST 4-II, 4-III, and 4-IV in samples collected more than 200 days after delivery. We also compared the relative abundances of *L. iners* in participants grouped by how many days after delivery the sample was taken, and as expected, found relative abundance increased as more participants were defined as CST 3. The two other CST-defining bacteria, *L. amnionii* and *P. anaerobius*, were both found to decrease in abundance over time and were almost absent from samples taken more than 200 days after delivery (Fig. 5C). Bacteria associated with CST 4-I remained the most dominant community members in all participants, regardless of the time after delivery the vagina was sampled, and *G. vaginalis* remained the dominant organism seen in the vaginal microbiota even over a year postpartum (Fig. 5C).

**Other factors influencing vaginal microbial composition.** A total of 13.9% (138/994) of individuals in this study were HIV positive. We annotated the heat map in Fig. 4 with an individual's HIV status to compare the possible association of HIV status with microbial composition, and we also tried to determine whether HIV status correlated with the clusters generated using the Bray-Curtis dissimilarity matrix (see Fig. S1 in the supplemental material). HIV infection did not explain the observed structure of vaginal OTUs among participants. However, differential abundances between OTUs in HIV-negative and HIV-positive participants identified using log-binomial regression showed that the two greatest differences in OTU abundance were in *Mycoplasma hominis* and





**FIG 4** Heat map of the relative abundances of 30 OTUs ordered by CST. Each individual is annotated both by the given CST and by HIV status where information was available ( $n = 994$ ).

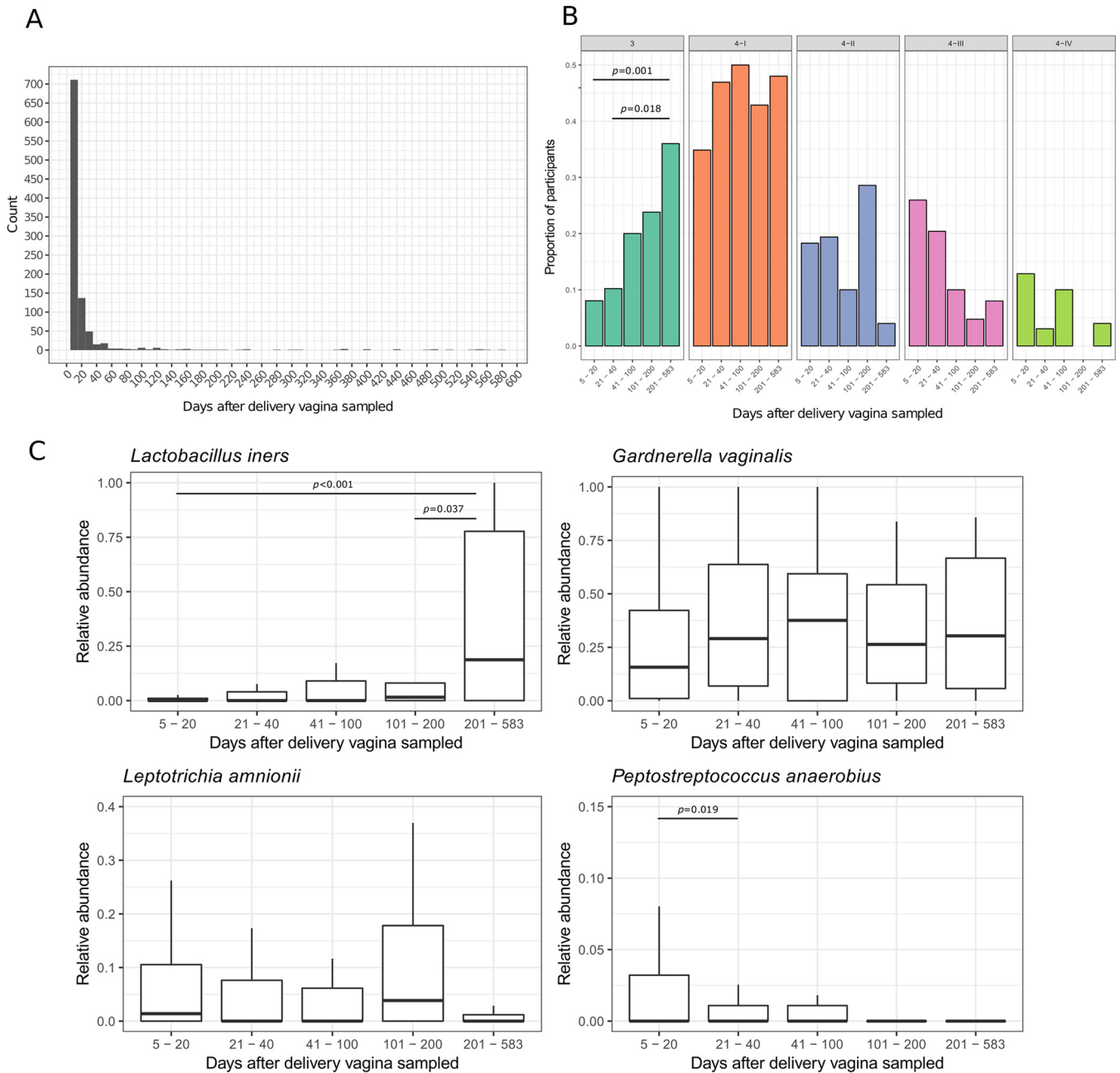
BVAB3, with log<sub>2</sub>-fold increases in abundance of 0.77 and 0.58 in HIV-positive and HIV-negative participants, respectively. Neither of these associations was statistically significant after adjusting for false discovery rate (FDR) ( $q$  value < 0.05).

We built ordination plots for other variables that we thought might have an influence on a woman's community composition. We compared participant age, body mass index (BMI), anemic status, presence of malarial infection, if the woman had recently delivered by C-section or vaginally, and geographic location (see Fig. S1 in the supplemental material). The sequencing runs were also compared to see whether processing certain samples together was causing similar profiles of contamination. None of these variables explained the majority of differences between CSTs.

**Association between adverse birth outcomes and the vaginal microbiota soon after delivery.** We wanted to test whether an association between vaginal microbiota and duration of pregnancy, birth weight, newborn length-for-age Z score (LAZ), and newborn head-circumference-for-age Z score (HCZ) remained postpartum. Due to the expected effect of the time after delivery the vagina was sampled, we stratified participants between those sampled on and before 20 days after delivery and those sampled after 20 days. Participants sampled less than 20 days after delivery and categorized as CST 4-IV had the lowest mean duration of pregnancy, lowest mean birth weight, lowest mean LAZ, and lowest mean HCZ. There was a statistically significantly lower mean duration of pregnancy and a statistically significantly lower mean LAZ for participants with vaginal microbiota categorized as CST 4-IV (Table 2). These associations were not seen in participants sampled more than 20 days postpartum (Table 2).

## DISCUSSION

In this study, we have characterized the vaginal microbiota of 994 women in southern Africa, which represents the largest cross-sectional study of its kind to date and one of the few studies in an African population (20–22). We have shown that a diverse microbial community deficient in *Lactobacillus* species dominated the



**FIG 5** (A) Histogram of the number of days after delivery that vaginal samples were collected. (B) The proportion of participants assigned to each CST stratified by how long after delivery samples were taken. Participants were binned into 5 groups: 5 to 20 days ( $n = 809$ ), 21 to 40 days ( $n = 98$ ), 41 to 100 days ( $n = 40$ ), 101 to 200 days ( $n = 21$ ), and 201 to 583 days ( $n = 26$ ).  $P$  values show where there was a significant pairwise comparison between groups as determined by Fisher's exact test (FDR-corrected). (C) Box-and-whisker plot showing the association between relative abundance of *L. iners*, *G. vaginalis*, *L. amnionii*, and *P. anaerobius* and how long after delivery the vagina was sampled.  $P$  values show where there was a significant pairwise comparison between groups as determined by Student's  $t$  test (FDR-corrected).

vaginal samples, that these communities clustered into four subgroups, and that a *Lactobacillus*-deficient microbiota was still the most common community type a year postpartum. An association between higher proportions of *P. anaerobius* postpartum and a shorter duration of pregnancy and delivery of smaller newborns was seen in those sampled soon after delivery.

The vaginal microbiota was previously represented by five CSTs (1, 3, 23); however, Gajer et al. also previously split CST 4 into two subtypes, 4-A and 4-B (17). CST 4-B was defined by higher abundances of *Atopobium* spp., *Parvimonas* spp., *Sneathia* spp., and

**TABLE 2** Outcomes by community state type and stratified by whether the sample was collected before 20 days postpartum

Outcome	n	Mean (SD) value according to CST					P value <sup>a</sup>
		3	4-I	4-II	4-III	4-IV	
Samples collected ≤20 days postpartum							
Duration of pregnancy (wks)	809	39.9 (1.7)	39.5 (1.8)	39.7 (1.5)	39.3 (1.8)	38.9 (2.6)	0.001
Birth wt (g)	762	3,092 (527)	2,984 (445)	2,967 (357)	3,011 (429)	2,916 (457)	0.154
Newborn length-for-age Z score	783	-0.8 (1.2)	-0.9 (1.1)	-1.0 (0.9)	-0.9 (1.1)	-1.3 (1.2)	0.037
Newborn head-circumference-for-age Z score	785	-0.0 (1.3)	-0.1 (1.1)	-0.1 (0.9)	-0.0 (1.0)	-0.3 (1.3)	0.246
Samples collected >20 days postpartum							
Duration of pregnancy (wks)	184	38.1 (3.4)	37.6 (5.2)	39.2 (2.5)	37.7 (5.9)	39.5 (2.1)	0.361
Birth wt (g)	141	2,740 (586)	2,931 (526)	2,800 (298)	2,914 (509)	2,870 (237)	0.483
Newborn length-for-age Z score	92	-0.9 (0.9)	-1.4 (1.3)	-1.5 (1.1)	-0.8 (0.9)	-1.9 (1.4)	0.251
Newborn head-circumference-for-age Z score	93	-0.4 (0.8)	-0.5 (1.2)	-0.2 (1.1)	-0.4 (0.9)	-0.1 (0.4)	0.903

<sup>a</sup>P values were calculated by linear regression. Models were adjusted for nutritional intervention, maternal BMI at enrollment, maternal age, proxy for socioeconomic status, number of previous pregnancies, maternal anemia at enrollment, and number of days after delivery that vaginal samples were collected.

*Gardnerella* spp., which resembled CST 4-I and 4-II in our study. These clustered separately in our study due to differing abundances of *Sneathia/Leptotrichia* spp. CST 4-A was differentiated based on higher abundances of *Peptoniphilus* spp., *Anaerococcus* spp., *Corynebacterium* spp., and *Fingoldia* spp. and resembled two subgroups in this study, CST 4-III and 4-IV.

The majority of studies previously undertaken to characterize the vaginal microbiota, especially postpartum, have examined Caucasian populations from the United States or Europe. Ethnicity, geographic location, and lifestyle all seem to contribute to changes in vaginal microbiota, but there is no conclusive evidence as to which is more influential. Regional microbiota differences have previously been established in gut microbiota studies (24); however, comparable data for the vagina from Africa have focused only on those with HIV or diagnosed BV (21, 22). Regional practices such as vaginal douching are common in Malawi (25). However, there is some disagreement on whether this can (26, 27) or cannot (22) alter the vaginal microbiota, and we do not have the required information to make the comparison in this study. Where differences between ethnic populations in the United States were studied, those of an African American ancestry were found to have greater prevalence of *Prevotella* spp., *Dialister* spp., *Atopobium* spp., *Gardnerella* spp., *Peptoniphilus* spp., *Sneathia sanguinegens*, *Aerococcus* spp., and *Fingoldia magna* and a decreased prevalence of *Lactobacillus* spp. compared to members of other ethnic groups without symptoms of BV (1, 18). Black women are on average more likely to be defined as CST 4 than as any other CST (17). Interestingly, many of those genera are found at a greater prevalence across this Malawian cohort than are *Lactobacillus* spp. In agreement with this study, when a *Lactobacillus* sp. was found in an African American cohort it was most likely to be *L. iners*.

Comparisons of results from studies using 16S rRNA gene sequencing to catalogue bacterial species found in vaginal samples can be misleading due to lack of standardization in methodologies used. There are many biases in the preparation of samples and analysis of data that can affect interpretation of the results (28), and comparisons of exact relative abundances between studies with different methods should be avoided. However, we have validated the robustness of our results with mock community data and so can have greater confidence that changes in relative abundances between samples are a reflection of what was in the original sample. The absence of *L. crispatus* and *L. gasseri* in our study is interesting, but could possibly be a technical artifact concerning the ability of primers targeting different 16S regions to amplify or differentiate various bacterial species. However, this primer set is used regularly in our clinical diagnostic service, and it has been shown to be capable of detecting these organisms on a frequent basis, so that explanation seems unlikely.

This cross-sectional study sampled the vaginal microbiota at 1 week postpartum. Longitudinal studies have found that during pregnancy specific community structures are more stable than others (17) and that as pregnancy progresses there is an increase in



abundance of *Lactobacillus* spp. (23). However, the postpartum vaginal microbiota has been shown to be capable of an abrupt drop in the abundance of *Lactobacillus* spp. and an increase in those of *Prevotella* spp., *Anaerococcus* spp., *Streptococcus* spp., and *Peptoniphilus* spp. (3, 11, 27). One study followed a small cohort for up to a year postpartum and also found the microbiota disturbance to persist (3). An extensive longitudinal study is needed to confirm both the stability of these community structures over time and shifts in microbial composition pre- and postpartum.

Bacterial vaginosis has previously been associated with preterm birth, and we found that the majority of participants in this study were dominated with BV-associated bacteria, similar to BV-associated bacteria found in another large study (23). The effect this may have on subsequent pregnancies is unknown. BV is more prevalent in Malawi than in the United States and Europe, with incidences between 35% and 85.5% reported using a mixture of Amsel and Nugent (based on the observation of specific morphotypes under the microscope after Gram stain) methods (19, 29, 30). CST 4 subgroups in this study contain anaerobic bacteria that could represent an altered BV microbiota in this population; however, we unfortunately do not have Nugent score results to compare associations with symptoms of BV.

Administration of antibiotics in pregnancy in Africa has been shown to reduce the risk of preterm birth and low birth weight, presumably by eradicating certain vaginal bacteria previously associated with bacterial vaginosis and by reducing the risk of ascending intrauterine infection (30, 38). However, the ideal of a healthy community state that encompasses all populations, and an unhealthy state that must be treated, may not exist. Although a *Lactobacillus* species-dominated microbiota seems to be advantageous, there could be a specific subset of *Lactobacillus*-deficient communities that is adverse. At the time of publication, it is common when defining vaginal communities to group them into CSTs based on prevalences of certain bacteria. However, we have shown that there are complex bacterial associations that cannot be reliably explained by the original CST definitions. While we have attempted to expand the definitions in this study, it may be the case that a reduction of these data into a few labeled groups cannot be achieved, and new analytical methods that move beyond this should be deployed when analyzing these kinds of data.

## MATERIALS AND METHODS

**Ethics approval and consent to participate.** Written consent was obtained from the mother at enrollment either by signature or by thumbprint if not literate. If a thumbprint was obtained, an impartial witness also attended and signed. This consent procedure and ethical approval were obtained from the College of Medicine Research and Ethics Committee (COMREC), University of Malawi (protocol no. P.08/10/972). The trial was registered at ClinicalTrials.gov as NCT01239693.

**Study design and enrollment.** This cross-sectional study was a substudy of a clinical trial assessing the impact of lipid-based nutrient supplements (LNS) given to mothers during pregnancy and first 6 months of lactation and to children from 6 to 18 months of age on maternal and child health (34). Participants were enrolled prospectively before 20 weeks gestation and followed through pregnancy, childbirth, and beyond. All women enrolled as part of the main trial were accepted as eligible for the presently described substudy.

**Study setting.** Recruitment took place in 4 centers in Mangochi District, Southern Malawi: Mangochi District Hospital, Malindi Hospital, Lungwena Health Center, and Namwera Health Center.

**Collection of birth outcome and baseline data.** At enrollment, participants' weight, height, and hemoglobin concentrations were measured and obstetric history was recorded. Duration of pregnancy was measured using ultrasound. All participants were tested for malarial infection and HIV (unless they were already known to be HIV positive or opted out). At the first home visit to participants 1 to 2 weeks postenrollment, information was gathered on demographic, social, and economic backgrounds. Birth weight was taken as soon as possible after delivery, while newborn length and newborn head circumference were taken at the infant's first clinic visit at 1 to 2 weeks old.

**Sample collection.** Vaginal swabs were collected at the health centers during a postpartum visit that took place within the first 2 weeks of delivery. The full range of collection times was much larger, with some samples collected nearly 2 years postdelivery. A nurse collected the sample by inserting the swab approximately 7 cm deep past the vaginal introitus, rotating it 3 times back and forth, and then removing the swab and placing it back into the tube. If sample collection took place at an outlying health center or Malindi Hospital, the samples were stored at  $-20^{\circ}\text{C}$  for a maximum of 2 days before being transferred to  $-80^{\circ}\text{C}$  storage at Mangochi District Hospital.

**DNA extraction.** In preparation for extraction of genomic DNA, vaginal swabs were submerged in 200  $\mu\text{l}$  of buffer AE (10 mM Tris-Cl, 0.5 mM EDTA, pH 9.0; Qiagen) for 1 min, and all liquid was expressed out of

the swab before removal. Extraction was carried out using the QIAmp DNA minikit (Qiagen) as per the manufacturer's protocol, with an additional bacterial cell wall disruption step after lysis with proteinase K. In the additional step, 0.1-mm glass beads (Lysing Matrix B; MP Biomedicals) were added to each sample and the 2-ml tubes were shaken on a cell disrupter (Vortex Genie 2; Scientific Industries) for 10 min at the highest speed. For every 10 extractions, a negative extraction control was included (200  $\mu$ l buffer AE).

**16S rRNA gene amplicon high-throughput sequencing.** Library preparation was carried out on extracted DNA using dual barcoded primers with attached Illumina-compatible adapters targeting the V5 to V7 regions of the 16S rRNA gene (785F, 5'-GGATTAGATACCCBRGTAGTC-3', and 1175R, 5'-ACGTCRTCCCCDCTTCCTC-3') as previously published (35). Each library preparation PCR was carried out with 1 $\times$  Molzym PCR buffer, 200  $\mu$ M deoxynucleoside triphosphates (dNTPs) (Bioline), 0.4  $\mu$ M forward and reverse primers, 25 mM Moltaq, 5  $\mu$ l template DNA, and molecular grade water (Bioline) to give a final reaction volume of 25  $\mu$ l. Vaginal 16S rRNA genes were amplified under the following conditions: 94°C for 3 min, followed by 30 cycles of 94°C for 30 s, 60°C for 40 s, and 72°C for 90 s, with a final extension cycle of 72°C for 10 min. The resulting amplicon was cleaned and pooled using SequalPrep normalization plate kits (Invitrogen) and AMPure XP beads (Beckman Coulter) both as per manufacturer's protocol. Each plate was pooled into an equimolar final library after quantification using a Qubit 2.0 fluorometer (Life Technologies). The library was loaded onto a MiSeq instrument (Illumina) as per the manufacturer's protocol for 500-cycle V2 kits, with the addition of custom sequencing primers for read 1 (TACCGGGACTTAGGATTAGATACCCBRGTAGTC), read 2 (AACACGTTTTAACGTCRTCCCCDCTTCCTC), and index 1 (GAGGAAGGHGGGGAYGACGTAAAACGTGTT).

**Bioinformatic analysis.** Paired-end sequenced reads from each MiSeq run were merged using FLASH (Fast Length Adjustment of SHort reads) software (36), demultiplexed, and pooled. Sequences were clustered into operational taxonomic units (OTUs) using QIIME v1.8.0 (31) at 97% sequence similarity using closed-reference OTU picking against a small custom database of full-length 16S rRNA gene sequences. Any sequences that failed to match at 97% were assigned against the full Greengenes database. Mock communities of 21 bacterial strains (BEI Resources) were sequenced alongside samples in each sequencing run, and these were used to calculate sensitivity and to provide a cutoff between OTUs considered to be present in the sample and those considered contamination. Based on the recreation of sequenced mock community results we filtered the data set to keep only OTUs that were present at >3 reads in >5% of all samples. Interrun variability was validated as well, using the relative abundances of strains in the mock community samples. Negative library preparation and extraction controls (molecular grade H<sub>2</sub>O; Bioline) were also sequenced, and OTUs present in negative controls after filtering steps were removed from the entire data set. After filtering steps, any samples with less than 1,000 reads were also removed. *De novo* clustering into CSTs was performed on the Bray-Curtis distances between all samples using the partitioning around medoids algorithm in R as previously described (3). Clustering was used to bin participants into groups based on how similar their vaginal microbiota were to each other, with the number of clusters determined from the gap statistic (see Fig. S2 in the supplemental material). Both PERMANOVA and ANOSIM tests were performed through the *vegan* package (version 2.4) in R using Bray-Curtis dissimilarities with 999 permutations. For the PERMANOVA test, nutritional intervention, maternal BMI at enrollment, maternal age, HIV status, proxy for socioeconomic status, number of previous pregnancies, maternal anemia at enrollment, and number of days after delivery the sample was taken were all added into the model as covariates.

**Statistical analysis.** All regression models comparing OTU abundances and birth outcomes were adjusted for nutritional intervention, maternal BMI at enrollment, maternal age, proxy for socioeconomic status, number of previous pregnancies, maternal anemia at enrollment, and site of enrollment. Multiple comparison *q* values were calculated using the Benjamini-Hochberg correction to control the false discovery rate. Birth weight as measured was used if recorded within 48 h of delivery; if not, birth weight was back calculated from weight measured at 6 or 13 days. If the weight was first measured within 2 to 5 days after delivery, when infants usually lose weight, birth weight was estimated by applying an age-dependent multiplicative factor to the measured weight (32). Length-for-age Z score (LAZ) and head-circumference-for-age Z score (HCZ) were calculated using the WHO Child Growth Standards (33). The proxy for socioeconomic status used in this study was calculated as previously stated (37). Participants were grouped based on how many days after delivery they were sampled, and bin lengths were chosen to try to evenly distribute participants across groups. Statistical analyses were carried out with Stata v13 and R v3.1.0. Adjusted linear regression models were used to compare mean duration of pregnancy, birth weight, LAZ, and HCZ with CST. Covariates entered into adjusted models were entered into the model in a one-step forced entry method.

**Accession number(s).** All sequence data used in this study can be found in the EBI European Nucleotide Archive. The run accession numbers are ERR1554775, ERR1554776, ERR1554777, ERR1554778, ERR1558673, ERR1558674, ERR1558675, and ERR1558676. The study accession number is PRJEB15035. Mapping metadata for all sequencing runs can be found in Table S1 in the supplemental material.

## SUPPLEMENTAL MATERIAL

Supplemental material for this article may be found at <https://doi.org/10.1128/AEM.02150-17>.

**SUPPLEMENTAL FILE 1**, PDF file, 1.0 MB.

**SUPPLEMENTAL FILE 2**, XLSX file, 0.1 MB.

## ACKNOWLEDGMENTS

We thank all the women who agreed to take part in this study. We also thank the members of the iLiNS Steering Committee: Kathryn Dewey, Kenneth H. Brown, Anna Lartey, Jean Bosco Ouedraogo, Stephen A. Vosti, and Mamane Zeilani.

This publication is based on research funded by a grant to the University of California Davis from the Office of Health, Infectious Diseases, and Nutrition, Bureau for Global Health, U.S. Agency for International Development (USAID), under the terms of cooperative agreement no. AID-OAA-A-12-00005, through the Food and Nutrition Technical Assistance III Project (FANTA), managed by FHI 360. Additional support was provided by the Bill & Melinda Gates Foundation through a grant to the University of California Davis, the Academy of Finland (grant 252075), and the Competitive State Research Financing of the Expert Responsibility Area of Tampere University Hospital (grant 9S001).

The findings and conclusions contained within the article are those of the authors and do not necessarily reflect positions or policies of the Bill & Melinda Gates Foundation, USAID, the U.S. government, or the other funders. The funders had no role in study design, data collection and analysis, decision to publish, or preparation of the manuscript. We declare that we have no competing interests.

R.D., A.G., Y.-M.F., K.M., P.A., N.K. and K.H. designed the study. R.D. performed the laboratory work and analyzed the data. A.G. and Y.-M.F. assisted in collection of samples and data. R.D. wrote the manuscript with contributions from all other authors.

## REFERENCES

- Ravel J, Gajer P, Abdo Z, Schneider GM, Koenig SSK, McCulle SL, Karlebach S, Gorle R, Russell J, Tacket CO, Brotman RM, Davis CC, Ault K, Peralta L, Forney LJ. 2011. Vaginal microbiome of reproductive-age women. *Proc Natl Acad Sci U S A* 108(Suppl 1):4680–4687. <https://doi.org/10.1073/pnas.1002611107>.
- Myer L, Denny L, Telerant R, de Souza M, Wright TC, Jr, Kuhn L. 2005. Bacterial vaginosis and susceptibility to HIV infection in South African women: a nested case-control study. *J Infect Dis* 192:1372–1380. <https://doi.org/10.1086/462427>.
- DiGiulio DB, Callahan BJ, McMurdie PJ, Costello EK, Lyell DJ, Robaczewska A, Sun CL, Goltsman DSA, Wong RJ, Shaw G, Stevenson DK, Holmes SP, Relman DA. 2015. Temporal and spatial variation of the human microbiota during pregnancy. *Proc Natl Acad Sci U S A* 112:11060–11065. <https://doi.org/10.1073/pnas.1502875112>.
- Witkin S. 2015. The vaginal microbiome, vaginal anti-microbial defence mechanisms and the clinical challenge of reducing infection-related preterm birth. *BJOG* 122:213–218. <https://doi.org/10.1111/1471-0528.13115>.
- Donders G, Bellen G, Rezeberga D. 2011. Aerobic vaginitis in pregnancy. *BJOG* 118:1163–1170. <https://doi.org/10.1111/j.1471-0528.2011.03020.x>.
- Hillier SL, Nugent RP, Eschenbach DA, Krohn MA, Gibbs RS, Martin DH, Cotch MF, Edelman R, Pastorek JG, Rao AV, McNellis D, Regan JA, Carey JC, Klebanoff MA, Vaginal Infections and Prematurity Study Group. 1995. Association between bacterial vaginosis and preterm delivery of a low-birth-weight infant. *N Engl J Med* 333:1737–1742. <https://doi.org/10.1056/NEJM199512283332604>.
- Donders G, Van Calsteren K, Bellen G, Reybrouck R, Van den Bosch T, Riphagen I, Van Lierde S. 2009. Predictive value for preterm birth of abnormal vaginal flora, bacterial vaginosis and aerobic vaginitis during the first trimester of pregnancy. *BJOG* 116:1315–1324. <https://doi.org/10.1111/j.1471-0528.2009.02237.x>.
- Gratacós E, Figueras F, Barranco M, Vila J, Cararach V, Alonso PL, Fortuny A. 1998. Spontaneous recovery of bacterial vaginosis during pregnancy is not associated with an improved perinatal outcome. *Acta Obstet Gynecol Scand* 77:37–40.
- Vogel I, Thorsen P, Hogan VK, Schieve LA, Jacobsson B, Ferre CD. 2006. The joint effect of vaginal *Ureaplasma urealyticum* and bacterial vaginosis on adverse pregnancy outcomes. *Acta Obstet Gynecol Scand* 85:778–785. <https://doi.org/10.1080/00016340500442423>.
- Kwak D-W, Hwang H-S, Kwon J-Y, Park Y-W, Kim Y-H. 2013. Co-infection with vaginal *Ureaplasma urealyticum* and *Mycoplasma hominis* increases adverse pregnancy outcomes in patients with preterm labor or preterm premature rupture of membranes. *J Matern Fetal Neonatal Med* 27:333–337. <https://doi.org/10.3109/14767058.2013.818124>.
- MacIntyre DA, Chandiramani M, Lee YS, Kindinger L, Smith A, Angelopoulos N, Lehne B, Arulkumaran S, Brown R, Teoh TG, Holmes E, Nicholson JK, Marchesi JR, Bennett PR. 2015. The vaginal microbiome during pregnancy and the postpartum period in a European population. *Sci Rep* 5:8988. <https://doi.org/10.1038/srep08988>.
- Blencowe H, Cousens S, Oestergaard MZ, Chou D, Moller A-B, Narwal R, Adler A, Vera Garcia C, Rohde S, Say L, Lawn JE. 2012. National, regional, and worldwide estimates of preterm birth rates in the year 2010 with time trends since 1990 for selected countries: a systematic analysis and implications. *Lancet* 379:2162–2172. [https://doi.org/10.1016/S0140-6736\(12\)60820-4](https://doi.org/10.1016/S0140-6736(12)60820-4).
- Goldenberg RL, Culhane JF, Iams JD, Romero R. 2008. Epidemiology and causes of preterm birth. *Lancet* 371:75–84. [https://doi.org/10.1016/S0140-6736\(08\)60074-4](https://doi.org/10.1016/S0140-6736(08)60074-4).
- Oliver RS, Lamont RF. 2013. Infection and antibiotics in the aetiology, prediction and prevention of preterm birth. *J Obstet Gynaecol* 33:768–775. <https://doi.org/10.3109/01443615.2013.842963>.
- Watts DH, Eschenbach DA, Kenny GE. 1989. Early postpartum endometritis: the role of bacteria, genital mycoplasmas, and *Chlamydia trachomatis*. *Obstet Gynecol* 73:52–60.
- Nugent RP, Krohn MA, Hillier SL. 1991. Reliability of diagnosing bacterial vaginosis is improved by a standardized method of gram stain interpretation. *J Clin Microbiol* 29:297–301.
- Gajer P, Brotman RM, Bai G, Sakamoto J, Schütte UME, Zhong X, Koenig SSK, Fu L, Ma ZS, Zhou X, Abdo Z, Forney LJ, Ravel J. 2012. Temporal dynamics of the human vaginal microbiota. *Sci Transl Med* 4:132ra52. <https://doi.org/10.1126/scitranslmed.3003605>.
- Fettweis JM, Brooks JP, Serrano MG, Sheth NU, Girerd PH, Edwards DJ, Strauss JF, Jefferson KK, Buck GA. 2014. Differences in vaginal microbiome in African American women versus women of European ancestry. *Microbiology* 160:2272–2282. <https://doi.org/10.1099/mic.0.081034-0>.
- Chico RM, Mayaud P, Ariti C, Mabey D, Ronsmans C, Chandramohan D. 2012. Prevalence of malaria and sexually transmitted and reproductive tract infections in pregnancy in sub-Saharan Africa: a systematic review. *JAMA* 307:2079–2086. <https://doi.org/10.1001/jama.2012.3428>.
- Enwonwu CO, Phillips RS, Falkler WA. 2002. Nutrition and oral infectious diseases: state of the science. *Compend Contin Educ Dent* 23:431–434, 436, 438 passim; quiz 448.
- Hummelen R, Fernandes AD, Macklaim JM, Dickson RJ, Chantalucha J, Gloor GB, Reid G. 2010. Deep sequencing of the vaginal microbiota of

- women with HIV. *PLoS One* 5:e12078. <https://doi.org/10.1371/journal.pone.0012078>.
22. Schellenberg JJ, Links MG, Hill JE, Dumonceaux TJ, Kimani J, Jaoko W, Wachihi C, Mungai JN, Peters GA, Tyler S, Graham M, Severini A, Fowke KR, Ball TB, Plummer FA. 2011. Molecular definition of vaginal microbiota in East African commercial sex workers. *Appl Environ Microbiol* 77:4066–4074. <https://doi.org/10.1128/AEM.02943-10>.
  23. Romero R, Hassan SS, Gajer P, Tarca AL, Fadrosch DW, Bieda J, Chaemsaithong P, Miranda J, Chaiworapongsa T, Ravel J. 2014. The vaginal microbiota of pregnant women who subsequently have spontaneous preterm labor and delivery and those with a normal delivery at term. *Microbiome* 2:18. <https://doi.org/10.1186/2049-2618-2-18>.
  24. Yatsunenkov T, Rey FE, Manary MJ, Trehan I, Dominguez-Bello MG, Contreras M, Magris M, Hidalgo G, Baldassano RN, Anokhin AP, Heath AC, Warner B, Reeder J, Kuczynski J, Caporaso JG, Lozupone CA, Lauber C, Clemente JC, Knights D, Knight R, Gordon JI. 2012. Human gut microbiome viewed across age and geography. *Nature* 486:222–227. <https://doi.org/10.1038/nature11053>.
  25. Misra DP, Trabert B. 2007. Vaginal douching and risk of preterm birth among African American women. *Am J Obstet Gynecol* 196:140.e1-8. <https://doi.org/10.1016/j.ajog.2006.10.880>.
  26. Brotman RM, Klebanoff MA, Nansel TR, Andrews WW, Schwebke JR, Zhang J, Yu KF, Zenilman JM, Scharfstein DO. 2008. A longitudinal study of vaginal douching and bacterial vaginosis—a marginal structural modeling analysis. *Am J Epidemiol* 168:188–196. <https://doi.org/10.1093/aje/kwn103>.
  27. Bisanz JE, Enos MK, PrayGod G, Seney S, Macklaim JM, Chilton S, Willner D, Knight R, Fusch C, Fusch G, Gloor GB, Burton JP, Reid G. 2015. Microbiota at multiple body sites during pregnancy in a rural Tanzanian population and effects of Moringa-supplemented probiotic yogurt. *Appl Environ Microbiol* 81:4965–4975. <https://doi.org/10.1128/AEM.00780-15>.
  28. Costea PI, Zeller G, Sunagawa S, Pelletier E, Alberti A, Levenez F, Truitt T, Driessen M, Herczeg R, Jung F-E, Kultima JR, Hayward MR, Coelho LP, Allen-Vercoe E, Bertrand L, Blaut M, Brown JRM, Carton T, Cools-Portier S, Daigneault M, Derrien M, Druesne A, de Vos WM, Finlay BB, Flint HJ, Guarner F, Hattori M, Heilig H, Luna RA, van Hylckama Vlieg J, Junick J, Klymiuk I, Langella P, Le Chatelier E, Mai V, Manichanh C, Martin JC, Mery C, Morita H, O'Toole PW, Orvain C, Patil KR, Penders J, Persson S, Pons N, Popova M, Salonen A, Saulnier D, Scott KP, Singh B, Slezak K, Veiga P, Versalovic J, Zhao L, Zoetendal EG, Ehrlich SD, Dore J, Bork P. 2017. Towards standards for human fecal sample processing in metagenomic studies. *Nat Biotechnol* 35:1069–1076. <https://doi.org/10.1038/nbt.3960>.
  29. Taha TE, Kumwenda NI, Kafulafula G, Makanani B, Nkhoma C, Chen S, Tsui A, Hoover DR. 2007. Intermittent intravaginal antibiotic treatment of bacterial vaginosis in HIV-uninfected and -infected women: a randomized clinical trial. *PLoS Clin Trials* 2:e10. <https://doi.org/10.1371/journal.pctr.0020010>.
  30. Balkus JE, Richardson BA, Rabe LK, Taha TE, Mgodini N, Kasaro MP, Ramjee G, Hoffman IF, Abdool Karim SS. 2014. Bacterial vaginosis and the risk of *Trichomonas vaginalis* acquisition among HIV-1-negative women. *Sex Transm Dis* 41:123–128. <https://doi.org/10.1097/OLQ.000000000000075>.
  31. Caporaso JG, Kuczynski J, Stombaugh J, Bittinger K, Bushman FD, Costello EK, Fierer N, Peña AG, Goodrich JK, Gordon JI, Huttley GA, Kelley ST, Knights D, Koenig JE, Ley RE, Lozupone CA, McDonald D, Muegge BD, Pirrung M, Reeder J, Sevinsky JR, Turnbaugh PJ, Walters WA, Widmann J, Yatsunenkov T, Zaneveld J, Knight R. 2010. QIIME allows analysis of high-throughput community sequencing data. *Nat Methods* 7:335–336. <https://doi.org/10.1038/nmeth.f.303>.
  32. Cheung YB. 2013. Statistical analysis of human growth and development, 1st ed. CRC Press, Boca Raton, FL.
  33. Fall CHD, Fisher DJ, Osmond C, Margetts BM, Maternal Micronutrient Supplementation Study Group. 2009. Multiple micronutrient supplementation during pregnancy in low-income countries: a meta-analysis of effects on birth size and length of gestation. *Food Nutr Bull* 30: S533–S546. <https://doi.org/10.1177/156482650903045408>.
  34. Ashorn P, Alho L, Ashorn U, Cheung YB, Dewey KG, Harjunmaa U, Lartey A, Nkhoma M, Phiri N, Phuka J, Vosti SA, Zeilani M, Maleta K. 2015. The impact of lipid-based nutrient supplement provision to pregnant women on newborn size in rural Malawi: a randomized controlled trial. *Am J Clin Nutr* 101:387–397. <https://doi.org/10.3945/ajcn.114.088617>.
  35. Doyle RM, Harris K, Kamiza S, Harjunmaa U, Ashorn U, Nkhoma M, Dewey KG, Maleta K, Ashorn P, Klein N. 2017. Bacterial communities found in placental tissues are associated with severe chorioamnionitis and adverse birth outcomes. *PLoS One* 12:e0180167. <https://doi.org/10.1371/journal.pone.0180167>.
  36. Magoč T, Salzberg SL. 2011. FLASH: fast length adjustment of short reads to improve genome assemblies. *Bioinformatics* 27:2957–2963. <https://doi.org/10.1093/bioinformatics/btr507>.
  37. Filmer D, Pritchett LH. 2001. Estimating wealth effects without expenditure data—or tears: an application to educational enrollments in states of India. *Demography* 38:115–132.
  38. Luntamo M, Kulmala T, Mbewe B, Cheung YB, Maleta K, Ashorn P. 2010. Effect of repeated treatment of pregnant women with sulfadoxine-pyrimethamine and azithromycin on preterm delivery in Malawi: a randomized controlled trial. *Am J Trop Med Hyg* 83:1212–1220. <https://doi.org/10.4269/ajtmh.2010.10-0264>.