



UNIVERSITY OF TAMPERE

This document has been downloaded from
TamPub – The Institutional Repository of University of Tampere

 *Publisher's version*

The permanent address of the publication is <http://urn.fi/URN:NBN:fi:uta-201403201250>

Author(s): Neumann, Johannes; Havulinna, Aki; Zeller, Tanja; Appelbaum, Sebastian; Kunnas, Tarja; Nikkari, Seppo; Jousilahti, Pekka; Blankenberg, Stefan; Sydow, Karsten; Salomaa, Veikko

Title: Comparison of Three Troponins as Predictors of Future Cardiovascular Events – Prospective Results from the FINRISK and BiomaCaRE Studies

Year: 2014

Journal Title: Plos ONE

Vol and number: 9 : 3

Pages: 1-8

ISSN: 1932-6203

Discipline: Biomedicine; Internal medicine

School /Other Unit: School of Medicine

Item Type: Journal Article

Language: en

DOI: <http://dx.doi.org/10.1371/journal.pone.0090063>

URN: URN:NBN:fi:uta-201403201250

URL: <http://dx.doi.org/10.1371/journal.pone.0090063>

All material supplied via TamPub is protected by copyright and other intellectual property rights, and duplication or sale of all part of any of the repository collections is not permitted, except that material may be duplicated by you for your research use or educational purposes in electronic or print form. You must obtain permission for any other use. Electronic or print copies may not be offered, whether for sale or otherwise to anyone who is not an authorized user.

Comparison of Three Troponins as Predictors of Future Cardiovascular Events – Prospective Results from the FINRISK and BiomaCaRE Studies

Johannes Tobias Neumann¹, Aki S. Havulinna², Tanja Zeller^{1,4}, Sebastian Appelbaum¹, Tarja Kunnas³, Seppo Nikkari³, Pekka Jousilahti², Stefan Blankenberg^{1,4}, Karsten Sydow¹, Veikko Salomaa^{2*}

1 Department of General and Interventional Cardiology, Hamburg University Heart Center, Hamburg, Germany, **2** National Institute for Health and Welfare, Department of Chronic Disease Prevention, Helsinki, Finland, **3** Department of Medical Biochemistry, University of Tampere Medical School, Tampere, Finland, **4** German Center for Cardiovascular Research (DZHK), Partner Site Hamburg/Lübeck/Kiel, Germany

Abstract

Importance and Objective: Besides their role in diagnosis of acute myocardial infarction (MI), troponins may be powerful biomarkers for risk stratification in the general population. The objective of our study was to compare the performance of three troponin assays in cardiovascular disease (CVD) risk prediction in a population-based cohort without a history of CVD events.

Design, Setting and Participants: Troponin I concentrations were measured using a contemporary-sensitivity, high-sensitivity, and super-sensitivity assay in 7,899 participants of the general-population based FINRISK 1997 cohort. We used Cox proportional hazards regression to determine relative risks, followed by measures of discrimination and reclassification using 10-fold cross-validation to control for over-optimism.

Main Outcome: As outcome measures we used CVD, MI, ischemic stroke, heart failure (HF), and major adverse cardiac events (MACE). During the follow-up of 14 years 1,074 incident MACE were observed.

Results: Values above the lower limit of detection were observed in 26.4%, 81.5% and 93.9% for the contemporary-sensitivity, high-sensitivity and super-sensitivity assay, respectively. We observed significant associations of troponin concentrations with the risk of future CVD events and the results tended to become stronger with increasing assay sensitivity. For the super-sensitivity assay the multivariate adjusted hazard ratios (per one standard deviation increase) for different outcomes were: MI 1.24 [95% CI 1.11–1.39], stroke 1.14 [1.01–1.28], CVD 1.15 [1.07–1.24], HF 1.28 [1.18–1.39], and MACE 1.18 [1.11–1.25]. In subjects with intermediate risk, we found an improvement of net reclassification for HF (10.2%, $p < 0.001$), and MACE (5.1%, $p < 0.001$).

Conclusion: Using a super-sensitivity assay, cardiac troponin was detectable in almost all healthy individuals. Its concentration improved risk prediction and reclassification for cardiovascular endpoints.

Citation: Neumann JT, Havulinna AS, Zeller T, Appelbaum S, Kunnas T, et al. (2014) Comparison of Three Troponins as Predictors of Future Cardiovascular Events – Prospective Results from the FINRISK and BiomaCaRE Studies. PLoS ONE 9(3): e90063. doi:10.1371/journal.pone.0090063

Editor: Alexander G. Obukhov, Indiana University School of Medicine, United States of America

Received: August 18, 2013; **Accepted:** January 28, 2014; **Published:** March 4, 2014

Copyright: © 2014 Neumann et al. This is an open-access article distributed under the terms of the Creative Commons Attribution License, which permits unrestricted use, distribution, and reproduction in any medium, provided the original author and source are credited.

Funding: This work has been sustained by the MORGAM Project's current funding: European Community FP 7 projects ENGAGE CHANCES and BiomaCaRE. This has supported central coordination, workshops and part of the activities of the MORGAM Data Centre, at THL in Helsinki, Finland. MORGAM Participating Centers are funded by regional and national governments, research councils, charities, and other local sources. VS has been supported by the Academy of Finland (grant numbers 129 494 and 139 635) and the Finnish Foundation for Cardiovascular Research. SB has received research funding from Boehringer Ingelheim, Bayer, Abbott Diagnostics, SIEMENS, Thermo Fisher and Roche Diagnostics and received honoraria for lectures or consulting from Boehringer Ingelheim, Bayer, Roche, Astra Zeneca, SIEMENS, Thermo Fisher, and Abbott Diagnostics. VS has received a speaker honorarium from Roche Diagnostics. The funders had no role in study design, data collection and analysis, decision to publish, or preparation of the manuscript.

Competing Interests: This study has received partial support from commercial sources (Boehringer Ingelheim, Bayer, Abbott Diagnostics, SIEMENS, Thermo Fisher and Roche Diagnostics). This does not alter the authors' adherence to all the PLOS ONE policies on sharing data and materials.

* E-mail: veikko.salomaa@thl.fi

Introduction

The cardiac-specific protein complex troponin is released in conditions of myocardial damage, and therefore its use as a necrosis marker for the diagnosis of acute myocardial infarction (MI) is well established [1,2]. Application of sensitive cardiac troponin assays allow an early distinction between acute MI, and other acute cardiac events [3].

Identifying individuals with increased risk for incident cardiovascular diseases (CVD) is a major aim in primary prevention [4]. Thus, the use of biomarkers to identify and monitor individuals at high risk of CVD is emerging [5]. Besides the role in diagnosis of acute cardiac events, troponin T was shown to be a powerful biomarker for risk stratification in individuals with stable atherosclerotic disease [6,7]. With troponin T assays it is possible to measure troponin concentration in approximately 25% of the

general population. Using new high-sensitivity troponin I assays, it is now possible to measure very low troponin concentrations in more than 50% of healthy individuals, and with super-sensitivity troponin I assays in more than 95% of healthy individuals [8]. In patients with stable coronary heart disease, troponin concentrations measured by high-sensitivity assays were significantly associated with cardiovascular death and heart failure [9]. Furthermore, it was shown to be a prognostic marker for MI and cardiovascular death in a population with increased cardiovascular risk [10]. In a population-based setting, concentrations of high-sensitivity assayed troponin were associated with an increased risk for all-cause mortality [8,11]. In the population-based Framingham Heart Study and the Minnesota Heart Survey troponin concentrations measured by a super-sensitivity troponin assay were significantly associated with major adverse cardiovascular events (MACE), heart failure (HF), and cardiovascular death [12,13].

The use of more sensitive troponin assays has revealed a high prognostic potential of low troponin concentrations, but their clinical value in risk prediction has not been established and may depend on the sensitivity of the assay in question. Therefore, the objective of our study was to examine the hypothesis that a more sensitive assay detects more individuals at risk of future cardiovascular disease in a population-based cohort without a history of prior MACE. To address this issue, we measured troponin concentrations using a contemporary-sensitivity, high-sensitivity, and super-sensitivity troponin assay in 7,899 participants of the FINRISK 1997 cohort followed up for 14 years.

Methods

Study population

The present study included 8,444 individuals from the FINRISK study enrolled in 1997. This prospective population-based study was carried out in five districts of Finland, including North Karelia, Northern Savo (former Kuopio), Southwestern Finland, Oulu province, and the region of Helsinki and Vantaa. A stratified, random sample was drawn from the national population register, the age-range was 25–74 years. All individuals enrolled in the study received a physical examination, a self-administered questionnaire, and a blood sample was drawn. Altogether, 11,500 individuals were invited and 8,444 (73%) participated in the clinical examination. Individuals with a prevalent history of MACE ($n=470$) and pregnant women ($n=76$) were excluded from the present analysis. During a follow-up of up to 14 years, the National Hospital Discharge Register, the National Causes of Death Register and the National Drug Reimbursement Register were used to identify the endpoints [14]. The design of the FINRISK study has been published before [15]. The Ethics Committee of the National Public Health Institute approved the study, which followed the Declaration of Helsinki. All subjects gave written informed consent.

Cardiovascular risk factors and diseases

The blood pressure measurement was performed on the right arm in a sitting position after a 5-minute phase of rest. The cuff length was 40 cm. The mean of two measurements was used in the analyses. Data on the use of antihypertensive medications were collected with the questionnaire. Arterial hypertension was defined according to the American Heart Association (AHA) definition, meaning a blood pressure ≥ 140 mmHg systolic or ≥ 90 mmHg diastolic, or the use of antihypertensive medication. Smokers were classified by questionnaire as active smokers (smoking regularly ≥ 1 year and during the past 6 months), former smokers (smoked regularly ≥ 1 year and quit smoking ≥ 6 months before the survey),

and non-smokers (never smoked regularly). Diabetes was defined either as previously diagnosed diabetes or impaired glucose tolerance by a physician, or by taking any hypoglycemic drugs.

Defined Endpoints

The follow-up rate was 100% for the participants who continued living in Finland. Those who had permanently moved abroad (0.5% of the participants prior to Dec 31st, 2010) were lost to follow-up. The study endpoints were defined as follows. CVD included MI, coronary death, hospitalized unstable angina pectoris, any coronary revascularization, and ischemic stroke. Further endpoints were incident ischemic stroke (hemorrhagic strokes were excluded), incident HF, and MACE (CVD or HF). In a sub-analysis we further distinguished fatal MI from non-fatal MI. The use of Finnish national health care registries for identifying these cardiovascular outcomes has been validated [16].

Laboratory methods

Prior to drawing the blood samples, the individuals were asked for a 4-hour fasting period, avoiding heavy meals during the day. The median fasting time was 5 hours with an interquartile range of 3–7 hours. The blood samples were stored under standardized conditions at -70°C . Most routine laboratory parameters were measured at the Disease Risk Unit in the National Institute for Health and Welfare, Helsinki. The measurement of CRP, N-terminal pro-brain natriuretic peptide (NT-proBNP), and the different troponin assays were performed at the MORGAM Biomarker Laboratory, University Heart Center Hamburg, Germany, which was formerly located at the University Medical Center Mainz, Germany. The contemporary-sensitivity troponin I assay (STAT troponin I immunoassay, Abbott Diagnostics, USA; ARCHITECT i2000SR) was considered valid for values above the limit of detection (LOD) of 10 pg/mL, but observed values below this limit were also used in the analysis (assay range 0–50,000 pg/mL). The 10% coefficient of variation was at 32 pg/mL. Troponin was also assessed using a prototype high-sensitivity cardiac troponin assay (ARCHITECT STAT highly sensitive troponin I immunoassay, Abbott Diagnostics, USA, ARCHITECT i2000SR). The established LOD for the assay ranges from 0.8–1.9 with a median of 1.5 pg/mL. For analyses, a LOD of 1.9 pg/mL was considered. Observed values below this limit were also included in the analysis (assay range 0–50,000 pg/mL). The 10 percent coefficient of variation was at 5.2 pg/mL. The concentration representing the 99th percentile in the reference population was 30 pg/mL in 4,139 individuals of the population-based Gutenberg Health Study [1]. The super-sensitivity troponin I (Erenna Cardiac troponin-I immunoassay, Singulex, USA) had a median LOD of 1.0 pg/mL and an assay range of 0.1–600 pg/mL. The 10% coefficient of variation was between 0.78 and 1.6 pg/mL [17]. Again, values below the LOD were included in the analysis.

Statistical analysis

Baseline characteristics are presented as counts and percentages for dichotomous variables, and as median and IQR for continuous variables. Age and sex adjusted Kaplan-Meier-curves for MACE and HF were produced using categorized troponin concentrations. For the contemporary-sensitivity assay, we used 1 pg/mL (lowest observed non-zero value) and 10 pg/mL (assay threshold) as cut-points. For the high-sensitivity assay, we used 1.9 pg/mL (assay threshold), and 5.1 pg/mL (same percentile as 10 pg/mL for the contemporary assay) as cut-points. We proceeded the same way for the super-sensitivity assay, using cut-points of 1.0 pg/mL (median limit of detection) and 5.1 pg/mL (same percentile as 10 pg/mL for the contemporary assay). To describe the associ-

Table 1. Baseline Characteristics of the Study Population by Gender.

	All (N = 7899)	Women (N = 3970, 50.3%)	Men (N = 3929, 49.7%)
Age (years)	47.8 (21.8)	46.9 (21)	48.8 (22.5)
Cardiovascular risk factors			
Current smoker (%)	2060 (26.1%)	817 (20.6%)	1243 (31.6%)
Former smoker (%)	1637 (20.7%)	555 (14%)	1081 (27.5%)
Hypertension (%)	3522 (44.6%)	1461 (36.8%)	2061 (52.5%)
Diabetes (%)	403 (5.1%)	188 (4.7%)	215 (5.5%)
Clinical parameters			
Body mass index (kg/m ²)	26.0 (5.5)	25.4 (6.3)	26.5 (4.8)
Systolic BP (mmHg)	133 (27)	129 (26)	136 (25)
Total Cholesterol (mmol/L)	5.5 (1.4)	5.4 (1.4)	5.5 (1.4)
HDL Cholesterol (mmol/L)	1.4 (0.5)	1.5 (0.5)	1.2 (0.4)
Biomarkers			
cs-cTnI (pg/mL)	3.9 (9.0)	3.6 (9.7)	4.1 (7.8)
hs-cTnI (pg/mL)	3.0 (2.6)	2.5 (2.1)	3.6 (3.0)
ss-cTnI (pg/mL)	2.8 (3.0)	2.5 (2.6)	3.2 (3.2)
CRP (mg/L)	1.1 (1.9)	1.1 (1.9)	1.1 (1.8)
NT-proBNP (pg/mL)	42.1 (59.0)	55.0 (61.2)	28.7 (48.4)
Incident Outcome			
All-cause death (%)	810 (10.3%)	258 (6.5%)	552 (14%)
Fatal MI (%)	86 (1.1%)	22 (0.6%)	64 (1.6%)
MI (%)	277 (3.5%)	69 (1.7%)	208 (5.3%)
Stroke (%)	299 (3.8%)	93 (2.3%)	206 (5.2%)
Heart failure (%)	505 (6.4%)	221 (5.6%)	284 (7.2%)
CVD (%)	770 (9.8%)	217 (5.5%)	553 (14.1%)
MACE (%)	1074 (13.6%)	372 (9.4%)	702 (17.9%)

Persons with prevalent MACE and pregnant women have been excluded. Binary variables are shown in absolute counts and percentages. For continuous variables the median and the IQR are shown.

MI = Myocardial infarction, MACE = major adverse cardiac events, BP = blood pressure, HDL = high-density-lipoprotein, CRP = c-reactive protein, NT-proBNP = N-terminal pro-brain natriuretic peptide, IQR = interquartile range, CVD = cardiovascular disease, cs-cTnI = troponin I measured by contemporary-sensitivity assay, hs-cTnI = troponin I measured by high-sensitivity assay, ss-cTnI = troponin I measured by super-sensitivity assay

doi:10.1371/journal.pone.0090063.t001

ation of troponin with clinical endpoints, Cox regression models adjusting for the variables of the Framingham risk score (log-transformed total cholesterol, log-transformed HDL, log-trans-

Table 2. Absolute and Relative Distributions of Troponin I Concentrations in the Study Population.

Troponin	Category 1	Category 2	Category 3	% above LOD
cs-cTnI	2273	3543	2083	26.4%
hs-cTnI	1462	4653	1784	81.5%
ss-cTnI	479	5641	1779	93.9%

The categories were defined as follows. For the contemporary-sensitivity assay, troponin category 1 is 0–1 pg/mL (lowest observed non-zero value), category 2 is 1–10 pg/mL (LOD), and category 3 is >10 pg/mL. For the high-sensitivity assay, troponin category 1 is 0–1.9 pg/mL (LOD), category 2 1.9–5.1 pg/mL (same percentile as 10 pg/mL for contemporary troponin), and category 3 is >5.1 pg/mL. For the super-sensitivity assay, troponin category 1 is 0–1.0 pg/mL (median limit of detection), category 2 1.0–5.1 pg/mL (according to the percentiles of contemporary troponin), and category 3 is >5.1 mg/mL. cs-cTnI = troponin I measured by contemporary-sensitivity assay, hs-cTnI = troponin I measured by high-sensitivity assay, ss-cTnI = troponin I measured by super-sensitivity assay, LOD = limit of detection.

doi:10.1371/journal.pone.0090063.t002

formed systolic blood pressure, hypertension medication, diabetes, current smoking) and region of Finland (east, west) were computed. We used the Framingham equation meant for estimating the 10-year risk of cardiovascular event in primary care [18]. In these analyses troponin concentrations were log-transformed, and age was used as the time scale. Multiple imputation techniques were used to manage missing values [19,20]. The additional value of troponin concentration to the Framingham risk score was assessed by means of the C-index, integrated discrimination improvement (IDI) and net reclassification improvement (NRI) with risk categories [0–5%), [5–10%), [10–20%), and [20–100%] for 10-year risk [21,22]. The clinical NRI refers to individuals with an intermediate 10-year risk (5–20%) according to the Framingham Risk Score. Ten-fold cross-validation was used to control for over-optimism. R version 15.1 (R Foundation for Statistical Computing, Vienna, Austria) was used for all analyses. All tests were two-tailed and $p < 0.05$ was considered statistically significant. The results of the contemporary-sensitivity troponin I assay in this study population have been published before [19]. In comparison to the earlier publication we now have 3 more years of follow-up with 232 more CVD events. Furthermore, the modeling is slightly different: in the present manuscript the included covariates are different, the troponin I

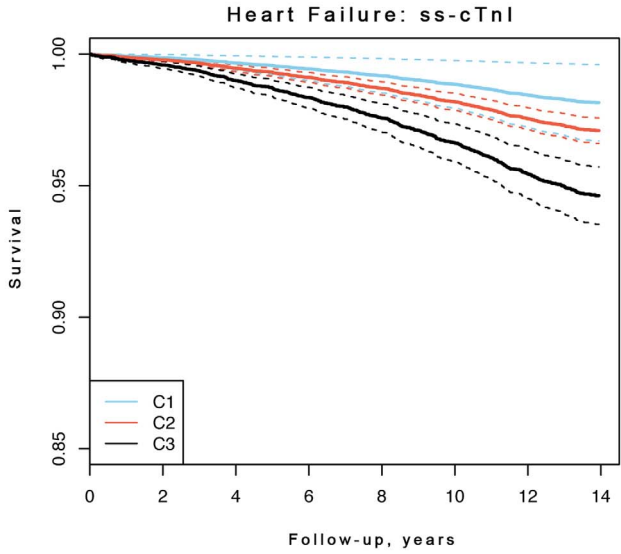
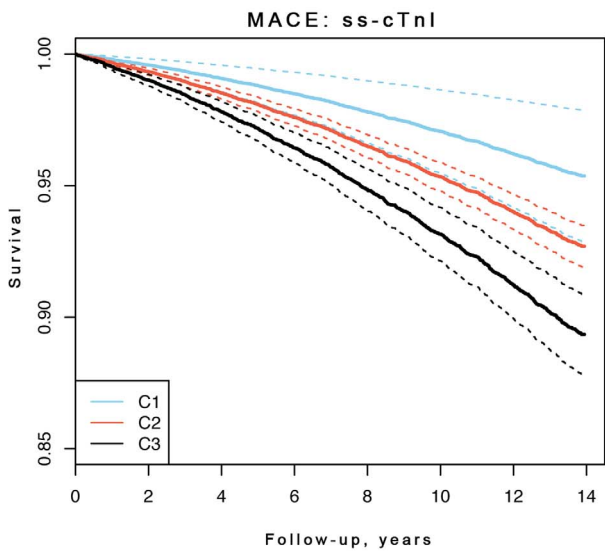
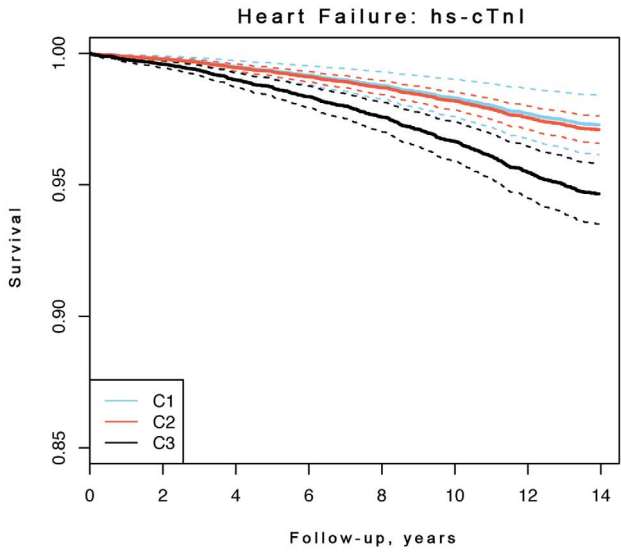
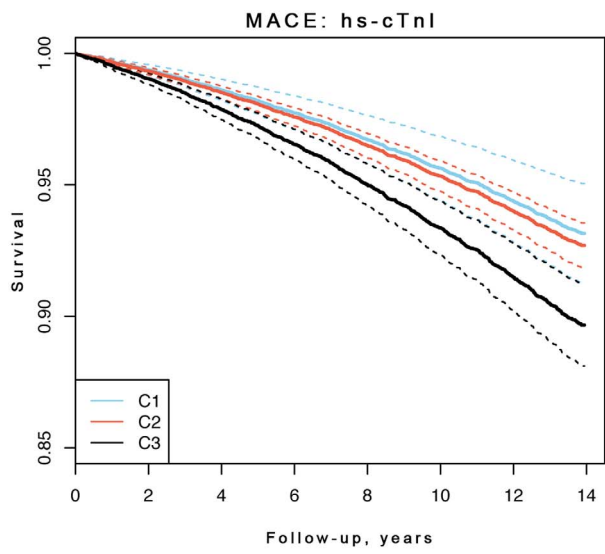
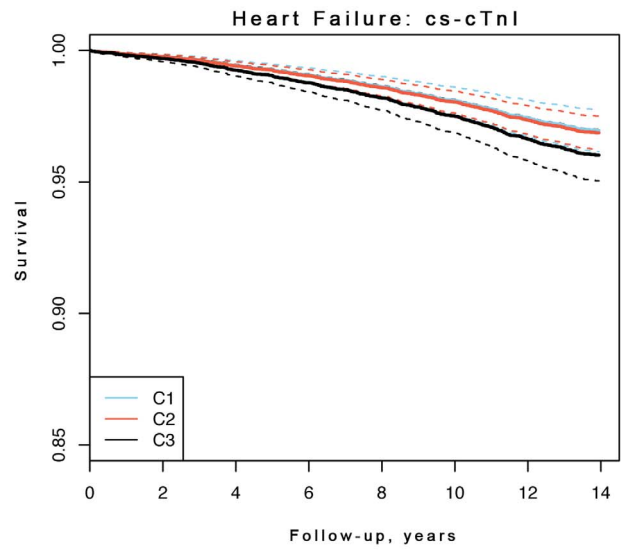
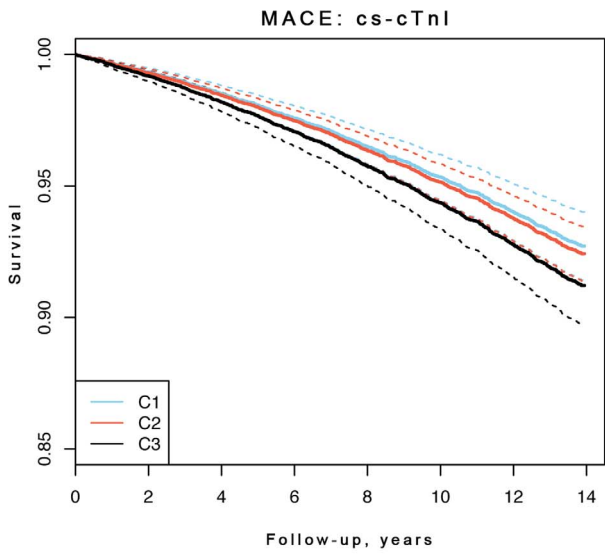


Figure 1. Kaplan-Meier Curves According to Troponin Categories as Measured by Contemporary-Sensitivity, High-Sensitivity and Super-Sensitivity Assays for MACE and HF after Adjustment for Age and Gender. Dotted lines indicate the 95% confidence intervals. MACE = major adverse cardiac events, cs-cTnI = troponin I measured by contemporary-sensitivity assay, hs-cTnI = highly sensitive troponin I measured by high-sensitivity assay, ss-cTnI = troponin I measured by super-sensitivity assay. Please see the footnote to Table 2 for the cut points of the troponin categories.

doi:10.1371/journal.pone.0090063.g001

values are log-transformed (instead of cubic root transformed) and the results are cross-validated in the same cohort (instead of a separate validation cohort).

Results

Baseline characteristics of the study sample

The FINRISK 1997 study enrolled 7,899 individuals (50.3% women and 49.7% men) after exclusion of those with prevalent MACE and pregnant women (Table 1). The mean age of included persons was 47.8 years. The mean baseline concentration of troponin was 3.9 pg/mL when measured with the contemporary-sensitivity assay, 3.0 pg/mL when measured with the high-sensitivity assay, and 2.8 pg/mL when measured with the super-sensitivity assay. Troponin values above the assay thresholds were observed in 26.4% for the contemporary-sensitivity assay, in

81.5% for the high-sensitivity assay, and in 93.9% for the super-sensitivity assay (Table 2). During the 14 years of follow-up 810 individuals died. All incident MACE accounted to 1,074, which included 299 ischemic strokes, 770 CVD events, and 505 incident heart failures. See Table 1 for further details of the baseline characteristics.

Association of troponin concentration measured by contemporary-sensitivity, high-sensitivity, and super-sensitivity assay with cardiovascular outcome

Figure 1 presents Kaplan-Meier estimates for MACE and HF, adjusted for age and sex, showing higher survival rates for the lowest troponin category of the supersensitive assay. In the Cox regression model, hazard ratios of the high-sensitivity and the super-sensitivity assays were significantly increased for incident MACE 1.12 [95% CI 1.05–1.19] and 1.18 [1.11–1.25], MI 1.17 [1.04–1.30] and 1.24 [1.11–1.39], and HF 1.19 [1.1–1.3] and 1.28 [1.18–1.39] for continuous values per 1-SD increase (Table 3 and Fig. 2). For strokes, only troponin assessed by the super-sensitive assay showed a significantly increased HR 1.14 [1.01–1.28]. No association was seen with all-cause death. Comparing the gender-specific HR, we observed similar values in both sexes (Table S1 in file S1). Both, C-reactive protein (CRP) and NT-proBNP, are well-established biomarkers for cardiovascular risk prediction. To control for these variables, we performed an additional adjustment for CRP and NT-proBNP. In this analysis HRs became weaker using the super-sensitivity assay, but were still significant: for MACE 1.11 [1.04–1.19], CVD 1.1 [1.02–1.19], MI 1.19 [CI 1.05–1.34], and HF 1.18 [1.08–1.29] (Table S3 in file S1). Troponin assessed by the high-sensitivity assay showed a significantly increased HR for MI 1.12 [CI 1.0–1.26], and HF 1.11 [1.01–1.21]. When considering categorical values, HRs were generally higher for the highest troponin category than the lowest, but a significantly increased HR was observed only for HF (high-sensitivity and super-sensitivity assay) and MACE (super-sensitivity assay) (Table S2 in file S1). The use of the contemporary-sensitivity and super-sensitivity troponin assays improved the discrimination beyond the Framingham Risk Model for CVD and MI (Table S3 in file S1). Troponin measurement using the high-sensitivity and super-sensitivity troponin assays improved discrimination for MACE and HF, while no significant improvement was seen for stroke and death.

Risk reclassification by determination of baseline troponin concentration

Net reclassification for the different events did not improve in the overall analysis (Table 4). Focusing on individuals with an intermediate 10-year risk (5–20%) according to the Framingham Risk Score, we determined the clinical NRI. The strongest clinical NRI for incident CVD was achieved with inclusion of troponin measured with the super-sensitivity assay followed by the troponin measured with the contemporary-sensitivity assay (3.46%, p = 0.009 and 2.30%, p = 0.026). Considering HF and MACE we observed a significantly improved reclassification (HF 10.23%, p < 0.001; MACE 5.1%, p < 0.001), when using the super-sensitivity troponin assay.

Table 3. Hazard Ratios from Cox Regression Models for Baseline Troponin Assessed by Contemporary-Sensitivity, High-Sensitivity and Super-Sensitivity Assays for Various Endpoints after Adjustment for the Framingham Risk Score.

Event	Troponin	Continuous		Categorical	
		HR (95% CI)	p value	HR (95% CI)	p value
MACE	cs-cTnI	1.07 (0.97–1.17)	ns	1.22 (0.95–1.57)	ns
	hs-cTnI	1.12 (1.05–1.19)	<0.001	1.24 (0.91–1.69)	ns
	ss-cTnI	1.18 (1.11–1.25)	<0.001	2.10 (1.21–3.63)	0.008
CVD	cs-cTnI	1.07 (0.96–1.20)	ns	1.20 (0.87–1.64)	ns
	hs-cTnI	1.09 (1.01–1.18)	0.032	1.08 (0.74–1.58)	ns
	ss-cTnI	1.15 (1.07–1.24)	<0.001	1.95 (0.97–3.93)	ns
MI	cs-cTnI	1.17 (0.10–1.39)	ns	1.52 (0.90–2.57)	ns
	hs-cTnI	1.17 (1.04–1.30)	0.006	1.11 (0.59–2.10)	ns
	ss-cTnI	1.24 (1.11–1.39)	<0.001	2.85 (0.69–11.68)	ns
HF	cs-cTnI	1.10 (0.96–1.26)	ns	1.31 (0.90–1.89)	ns
	hs-cTnI	1.19 (1.10–1.30)	<0.001	1.68 (1.04–2.72)	0.036
	ss-cTnI	1.28 (1.18–1.39)	<0.001	2.59 (1.15–5.82)	0.02
Stroke	cs-cTnI	1.04 (0.86–1.26)	ns	1.02 (0.63–1.65)	ns
	hs-cTnI	1.09 (0.96–1.23)	ns	0.99 (0.55–1.78)	ns
	ss-cTnI	1.14 (1.01–1.28)	0.032	1.97 (0.64–6.09)	ns
Death	cs-cTnI	1.03 (0.89–1.18)	ns	1.04 (0.73–1.47)	ns
	hs-cTnI	1.06 (0.98–1.14)	ns	1.40 (0.96–2.05)	ns
	ss-cTnI	1.06 (0.98–1.15)	ns	1.02 (0.64–1.64)	ns

Shown are the hazard ratios for continuous troponin concentration per 1-SD increment and for categorical troponin concentration, comparing the highest with the lowest defined category. Please see the footnote to Table 2 for cut points of the categories.

Abbreviations: MACE = major adverse cardiac events, CVD = cardiovascular disease, MI = myocardial infarction, HF = heart failure, HR = hazard ratio, CI = confidence interval, cs-cTnI = troponin I measured by contemporary-sensitivity assay, hs-cTnI = highly sensitive troponin, ss-cTnI = supersensitive troponin, ns = not significant.

doi:10.1371/journal.pone.0090063.t003

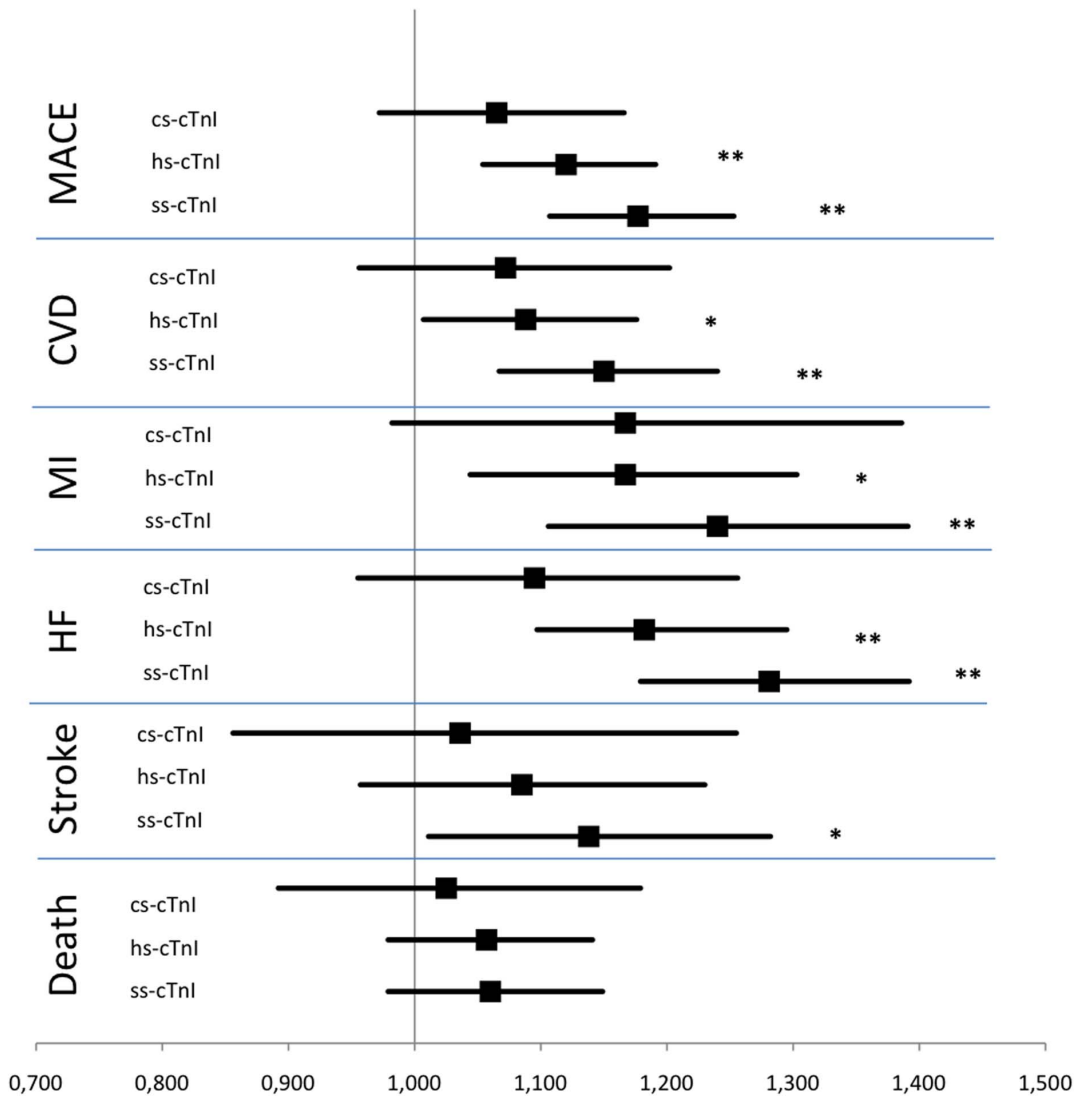


Figure 2. Hazard Ratios from Cox Regression Models for Baseline Troponin Assessed by Contemporary-Sensitivity, High-Sensitivity and Super-Sensitivity Assays for Various Endpoints after Adjustment for the Framingham Risk Score. **=p value<0.001, *=p value<0.05. MACE= major adverse cardiac events, CVD=cardiovascular disease, MI= myocardial infarction, HF= heart failure, HR= hazard ratio, CI= confidence interval, cs-cTnI= troponin I measured by contemporary-sensitivity assay, hs-cTnI= troponin I measured by high-sensitivity assay, ss-cTnI= troponin I measured by super-sensitivity assay. doi:10.1371/journal.pone.0090063.g002

Discussion

The use of more sensitive troponin assays has revealed a high potential for diagnosis of acute cardiac events, but also for identifying individuals at risk of a future cardiovascular event. This study compared the predictive power of baseline troponin concentrations in a population-based setting using three troponin assays of different sensitivity, ranging from a contemporary-sensitivity and high-sensitivity to a super-sensitivity assay, in individuals without a history of MACE. We observed a generally stronger association of troponin concentrations with MACE, CVD, MI, HF, and stroke, when the super-sensitivity assay was used compared to the high-sensitivity and contemporary-sensitivity assays. The associations remained significant after adjustment for the classical risk factors included in the Framingham equation, and additional adjustment for CRP and NT-proBNP for the endpoints MACE, CVD, MI, and HF. Net reclassification improvement was

not significant among all subjects. In subjects with intermediate risk, however, reclassification was significantly improved for various endpoints. The strongest clinical reclassification improvement was found with the super-sensitivity troponin assay for MACE and HF.

Previous studies have shown that troponin predicts cardiovascular events in the general population [8]. In the Dallas Heart Study, troponin T was detectable with a high-sensitivity assay in 25% of the general population and significantly associated with structural heart disease and mortality [8]. In older patients of the Cardiovascular Health Study, troponin T was measured by a high-sensitivity assay with a detection rate of 66%. Detectable troponin T concentrations were associated with incident HF and cardiovascular death [23]. In the Atherosclerosis Risk in Communities Study high-sensitivity assayed troponin T was also measurable in 66% of the study population and associated with CHD, mortality, and HF [24]. In contrast to these findings, detection rates in the present study were higher, since troponin I measured by the high-

Table 4. Net Reclassification Improvement (NRI) and Clinical NRI for Various Endpoints for Baseline Troponin Assessed by Contemporary-Sensitivity, High-Sensitivity and Super-Sensitivity Assays in Addition to the Standard Framingham Risk Score.

Event	Troponin	NRI	p value	Clinical NRI	p value
MACE	Cs-cTnl	0.22%	ns	1.86%	0.029
	hs-cTnl	-0.08%	ns	2.63%	0.016
	ss-cTnl	0.28%	ns	5.13%	<0.001
CVD	cs-cTnl	0.69%	ns	2.30%	0.026
	hs-cTnl	-0.14%	ns	1.70%	ns
	ss-cTnl	0.48%	ns	3.46%	0.009
MI	cs-cTnl	3.37%	ns	4.81%	ns
	hs-cTnl	2.90%	ns	3.95%	ns
	ss-cTnl	5.10%	ns	7.50%	ns
HF	cs-cTnl	1.03%	ns	2.19%	ns
	hs-cTnl	2.85%	ns	6.97%	0.004
	ss-cTnl	4.09%	ns	10.23%	<0.001
Stroke	cs-cTnl	0.02%	ns	0.27%	ns
	hs-cTnl	1.24%	ns	-0.04%	ns
	ss-cTnl	-0.80%	ns	-2.10%	ns
Death	cs-cTnl	0.09%	ns	0.70%	ns
	hs-cTnl	-0.40%	ns	0.02%	ns
	ss-cTnl	0.35%	ns	2.66%	0.023

NRI = net reclassification improvement, clinical NRI = NRI for individuals with an intermediate 10-year risk (5–20%) according to the Framingham Risk Score, MACE = major adverse cardiac events, CVD = cardiovascular disease, MI = myocardial infarction, HF = heart failure, cs-cTnl = troponin I measured by contemporary-sensitivity assay, hs-cTnl = troponin I measured by high-sensitivity assay, ss-cTnl = troponin I measured by super-sensitivity assay, ns = not significant.

doi:10.1371/journal.pone.0090063.t004

sensitivity and super-sensitivity assay was above the assay threshold in 82% and in 94% of individuals, respectively. In a recently published overview on 19 different troponin assays, the same high-sensitivity and super-sensitivity troponin I assays were used and showed even higher detection rates (96% and 100%, respectively) when using newer assays with lower LODs [25]. The same super-sensitivity assay was used in the Minnesota Heart Survey and showed a significant association with cardiovascular death [13]. These results are confirmed by our current findings with much larger material, and extended to include non-fatal endpoints. The troponin overview by Apple showed important differences in the 99th percentile according to gender with mostly higher concentrations in males. In our study median troponin concentrations measured by either the high-sensitivity or the super-sensitivity assay were higher in males. The measured HRs however did not differ significantly. Nevertheless gender-specific analysis should be considered for the interpretation of absolute troponin concentrations. Furthermore, recent results from the Scottish Heart Health Extended Cohort study suggested that the optimal (in terms of sensitivity and specificity) cutpoints of high-sensitivity troponin I differed between men and women [26]. The supersensitive troponin I was, however, not determined in the Scottish study. With the super-sensitivity troponin assay it is possible to measure very low troponin concentrations, reflecting minor myocardial processes without major ischemic damage. Therefore the use of super-sensitivity troponin assays apparently enables an improve-

ment of risk prediction in the general population, whereas its superiority in settings of acute coronary syndrome diagnosis needs to be further elucidated.

A particular strength of the present study is the comparison of three troponin assays with different sensitivities in risk prediction. However, various limitations merit consideration. First, measurements have been performed in frozen samples that were stored for 14 years at -70°C and had been thawed twice. Second – and most important – we do not have sufficient data at the moment to fully understand the clinical consequences of reclassification in those individuals reclassified from the intermediate risk group to the high-risk group. A recent report suggested medical intervention with statin therapy after such reclassification obtained using measurements of fibrinogen or CRP [27]. That paper demonstrated the potential of the approach but the reclassification with CRP or fibrinogen was relatively modest. The present study and our earlier work suggest that better reclassification can be obtained with troponin or by combining troponin with other biomarkers into a biomarker score [19]. It seems, however, that a randomized clinical trial would be needed to unequivocally demonstrate the benefits and risks of this approach. In contrast to our earlier work the contemporary-sensitivity assay was not able to predict outcome in the present study [19]. This is explained by the longer follow-up period, the larger number of CVD events and somewhat different modelling strategy. Nevertheless, the HRs of our earlier study and the present study are close to each other and the 95% CIs are widely overlapping. Finally, this study is limited to the Finnish population. Therefore, regional and especially ethnic differences of the measured biomarkers might have been missed.

Conclusion

Using a super-sensitivity assay, troponin I was detectable in almost all healthy individuals in this population-based setting. In terms of relative risk, troponin I was a significant predictor for future CVD events over and above the standard Framingham equation and remained significant even after further adjustment for CRP and NT-proBNP. In subjects at intermediate risk of CVD, the super-sensitivity troponin assay significantly improved reclassification for HF and MACE outcomes. Although both, the super-sensitivity and the high-sensitivity assays are predictors for incident CVD, application of the super-sensitivity assay might hold a slightly higher potential to reclassify the outcome.

Supporting Information

File S1 File containing Tables S1–S3. Table S1: Hazard Ratios from Cox Regression Models for Baseline Troponin Assessed by Contemporary-Sensitivity, High-Sensitivity and Super-Sensitivity Assays for Various Endpoints by Gender after Adjustment for the Framingham Risk Score. Table S2: Hazard Ratios from Cox Regression Models for Baseline Troponin Assessed by Contemporary-Sensitivity, High-Sensitivity and Super-Sensitivity Assays for Various Endpoints, after Adjustment for Framingham Risk Score, CRP and NT-proBNP. Table S3: C-Statistics and Integrated Discrimination Improvement for Baseline Troponin Assessed by Contemporary-Sensitivity, High-Sensitivity and Super-Sensitivity Assays for Various Endpoints after Adjustment for the Framingham Risk Score. (DOC)

Author Contributions

Conceived and designed the experiments: VS SB. Performed the experiments: PJ VS. Analyzed the data: JTN ASH TZ SA VS. Contributed reagents/materials/analysis tools: TZ. Wrote the paper: JTN ASH VS SB.

Critical revision of the manuscript: TK SN PJ KS. Contributed important intellectual input: TK SN PJ KS.

References

- Keller T, Zeller T, Ojeda F, Tzikas S, Lillpop L, et al. (2011) Serial changes in highly sensitive troponin I assay and early diagnosis of myocardial infarction. *JAMA* 306: 2684–2693.
- Keller T, Zeller T, Peetz D, Tzikas S, Roth A, et al. (2009) Sensitive troponin I assay in early diagnosis of acute myocardial infarction. *N Engl J Med* 361: 868–877.
- Haaf P, Drexler B, Reichlin T, Twerenbold R, Reiter M, et al. (2012) High-sensitivity cardiac troponin in the distinction of acute myocardial infarction from acute cardiac noncoronary artery disease. *Circulation* 126: 31–40.
- Graham I, Atar D, Borch-Johnsen K, Boysen G, Burell G, et al. (2007) European guidelines on cardiovascular disease prevention in clinical practice: executive summary. Fourth Joint Task Force of the European Society of Cardiology and other societies on cardiovascular disease prevention in clinical practice (constituted by representatives of nine societies and by invited experts). *Eur J Cardiovasc Prev Rehabil* 14 Suppl 2: E1–40.
- Thygesen K, Mair J, Mueller C, Huber K, Weber M, et al. (2011) Recommendations for the use of natriuretic peptides in acute cardiac care: A position statement from the Study Group on Biomarkers in Cardiology of the ESC Working Group on Acute Cardiac Care. *Eur Heart J*.
- Venge P, Johnston N, Lindahl B, James S (2009) Normal plasma levels of cardiac troponin I measured by the high-sensitivity cardiac troponin I access prototype assay and the impact on the diagnosis of myocardial ischemia. *J Am Coll Cardiol* 54: 1165–1172.
- Venge P, James S, Jansson L, Lindahl B (2009) Clinical performance of two highly sensitive cardiac troponin I assays. *Clin Chem* 55: 109–116.
- de Lemos JA, Drazner MH, Omland T, Ayers CR, Khera A, et al. (2010) Association of troponin T detected with a highly sensitive assay and cardiac structure and mortality risk in the general population. *JAMA* 304: 2503–2512.
- Omland T, de Lemos JA, Sabatine MS, Christophi CA, Rice MM, et al. (2009) A sensitive cardiac troponin T assay in stable coronary artery disease. *N Engl J Med* 361: 2538–2547.
- Kavsak PA, Xu L, Yusuf S, McQueen MJ (2011) High-sensitivity cardiac troponin I measurement for risk stratification in a stable high-risk population. *Clin Chem* 57: 1146–1153.
- Oluleye OW, Folsom AR, Nambi V, Lutsey PL, Ballantyne CM (2012) Troponin T, B-type natriuretic peptide, C-reactive protein, and cause-specific mortality. *Ann Epidemiol*.
- Wang TJ, Wollert KC, Larson MG, Coglianese E, McCabe EL, et al. (2012) Prognostic utility of novel biomarkers of cardiovascular stress: the Framingham Heart Study. *Circulation* 126: 1596–1604.
- Apple FS, Steffen LM, Pearce LA, Murakami MM, Luepker RV (2012) Increased cardiac troponin I as measured by a high-sensitivity assay is associated with high odds of cardiovascular death: the Minnesota Heart Survey. *Clin Chem* 58: 930–935.
- Pajunen P, Koukkunen H, Ketonen M, Jerkkola T, Immonen-Raiha P, et al. (2005) The validity of the Finnish Hospital Discharge Register and Causes of Death Register data on coronary heart disease. *Eur J Cardiovasc Prev Rehabil* 12: 132–137.
- Vartiainen E, Laatikainen T, Peltonen M, Juolevi A, Mannisto S, et al. (2010) Thirty-five-year trends in cardiovascular risk factors in Finland. *Int J Epidemiol* 39: 504–518.
- Mahonen M, Jula A, Harald K, Antikainen R, Tuomilehto J, et al. (2012) The validity of heart failure diagnoses obtained from administrative registers. *Eur J Prev Cardiol*.
- Todd J, Freese B, Lu A, Held D, Morey J, et al. (2007) Ultrasensitive flow-based immunoassays using single-molecule counting. *Clin Chem* 53: 1990–1995.
- D'Agostino RB, Sr., Vasan RS, Pencina MJ, Wolf PA, Cobain M, et al. (2008) General cardiovascular risk profile for use in primary care: the Framingham Heart Study. *Circulation* 117: 743–753.
- Blankenberg S, Zeller T, Saarela O, Havulinna AS, Kee F, et al. (2010) Contribution of 30 biomarkers to 10-year cardiovascular risk estimation in 2 population cohorts: the MONICA, risk, genetics, archiving, and monograph (MORGAM) biomarker project. *Circulation* 121: 2388–2397.
- van Buuren S, Groothuis-Oudshoorn K (2011) mice: Multivariate Imputation by Chained Equations in R. *Journal of Statistical Software* 45.
- Pencina MJ, D'Agostino RB Sr, D'Agostino RB Jr, Vasan RS (2008) Evaluating the added predictive ability of a new marker: from area under the ROC curve to reclassification and beyond. *Stat Med* 27: 157–172; discussion 207–112.
- Cook NR (2007) Use and misuse of the receiver operating characteristic curve in risk prediction. *Circulation* 115: 928–935.
- deFilippi CR, de Lemos JA, Christenson RH, Gottdiener JS, Kop WJ, et al. (2010) Association of serial measures of cardiac troponin T using a sensitive assay with incident heart failure and cardiovascular mortality in older adults. *JAMA* 304: 2494–2502.
- Saunders JT, Nambi V, de Lemos JA, Chambless LE, Virani SS, et al. (2010) Cardiac troponin T measured by a highly sensitive assay predicts coronary heart disease, heart failure, and mortality in the Atherosclerosis Risk in Communities Study. *Circulation* 123: 1367–1376.
- Apple FS, Ler R, Murakami MM (2012) Determination of 19 cardiac troponin I and T assay 99th percentile values from a common presumably healthy population. *Clin Chem* 58: 1574–1581.
- Zeller T, Tunstall-Pedoe H, Saarela O, Ojeda F, Schnabel RB, et al. (2013) High population prevalence of cardiac troponin I measured by a high-sensitivity assay and cardiovascular risk estimation: the MORGAM Biomarker Project Scottish Cohort. *Eur Heart J*.
- Kaptoge S, Di Angelantonio E, Pennells L, Wood AM, White IR, et al. (2012) C-reactive protein, fibrinogen, and cardiovascular disease prediction. *N Engl J Med* 367: 1310–1320.